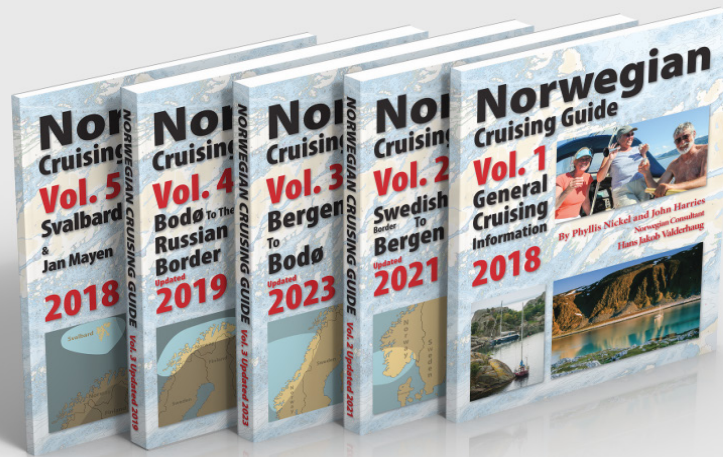


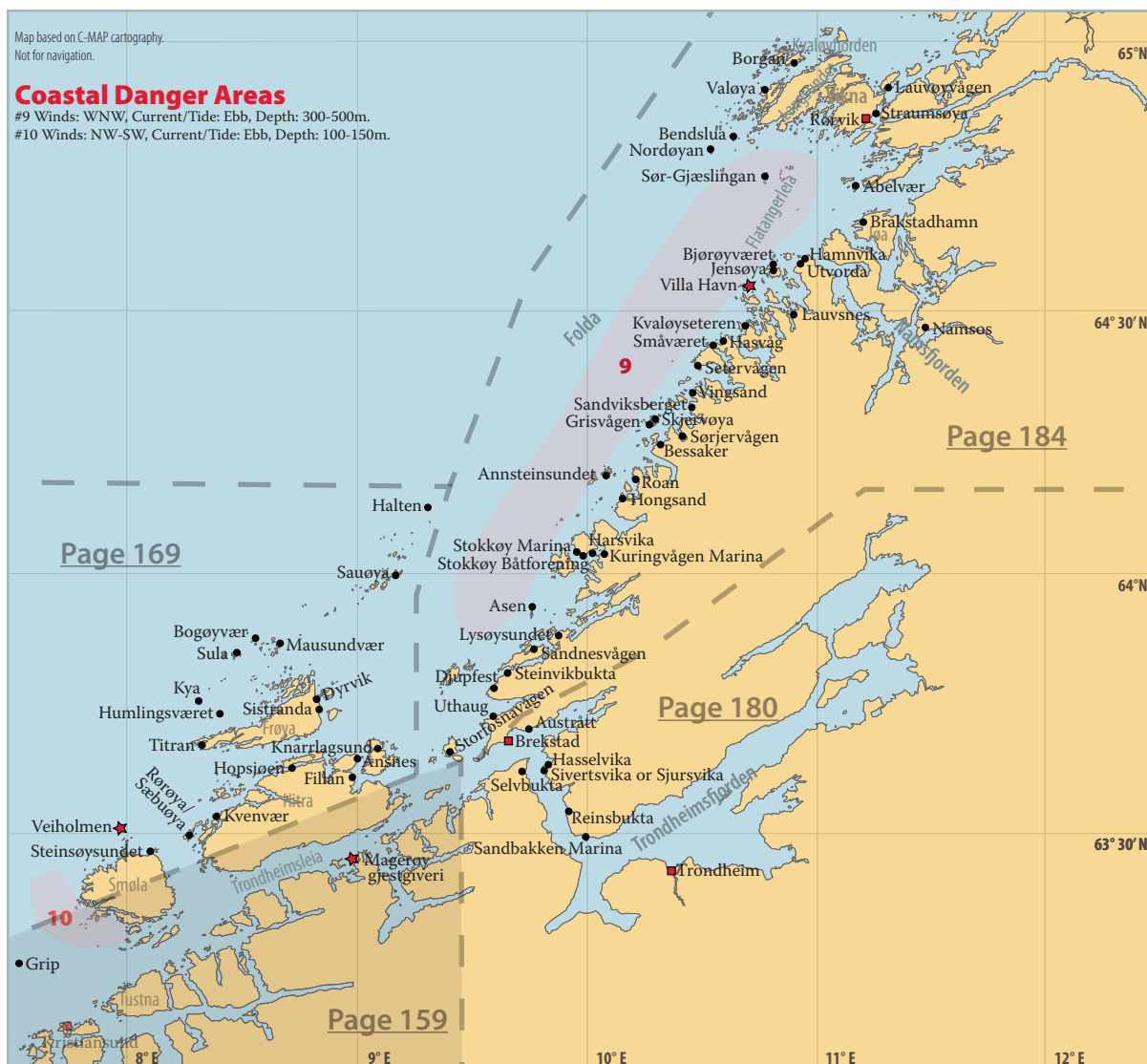
Norwegian Cruising Guide



Sample Chapter

www.norwegiancruisingguide.com

Kristiansund to Rørvik



Den Norske Los

(scroll down for PDF)

Vol. 4

Most sailors pass through this area quite quickly, as they are in transit to Lofoten, Nordkapp or Svalbard; however, if you are lucky enough to have some time to spend here, there are many possibilities for more interesting and scenic routes than just following the main lead (Trondheimsleia). Below are two alternatives to the Trondheimsleia just E of Kristiansund:

- Sailing via Årsundfjorden, Auresundet, Torsetsundet and Dromnessundet before re-joining Trondheimsleia, provides a beautiful detour. There is an 18 m high bridge just after you leave Kristiansund turning S and then E and there is a 16 m high bridge in Torsetsundet, with shoal depth except under the small light on the bridge. There is another 16 m high bridge in Dromnessundet and one in Auresundet. Alternatives for an earlier exit from the detour are at Soleimsundet, which requires passing under another 18 m high bridge and two overhead cables at 21 m clearance, or at Imarsundet, which has a new 12 m high bridge. There are several anchorages and quays along the route.



- Another option is to explore the large islands of Smøla, Hitra and Frøya. The chart looks very intimidating with its large expanses of blue indicating depths less than 10 m in amongst innumerable skerries, but there are many well-marked channels that are easily navigated in reasonable weather. There are also many secure harbours, often with tiny fishing villages existing in an edge-of-the-world atmosphere. The harbour at Halten Lighthouse is the outermost point in this area.

Memorial at Titran for the 140 fishermen lost in the gale of October 1899.



© Hans Jakob Valderhaug



© Hans Jakob Valderhaug

Kjeungskjær Lighthouse in the approaches to Uthaug, looking south.

Like the inshore passage past Hustadvika (see “Sognefjorden to Kristiansund”), there is a partly inshore route past Folda, the exposed stretch of water between Buholmråsa Light (northwest of Småværet) and Grinna Lighthouse (northeast of Sør-Gjæslingan), called Flatangerleia. In settled conditions this provides a scenic and interesting alternative to the open-water route; however, it does require good passage planning and careful pilotage. This beautiful inside route has several variations marked on the chart, winding among many small islands and skerries with anchor-



Keeping watch over the inner harbour at Småværet, with the council dock in the background, looking west.

Right: WWII installations at Utvorda Festning (fort), looking over the north approaches to Flatangerleia.



Nidarosdomen Cathedral, one of many sites worth visiting in Trondheim.

ing possibilities. *Den Norske Los*, Vol. 4, offers large-scale sketch charts of this area, which are useful although not absolutely necessary, many of which you will find below.

Once north of Folda you have the large Vikna archipelago ahead of you. At this point you can either take the main channel to Rørvik (the shortest route); an intermediate channel called Langsundet that runs between Mellomvikna and Ytrevikna and back to the main channel, bypassing Rørvik (note the bridge with an overhead clearance of 18 m); or the beautiful and intricate outermost channel, which starts northeast of Nordøyen, passes the harbours of Valøya and Borgann, and ends at Kvaløysfjorden, which runs to the south of Raudøya and Kvaløya and back to the main channel, north of Rørvik. This outer channel requires nerves of steel and local knowledge if possible.

Landfalls and Favourites: Trondheim and Brekstad are Ports of Entry, which are accessed by approaching Trondheimsfjorden north of Fuglen and Kvitholmen Lighthouses. Rørvik, another Port of Entry, is approached from the southwest, passing south and east of Grinna Lighthouse and then up Nærøysundet.

In Trondheimsleia, our favourite stop is at Magerøy gjestgiveri, which offers both well-protected pontoons and a carefully



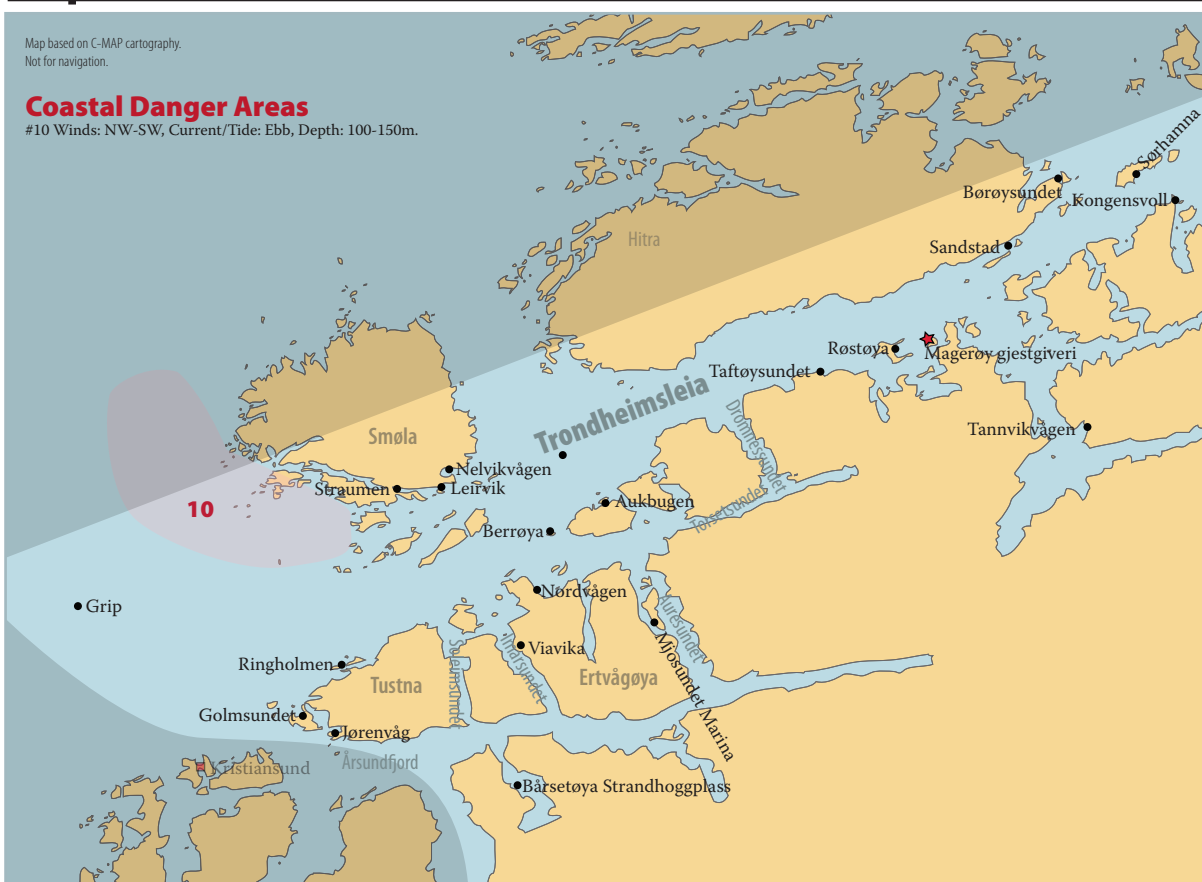
restored trading post with pub. On the outer route, Veiholmen is a true hurricane hole offering end-of-the-world scenery. Further north, the small villages in Flatangerleia are intriguing, with the anchorage at Villa Havn being our personal favourite for the scenery and frequent sighting of eagles.

Tides and Tidal Streams: The greatest spring tides in the area are 2 to 2.5 m. HW at Kristiansund is 25 minutes after Bergen and HW at Rørvik is 55 minutes after Bergen. Tidal streams are moderate except in a few constricted passages, with the direction depending on local topography.

Chapter Organization: See **Kristiansund** at the end of the previous chapter.



Grip to Sørhamna



Grip

63°13.12' N, 07°35.65' E

Last Updated: 2016

[Google](#)

DNL, Vol. 4, aerial photo

[Website](#)

Right: S/V *Anna* moored at the shuttle boat docks at Grip, looking north.

Grip is an offshore fishing village with the old fishermen's lodgings nicely restored as holiday homes. There were 200 inhabitants as recently as the 1960s and, although there are no longer any permanent residents, the small community thrives in the summer months.



Note that the harbour behind the mole N on Grip is not suitable for sailboats.

Approaches: From the S, pass W of the *varde* on Inngripan, then N as charted until E of the light and perch on Grøningen. Turn NW towards the mole, passing between the mole head to starboard and the perch to port.

Anchorage, Moorings: This small mole harbour now has a dedicated visitors' pontoon, which is, however, not really suitable for larger boats. Larger boats may wish to moor alongside a fishing boat with permission or



Grip Lighthouse, looking west.

else use the express boat dock when it is free. Note that the express boat dock is also in use by vessels carrying goods to the island and you should not leave your boat unattended.

S/V Anna moored at the visitors' pontoon, looking southeast. Note the lines to the main dock as the pontoon is not built for larger boats.



© Hans Jakob Valderhaug

An alternative is to leave your boat in **Kristiansund** and take the shuttle boat to Grip.

Things To Do: There is a *café* open in the season. There are lovely walks between the old wooden buildings. The stave church dates back to the 1400s; extensive restoration work was done in 2008 and 2016.

Straumen (S Smøla)

63°19.7' N, 08°04.9' E

Last Updated: 2016

[Google](#)

DNL, Vol. 4, aerial photo

The SW side of Smøla is a General Animal Protection area.

Approaches: Approach from the S is limited by the 16 m high bridge between Edøy and Kuli.

The pontoons at Straumen, looking southeast. Visitors moor on the T-head.



© Hans Jakob Valderhaug

Anchorage, Moorings: This is a sheltered harbour, with visitors' berths alongside the outer pontoon.

Looking southwest over Kyrhaug Lighthouse at the south end of Trondheimsleia, 4 nm southeast of Straumen and Leirvik.

Leirvik (S Smøla)

63°20.2' N, 08°07.3' E

Last Updated: 2016

[Google](#)

For The Boat: Fuel is available. Electricity and water are available on the pontoon. Mechanical repairs are carried out.

For The Crew: There is a shop with post-in-shop and a health centre.



This is a sheltered anchorage in beautiful surroundings.

Approaches: Approach from the E, following the Smøla shore from Gjernesskjæret light.

The anchorage at Leirvik looking south with the hills of Tustna in the background.



Anchorages, Moorings: Anchor in the bight between the NW tip of Vikkjelsøya and Hestøya, in 6 to 7 m depth in mud with good holding.

Nelvikvågen (SE Smøla)

63°21' N, 08°10' E

Last Updated: 2022

[Google](#)

This harbour makes for a sheltered overnight stop. No facilities.

Anchorages, Moorings: Smaller boats may wish to enquire about a vacant berth in the old pontoon system. If no one is about, try one of the posted telephone numbers.

Most boats will prefer to anchor in the charted anchorage NW in the bay in 10 to 15 m depth, with good holding in mud.



The floating pontoon berths at Nelvikvågen.



The anchorage in Nelvikvågen, looking northwest.

The tempting cove to the SW shallows rapidly behind the small island (Storholmen). Storholmen is part of the nature reserve around Storrågen, a shallow basin that fills with salt water at high tide only. The basin with brackish water constitutes a unique ecosystem and is an important feeding and nesting ground for many species of birds.



Ringholmen

63°12.2' N, 07°57.6' E

Last Updated: 2022

[Google](#)

DNL, Vol. 4, aerial photo

[Website](#)

The old fishing centre at Ringholmen.

The old fishing centre on the small island of Ringholmen has been nicely restored with cabins for rent and a restaurant. It is a popular location for special events such as weddings.

Approaches: You can approach from the N from Ytrefjorden, or in settled weather from SW through the narrow passageway through the skerries, as charted.



The visitors' pontoon for shallow draft vessels at Ringholmen, looking north.

Anchorage, Moorings: Shallow draft vessels (charted depth 1.4 m) can moor at the pontoon system in the inner harbour in excellent shelter; follow the sign to "Lagunen". There is also a deep-water pontoon N of the buildings; however, this pontoon is rough and exposed to the N and to wash from passing boats. Probably best suited for a day time visit.



The deep-water visitors' pontoon at Ringholmen, looking northeast.





For The Crew: There are toilets in the restaurant when it is open.

Things To Do: The restaurant is open during peak season (see the website for opening hours).



Golmsundet

63°10' N, 07°54.4' E

Last Updated: 2022

[Google](#)

Looking southeast over the anchorage at Golmsundet.

This anchorage in the sound between Golma and Bjørnskotøya offers good protection. The W part of the anchorage is overlooked by a few buildings.



© Hans Jakob Valderhaug

Approaches: From the N, passing W or E of Bjørnskotøya.

Anchorage, Moorings: Anchor in 9 to 10 m depth E in the sound between the islands. There is good holding in mud.

Jørenvåg (Ytre Kråkøya/Tustna)

63°08.7' N, 07°58.2' E

Last Updated: 2008

[Google](#)

Looking southwest over S/V Drott
// anchored at Jørenvåg.

Anchorage, Moorings: Anchor between Ytre Kråkøya and Tustna in 12 m depth. There are mooring bolts on the northeast side of Ytre Kråkøya.



© Berit and Jarle Land



Bårsetøya Strandhoggplass (Skålvikfjorden)

63°06.45' N, 08°16.5' E

Last Updated: 1996

[Google](#)

[Website](#)

The likelihood of balmy inland weather makes this a favourite weekend rendezvous for sailors from **Kristiansund**.

Anchorage, Moorings: There are several pontoons in this bight on the SW side of Bårsetøya.

Things To Do: There is a BBQ, children's play area, and many berries in season.

Viavika (W Ertvågøya)

63°12.65' N, 08°16.8' E

Last Updated: 2011

[Google](#)

This anchorage is located in beautiful surroundings with views of the almost 1000 m high hills in the vicinity. There are a few cabins and an old farm at the bottom of the bay.

Approaches: The approach from the N is limited by 12 m and 17 m high bridges. Sailboats with greater air draft will therefore have to approach from the S.

Anchorage, Moorings: Anchor behind Viavikholmen in 6 to 8 m depth.

The holding is good in sand. There are mooring bolts on the W side of the shallow bay. Note that one contributor reports dragging here due to seaweed when anchoring in deeper water than the area shown in the photograph.



Looking southwest over the stunning anchorage at Viavika.

Things To Do: The new small cabin with a boat shed on the small headland W of the anchorage is Imarbu, a recent supplement to the almost 400 cabins managed by Den Norske Turistforening (the Norwegian Trekking Association). The cabin is linked by marked paths to other cabins along the *fjorderuta* (coastal path). At Imarbu there is a kitchen with supplies, several wood stoves and bunks for hikers. Have a look in the boat shed at the two *geitbåter* (traditional clinker-built rowing boats).

Nordvågen (N Ertvågøya)

63°15.4' N, 08°19.3' E

Last Updated: 2007

[Google](#)

Anchorage, Moorings: Anchor in 14 m depth in the centre of the pool at the head of the cove. The bottom is a mix of sand and mud with good holding. The anchorage is exposed to the NE with otherwise all-round protection. Severe gusting can occur here in strong W winds.



Mjosundet Marina

63°13.6' N, 08°30.3' E

Last Updated: 2012

[Google](#)

DNL, Vol. 4, aerial photo

Looking west over the pontoons at Mjosundet Marina.

As you approach Mjosundet, you may be put off by the heavy shipbuilding nearby, but once you are berthed it does not seem to intrude.



Approaches: The approach from the N through Mjosundet is via a bridge with 28 m clearance. The approach from the SE from Aursundet is via a tiny lead with a depth of 2.5 m. The approach to Aursundet from the N is limited by a 16 m bridge, while the passage from Aursundet through Oldervika is not feasible for sailing boats due to the 8 m bridge.

Anchorage, Moorings: A large pontoon system is available in well-sheltered attractive surroundings.

For The Boat: Electricity, water and fuel are available.

For The Crew: There is a new service building and a shop.

Things To Do: There is a seasonal pub. Lurvika, a few nm NE, is an old trading post harbour in the process of being restored. They have a visitors' pontoon.

Berrøya

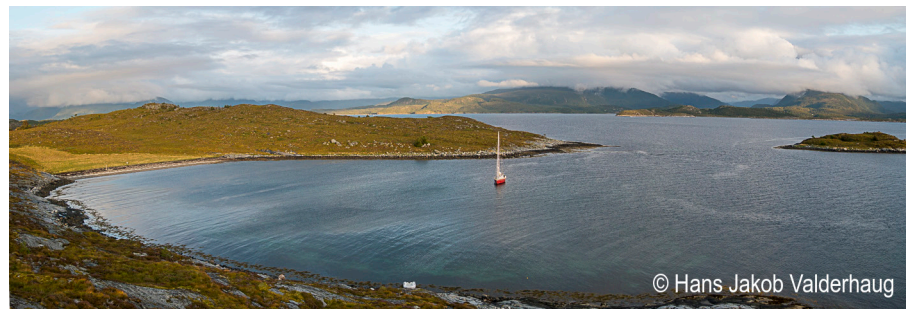
63°18.1' N, 08°19.5' E

Last Updated: 2022

[Google](#)

The anchorage at Berrøya, looking southeast.

This is a useful pitstop in settled weather.



Anchorage, Moorings: Anchor in 4 to 5 m depth SW of the island, where there is good holding in sand/mud with some rocks.

Aukbugen (N Grisvågøya)

63°19.8' N, 08°25.9' E

Last Updated: 2013

[Google](#)

This charted anchorage lies 3 nm NE of **Berrøya**.

Anchorage, Moorings: It is possible to anchor in the outer harbour with good shelter except from the N.



Our contributor reports that they do not recommend the inner harbour due to lines and debris on the bottom that fouled their anchor.

Taftøysundet

63°25.72' N, 08°48.5' E

Last Updated: 2016

[Google](#)

Anchorage, Moorings: This is a good anchorage with swinging room in 6 to 10 m depth in sand. Alternatively, there is a small mole harbour with pontoons S in the bay by Sørвика.

Anchorage at Taftøysundet, looking west.



© Hans Jakob Valderhaug

Røstøya (E)

63°26.6' N, 08°55.7' E

Last Updated: 2016

[Google](#)

This is a beautiful wild anchorage and a good passage stop on the E side of Røstøya. Though the island is a nature reserve to protect the coniferous forest, there is free access year-round. It is a popular recreation area that sees many daytrippers. Soløya to the SW is, however, a bird sanctuary with limited access.

S/V *Anna* anchored west of Valholmen at Røstøya, looking northeast.

Anchorage, Moorings: Anchor in 10 m depth in the small bay W of Valholmen and SW of Åmholmen. It is also possible to anchor S of Valholmen in 10 to 20 m depth on a hard sand bottom with rocks. Alternatively, there is a pontoon in 3 m depth in the small bay, SE on Røstøya, SW of the small island Svelungen.



© Hans Jakob Valderhaug

Magerøy gjestgiveri (E Magerøya)

63°27' N, 08°59.4' E

Last Updated: 2016

[Google](#)

[Website](#)

Magerøya was an old trading post centrally located in Trondheimsleia. The old wooden building was used as lodgings and as a watering hole for sailors starting in 1687. The buildings are now owned by Hamnes municipality. Magerøya is a nature reserve.

Approaches: All hazards are charted and well marked.

Anchorage, Moorings: This is a small pontoon complex located outside large old wooden buildings. You can moor alongside the outermost pontoon or at a vacant fingerberth.



Looking west at the quays and pontoons at Magerøy gjestgiveri. The pontoon layout has changed somewhat since this photo was taken.

For The Boat: There is electricity (for an extra charge) at the shore end of the pontoons.

For The Crew: There are toilets and showers (for a fee) in the guesthouse.

Things To Do: There is a pub and restaurant in the old trading post and rooms for rent. There is a small maritime museum and a footpath around the island.

Tannvikvågen (Hemnefjorden)

63°23.3' N, 09°14' E

Last Updated: 1996

[Google](#)

Anchorage, Moorings: Anchor in attractive surroundings just before the overhead cable.

Things To Do: There is nice walking by the lakes to the NE.

Sandstad (SE Hitra)

63°31.41' N, 09°06.6' E

Last Updated: 2006

[Google](#)

Though the chart shows this area as drying out, dredging for a small boatclub has created enough depth for anchoring just outside the channel.



Looking north over Terningen Lighthouse, halfway up Trondheimsleia, 2.5 nm southwest of Sandstad.

Anchorage, Moorings: There is a small boatclub at the W end of the buoyed channel but the pontoon fingers are too short for a 39' boat. It is possible to anchor at the W end of the channel just before the pontoons in 3 m depth in good holding and shelter.

For The Crew: There are toilet facilities at the boatclub. There is a large campground on Hitra but there is no shop there.



Børøysundet (SE Hitra)

63°34.3' N, 09°11.7' E

Last Updated: 2022

[Google](#)

[Website](#)

Børøysundet, looking southeast, with the red sailboat moored at the visitors' pontoon.

Anchorage, Moorings: Visitors moor at the pontoon system off the restaurant and fuel pump. Large boats can be accommodated.



© Hans Jakob Valderhaug

For The Boat: Water, electricity and fuel are available.

For The Crew: There are pay toilets and showers, and laundry facilities. Shops are about 5 km from the docks.

Things To Do: There is a nice restaurant at the marina.

Kongensvoll

63°33.1' N, 09°24' E

Last Updated: 2023

[Google](#)

Looking west over Kongensvoll marina with S/V Anna alongside the visitors' pontoon.

This is a useful passage harbour offering all-weather protection.

Approaches: Approach from the N between Hundneset and Åsøya; the charted shallows are marked with perches with red/green reflective tape and/or pointers. In strong onshore winds or poor visibility pass E of Åsøya and go around the island to the harbour basin, passing under the 20 m overhead cable.



© Hans Jakob Valderhaug

Anchorage, Moorings: The best shelter is found at the visitors' pontoon inside the mole. In settled weather visitors also moor alongside the outer



The signposted walks at Kongensvoll. Note that the sign to Isvarden appears underway.

The view from Isvarden, accessed from Kongensvoll, looking northwest, with Sørleksa and Hitra in the distance.

wavebreaker. Alternatively, anchor in 6 to 8 m depth in sand, clear of the moorings, derelict pontoons, and the charted submarine cable.

For The Boat: There is electricity and water on the pontoon. The yard will lift boats < 10 tonnes, but are not set up to lift boats with masts.

For The Crew: There are showers and laundry facilities at the campground.

Things To Do: There is a seasonal *café*.

A short walk on a gravel road to Hundneset gives good views of the approach to Trondheimsfjorden. For a longer walk, and better view, take the path to Isvarden, named Storhammaren on official maps (alt 125 m). The path begins behind the red workshop. If you have the time, the return from Isvarden can be done as a circular walk taking you down to the gravel road at Bystingen. The path goes through somewhat boggy terrain.



Sørhamna (S Sørleksa)

63°34.2' N, 09°19.6' E

Last Updated: 1996

[Google](#)

[Website](#)

This is a tiny, well-sheltered, peaceful, and very attractive mole harbour, E of Hitra.

Approaches: The entrance is well hidden until you are very close.

Anchorage, Moorings: The first quay is for the ferry and so you should use the second quay, or possibly the quay to starboard of the ferry quay, or tie to a fishing boat. The pontoons are too small for a sailboat.

Den Norske Los reports that it is possible to anchor either N or E of the small island (Hamneholmen). There are mooring bolts on the island.

Veiholmen to Halten

Veiholmen

63°31.15' N, 07°57.3' E

Last Updated: 2022

[Google](#)

DNL, Vol. 4, aerial photo

Veiholmen is a well-protected harbour surrounded by old buildings.

Approaches: From offshore, the lighthouse on Hauggjegla and the many windmills on Smøla are conspicuous. The passageways to Veiholmen from the SW and NE are narrow but extremely well marked with perches with pointers. We would not recommend using the NE approach in a strong onshore wind.

Once inside the outer harbour, the guest harbour remains invisible and unmarked. To enter the inner harbour turn 90° to the S and then, at an ap-

Right: The torturous but well-marked approach to Veiholmen from the northeast (Sildsundet), looking northeast.



Above: Hauggjegla Lighthouse, north in the approaches to Veiholmen.

Right: Looking northeast over S/V Anna moored at the visitors' pontoon (Vågarbrygga) in Veiholmen. The municipal dock is just aft of S/V Anna but out of the picture.

parent deadend, turn sharply to starboard into a spacious and wonderfully protected area.

Anchorage, Moorings: The visitors' pontoon is to port when you enter the inner harbour and marked "Vågarbrygga" and "Gjestebrygge". Depths > 2 m. There is a short municipal dock (*almenningskai*) less suited for larger vessels.



For The Boat: Water and electricity are available.

For The Crew: There are showers and laundry facilities, enquire at the grocery store.



Things To Do: Veiholmen is at the end of the impressive island-hopping road which makes an interesting walk or bike (there are bicycles for rent). Frequent bus service can bring you back, or even enable a daytrip from **Kristiansund**. There are also two restaurants and a pub if you are hungry and thirsty after your trek.

Steinsøysundet (NE Smøla)

63°28' N, 08°06.27' E

Last Updated: 2011

[Google](#)

Looking northeast at M/V Bran alongside the pontoon at Steinsøysundet.

Anchorage, Moorings: There is a small floating pontoon that may have room for visiting boats.

For The Crew: There is a Coop grocery store in the village.





Rørøya/Sæbuøya

63°29.9' N, 08°16.2' E

Last Updated: 1996

[Google](#)

Note that the overhead cables just N, charted as 14 and 11 m high, are actually both 11 m high.

Anchorage, Moorings: The sound between these two islands offers several sheltered anchoring places; one especially recommended is in the mouth of the first cove to the W after entry from the S, between the two small quays. There are several quays where you might berth with permission.

Kvenvær (W Hitra)

63°32.05' N, 08°23.35' E

Last Updated: 2015

[Google](#)

DNL, Vol. 4, aerial photo

Located in the lead between Hitra and Store Helsøya, Kvenvær is a sheltered mole-protected fishing harbour.

Anchorage, Moorings: Tie up alongside the floating pontoon. Note that it can be uncomfortable here due to wash from passing boats and in NE and SW winds.

For The Boat: Electricity and water are available on the pontoon. There is a chandlery.

For The Crew: There is a grocery store.

Things To Do: There is a very nice pub and restaurant.

Hopsjøen (N Hitra)

63°37.75' N, 08°43.2' E

Last Updated: 2011

[Google](#)

[Website](#)

Hopsjøen once operated an enforced monopoly controlling all trade between Lofoten and **Bergen**.

Anchorage, Moorings: Located in the narrow lead between Hitra and Dolmøya, this is an attractive sheltered harbour with 2 floating pontoons. 300 m E is a marina with an 80 m long floating pontoon with guest spaces.

Looking south over the docks at Hopsjøen.





For The Boat: There is a 16 m high bridge 1.5 nm to the E, and .5 nm E of the bridge lies the shipbuilding centre Kvernhusvika, with a pontoon and fuel.

For The Crew: There is a Coop grocery store 1 km E.

Things To Do: There is a hotel and restaurant and the historic old shop is a museum.

Fillan (E Hitra)

63°36.51' N, 08°58.8' E

Last Updated: 2011

[Google](#)

DNL, Vol. 4, aerial photo

The guest pontoon furthest to the north in Fillan, looking north/northwest.

Anchorage, Moorings: Visiting boats can tie up in 3 places, all with at least 2 m depth:

- There is a marina for small boats sheltered by a mole, with a 60 m long pontoon with room for visitors to moor on the outside of the pontoon with good shelter.
- N of this, in front of a big red building, is a 50 m long pontoon with visitors' berths on both sides.
- Continuing to the N, you can see the ferry quay and further N of this is a smaller pontoon of about 15 to 20 m length, which has visitors' berths as well.



For The Boat: Water and electricity are available on the long pontoon.

For The Crew: There is a grocery store in the town, which is about 1.5 km from the docks.

Things To Do: There is a coastal museum 500 m from the docks and an old wooden church that's worth a visit.

Ansnes (NE Hitra)

63°38.3' N, 08°59.8' E

Last Updated: 1996

[Google](#)

Anchorage, Moorings: This is a mole harbour, just SW of a 16 m high bridge.

For The Boat: Fuel is available.

For The Crew: There is a shop.

Knarrlagsund (Knarren Brygge)

63°39.75' N, 09°05' E

Last Updated: 2023

[Google](#)

[Website](#)

Anchorage, Moorings: Knarrlagsund lies in the narrow lead between Fjellværsøya and Ulvøya, just W of a 17 m high bridge. There are pontoons on both sides, public to the N and private to the S.

For The Boat: Electricity is available on the pontoons. Skarsvåg boatyard is located 2 nm WSW. They build boats, mostly in aluminum. They have a

travelift (35 tonnes, max beam 5 m). They will winter boats and one contributor reports that they are very helpful. While having only limited experience with sailing yachts, they cooperate with Trondheim-based Riggmaster AS when un-stepping masts.

Looking east over the public pontoons at Knarrlagsund.



For The Crew: There is a shop. There is a bus to **Fillan** (upon request), a corresponding bus to **Sandstad**, and an express boat to **Trondheim**.

Titran (SW Frøya)

63°40.05' N, 08°19' E

Last Updated: 2022

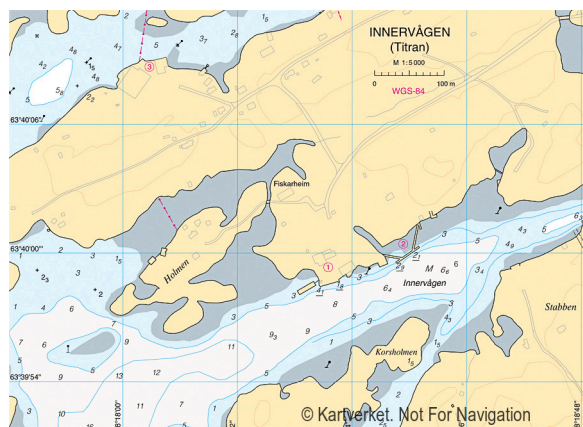
[Google](#)

DNL, Vol. 4, aerial photo & sketch map

[Website](#)

Titran is a small community with 70 to 80 year-round inhabitants.

Approaches: From offshore, Slettringen Lighthouse, 1.5 nm W of Titran, is conspicuous. Pass E of Sandholmen into Innervågen.



Anchorage, Moorings: There is a visitors' pontoon in Innervågen, outside the red building marked "Gaustadbrygga" (#1 on the sketch map). Depths are > 2 m on the outside; the inside is shallow. A fee is asked. The dock and pontoon further in are for fishing boats only.



Looking north over Slettringen Lighthouse.

Titran visitors' pontoon, looking east.



For The Crew: There is a service building.

Things To Do: A guide is available for the WWII fort. A monument memorializes the 140 fishermen lost on the night of 13/14 October 1899. 100 of the fishermen came from Titran alone, which then had a population of around 600. The Fisherman's Mission (Fiskarheimen) offers accommodation and there is a pleasant *café*/pub on the docks.

Humlingsværet

63°45.4' N, 08°24.2' E

Last Updated: 1996

[Google](#)

This is a sheltered abandoned harbour.

Anchorage, Moorings: Anchor with lines ashore.

Kya

63°46.4' N, 08°18.8' E

Last Updated: 2022

[Google](#)

DNL, Vol. 4, aerial photo

The buildings of this abandoned fishing village burned down in 1978. Some of the buildings have been rebuilt by the new owner and are used as summer cabins.

Note that Kya is a fair-weather harbour only and should be avoided in strong winds. Also, since it is not included in the express boat routes that serve many of the neighbouring islands, Kya has not benefited from the new navigation markers that are seen in other parts of the archipelago.



Looking northwest over a sailboat alongside the private dock at Kya.

Approaches: Approach from the SE and aim for Littlelskjæret Light. Pass S of the light, keeping N of the perch with a pointer. From this point make a slow U-turn, passing W of the perch without a pointer and into the mole harbour.

The owner of Kya reassured Eli that this large cauldron was used in the past for cooking blubber for lights, not for supplementing the island diet with visiting sailors.

Anchorage, Moorings: There is one private wooden pier with depth alongside of > 3 m. Enquire with the owner if present. There are also some private moorings. There are many mooring rings around the basin, especially along the N wall with depths of 1 to 2 m alongside and ladders.





Things To Do: Enjoy the “end-of-the-world” atmosphere.

Sistranda (E Frøya)

63°44.15' N, 08°50.2' E

Last Updated: 2022

[Google](#)

DNL, Vol. 4, aerial photo & sketch map

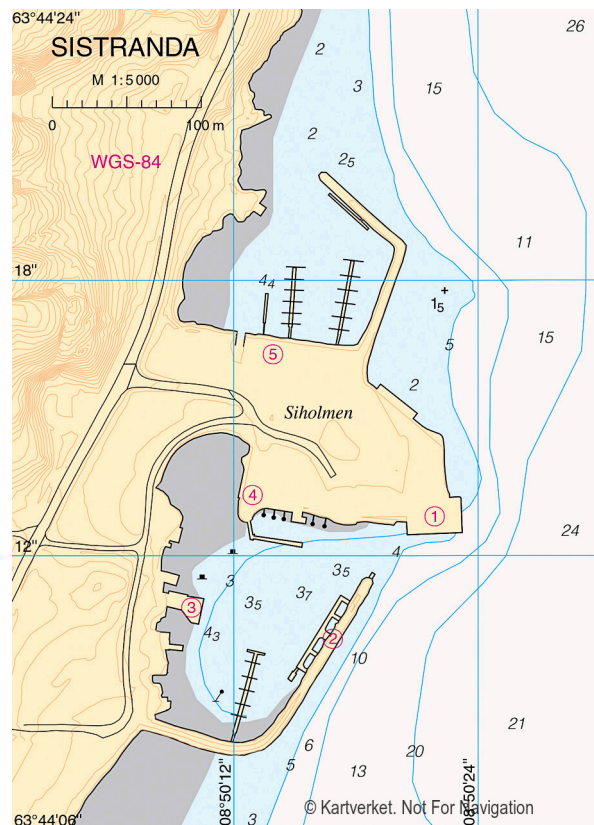
The waters just E of Frøya are somewhat sheltered by Inntian and Uttian, and in the right weather this can be a pleasant sailing area.

Anchorage, Moorings: Sistranda has 2 small mole harbours with pontoons and quays. The N mole harbour has a dedicated visitors' pontoon.

For The Boat: There is water and electricity on the visitors' pontoon. Fuel is available.

For The Crew: There is a post-in-shop, bank, hotel and dentist and a facilities building.

Things To Do: There is a museum.



Dyrvik (E Frøya)

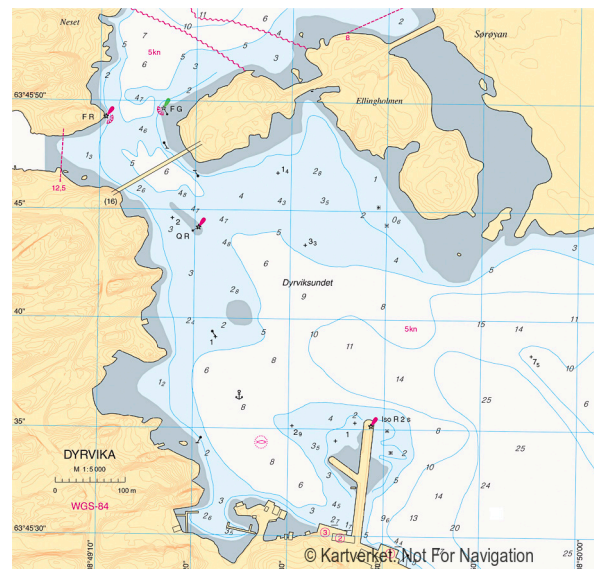
63°45.6' N, 08°49.5' E

Last Updated: 2022

[Google](#)

DNL, Vol. 4, aerial photo & sketch map

Anchorage, Moorings: Dyrvik is a small mole harbour with quays and anchorage, just S of a 16 m high bridge. There are new pontoons at Dyrvik Marina. Visitors are allotted berths on the outside of the wave breaker, which are exposed in Nly winds.



Sula

63°50.7' N, 08°27.8' E

Last Updated: 2022

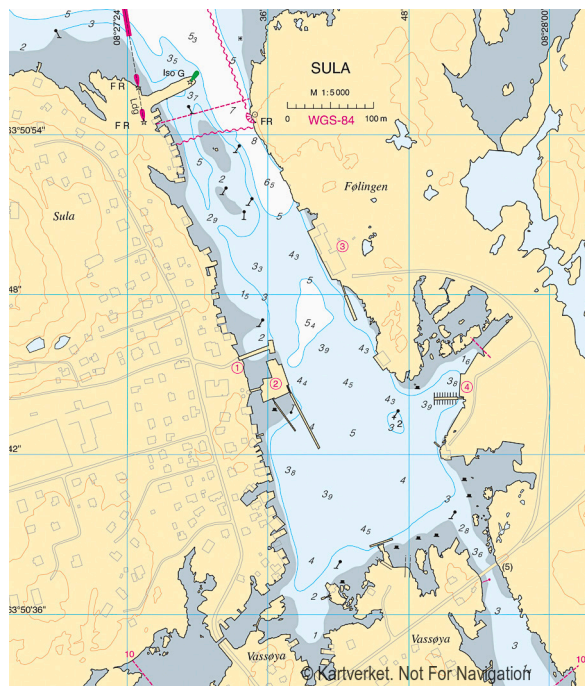
[Google](#)

DNL, Vol. 4, aerial photo & sketch map

One of the larger harbours in the area, Sula is an exquisite old fishing village that has been inhabited since 1300. It is now a tourist centre with around 70 residents.

Approaches: Enter from the N; the channel is well marked.

Anchorage, Moorings: There are two pontoons SW in the harbour, by the Terna pub.



For The Boat: Diesel is available on the fuel pontoon on the E side of the harbour. Electricity and water are available on the pontoons.



The visitors' pontoons by Terna pub at Sula, looking northwest.

For The Crew: There is a shop with a P.O.

Things To Do: Walk to the lighthouse for fine views of the archipelago. The lighthouse keeper's house is being restored by enthusiasts and rooms can be rented. Terna pub serves meals.

Mausundvær

63°52.15'N, 08°39.9'E

Last Updated: 2022

[Google](#)

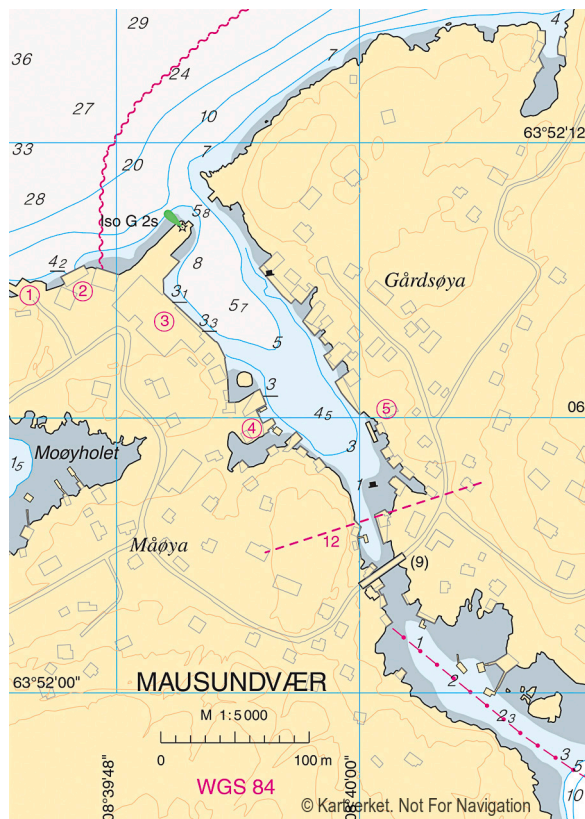
DNL, Vol. 4, aerial photo & sketch map

Mausundvær is an active fishing village and is the largest settlement in the islands N of Frøya.

There is a 12 m high cable at the SW end of the harbour.



Looking north/northwest out the harbour entrance at Mausundvær.



Anchorage, Moorings: There are visitors' berths in two locations:

- In the narrow sound between Måøya and Gårdsøya. Approach from the N through the narrow opening in the mole where there are no vertical restrictions. The visitors' pontoon is outside Kjeila kro on the Gårdsøya side of the sound. There is limited room to manoeuvre, but all-weather protection.

Visitors' pontoon at Den Muntre Matros, northeast on Lille Aursøya, Mausundvær, looking west/northwest.



- NE on Lille Aursøya. Approach from the NE from Landbøtskjær light. Two large pontoons with deep water are located outside Den Muntre Matros restaurant/pub. The harbour is somewhat exposed to the NE but offers nice views of the skerries.

For The Crew: Toilets and showers are available at both pontoon systems, depending on the season and the current caretakers.

Things To Do: Den Muntre Matros serves traditional meals, with limited opening hours.



Bogøyvær

63°52.4' N, 08°33.2' E

Last Updated: 2013

[Google](#)

S/V *Anna* alongside the pontoon in front of Supen pub in Bogøyvær, looking northwest.

Bogøyvær is a sheltered harbour with less than 20 full-time inhabitants.



© Hans Jakob Valderhaug

Approaches: Enter from the N.

Anchorage, Moorings: There is a pontoon in front of Supen pub.

Things To Do: Old whale bones are to be found in the area. Supen pub occasionally has live music.

Sauøya

64°00' N, 09°10.7' E

Last Updated: 2022

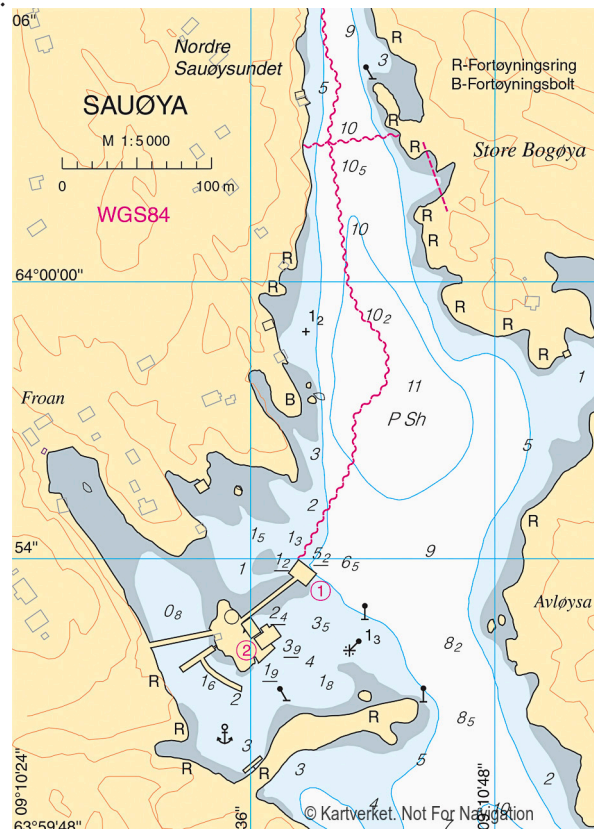
[Google](#)

DNL, Vol. 4, aerial photo & sketch map

The skerries between **Mausundvær** and **Halten** are Nature and Animal Protection Reserves.

Sauøya used to be an active fishing village with many old houses restored as summer cabins. The small farm was sold in 2012, since when there have been no year-round residents.

Approaches: Approach from the N or SE.



Anchorage, Moorings: You can moor alongside the wharf in good depth. Smaller boats may go alongside the pontoon SW in the harbour in approximately 2 m depth on the outside face. Kelp may prevent anchoring, and there is an unmarked water pipe.



The dock and small pontoon at Sauøya, looking northwest.

For The Boat: Water is available.

For The Crew: The nearest shop is at Sør Burøya, 3 nm SW.

Things To Do: There is a seasonal cafe and a small chapel to visit.

Halten

64°10.4' N, 09°24.4' E

Last Updated: 2022

[Google](#)

DNL, Vol. 4, aerial photo

[Website](#)

Halten is the N-most of the islands stretching out from Frøya. The lighthouse has been automated and the largest of the buildings are now managed by a trust and can be rented. Most of the houses on the island are in use as summer cabins by former residents.

The island has neither electricity nor water. The posts with cables crossing the island supply power to the light on Kvitingen from a generator at Halten Lighthouse.

The island has a unique end-of-the world atmosphere with a surprisingly well-protected harbour.

Halten visitors' pontoon and lighthouse, looking northeast.



Approaches: Enter from the SE between islands or from the W between the mole heads.

Anchorage, Moorings: There is a 50 m long visitors' pontoon SW in the harbour. The charted anchorage SW of the mole harbour is rather exposed and, at 17 to 20 m deep, will be too deep for most pleasure boats.



A puffin seemingly not too bothered by the remains of human activity on the mole at Halten.

Trondheimsfjorden and Approaches

Selvbukta (NW Trondheimsfjorden)

63°37' N, 09°43.4' E

Last Updated: 2013

[Google](#)

Once a pretty bay with plenty of room for anchoring, the installation of docks along the shore and industrial buildings on shore have both limited anchoring room and reduced aesthetic appeal. It could, however, still work as a passage stop *en route* to or from **Trondheim** in calm weather.

Anchorage, Moorings: There may be room for one boat to swing at anchor in 7 m depth further into the cove and there is plenty of swing room at 15 to 20 m depth. Open to the NE.

Trondheim

63°26' N, 10°22.5' E

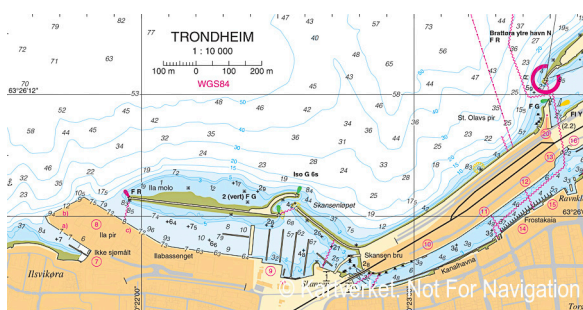
Last Updated: 2022

[Google](#)

DNL, Vol. 4, aerial photos & sketch maps

[Website - harbour](#)

Trondheim, Norway's third largest city, used to be Norway's capital and is now the major centre for the area. It is well worth the admittedly long detour up the fjord.



Looking west/southwest over the visitors' pontoon at Skansen Trondheim.

berthing places for visitors, all with comparable berthing charges:

→ Skansen Gjestehavn is located by the conspicuous industrial buildings W of the city centre. Enter either side of the mole not connected to

We spent May 17th, the day on which Norway celebrates its sovereignty and culture with parades and general festivities, in Trondheim, and it turned out to be one of our most memorable experiences in Norway. There is something admirable about a country that celebrates its national day focused on children and with little military fanfare.

Anchorage, Moorings: There are two main

shore (Ila molo). The long pontoon at the W end of the harbour is for visitors.



© Hans Jakob Valderhaug

Visitors' pontoon at Brattøra outer harbour, Trondheim, looking northeast.

→ Brattøra Gjestehavn located in Brattøra ytre havn, near the city centre. Pass between the mole heads, avoiding the express boats entering/departing. Pass the berths for the express boats into the inner basin where two long pontoons are reserved for visitors.



© Kartverket Not For Navigation

→ If these berths are full, enquire about vacant berths at Fosenkaia, inside two bridges (pedestrian and railway).



© Hans Jakob Valderhaug

Fosenkai Gjestehavn, Trondheim, looking west.

tions to London Gatwick with Norwegian Air Shuttle as well as to other places in Norway).

There is a service building at Skansen Gjestehavn and one on the city docks.

Things To Do: Trondheim has a cathedral, churches, a university, palaces and several museums, including an unusual and attractive museum of classical music. W of the city is the Bymark, a large wooded area with many hiking and skiing trails. Olavsfest is a week-long festival of culture, music and art every August that is worth taking in. The Rockheim national museum of popular music is near the Brattøra dock.

For The Boat: There is a fuel berth with good depths by Skansen Gjestehavn. Electricity is available on all pontoons and water at Skansen.

For The Crew: All amenities are available in Trondheim, including transportation connections for crew changes (there are good connections for crew changes).



Sandbakken Marina

63°29.2' N, 10°00' E

Last Updated: 2011

[Google](#)

This mole harbour is located on a point, a short way from the village of Stadsbygd.

Approaches: Entrance to the harbour is on the E side of the moles.

Anchorage, Moorings: There are floating pontoons with a few guest spaces.

For The Crew: There are toilets and showers at the boatclub and a shop in Stadsbygd.

Reinsbukta

63°32.9' N, 09°55.07' E

Last Updated: 2011

[Google](#)

Reinsbukta is a very small mole harbour, useful as it gives access to Reinsklosterer.

The extremely small boat harbour at Reinsbukta.



Approaches: Reinsbukta has a very narrow and shallow entrance only suitable for shallow draft vessels. Take care on entry!

Anchorage, Moorings: There is a 20 m long floating pontoon with guest spaces to starboard on entry. Note that there is little room for manoeuvring once inside the moles. If your boat is too large, you may wish to try tying up in Kvithyllhamna, a very industrial mole harbour 1.4 nm NNW.

Things To Do: Reinsklosteret (Rein Abbey) was built in 1226 as a convent for noblewomen and lies inland of the harbour about 2 km NNE.

Looking northwest over the pontoons at Sivertsvika (next page).





Sivertsvika or Sjursvika

63°37.17' N, 09°49.13' E

Last Updated: 2011

[Google](#)

Den Norske Los refers to this harbour as Sivertsvika while the chart shows Sjursvika.

Anchorage, Moorings: This small mole harbour has guest spaces on a small floating pontoon and at a small wooden community quay.

For The Boat: Diesel is available.

For The Crew: There are showers and toilets.

Hasselvika

63°38.04' N, 09°49.63' E

Last Updated: 2011

[Google](#)

Looking south into the harbour at Hasselvika.

Anchorage, Moorings: There is a 90 m long pontoon with guest places inside the moles and a community quay outside the harbour.

For The Boat: Electricity (for an extra charge) and water are available on the pontoon. There is a small mechanics shop.



For The Crew: There is a small convenience store and ferries to Trondheim.

Austrått

63°42' N, 09°45' E

Last Updated: 2022

[Google](#)

Anchorage, Moorings: Austrått is an attractive mole harbour with a guest pontoon.

For The Boat: Fuel is available.

For The Crew: There are showers, toilets and laundry facilities available at the campground.

Things To Do: You can tour an attractive historic manor house and an impressive WWII battleship turret emplaced as a coastal artillery.

Brekstad

63°41.2' N, 09°40.3' E

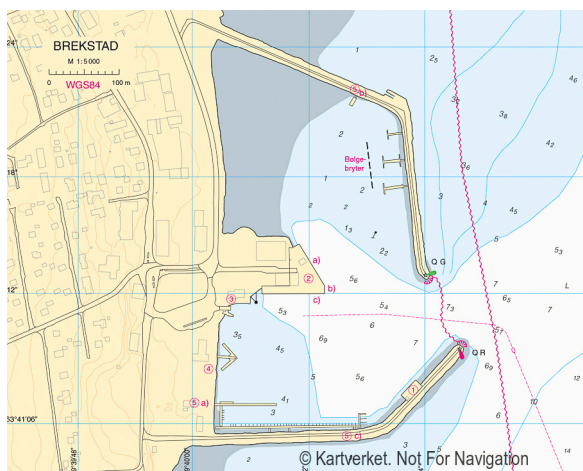
Last Updated: 2022

[Google](#)

DNL, Vol. 4, aerial photo & sketch map

Brekstad is a mole harbour in the mouth of the Trondheimsfjord, used by both ferries and express boats.

Anchorage, Moorings: There is a long visitors' pontoon in front of the hotel, SW





Above: The visitors' pontoon southwest in the harbour at Brekstad, looking southeast.

Right: The visitors' pontoon north in the harbour at Brekstad, looking south.



Things To Do: There is a restaurant in the hotel, and further eateries and a pub up the road.

Storfosnavågen to Rørvik

At the north end of this section there is an inshore alternative between Buholmråsa Light and **Rørvik** (Flatangerleia) as described in the introduction to this chapter.

Alternatively, there is an interesting, intricate, approximately 16 nm long lead, which starts 1.7 nm NE of **Nordøyan** (leave Langøya and Karlsøya to port and Tverrøyan to starboard). The lead exits at Valøyfjorden, with passage on either side of Kalvøya.

This lead is a fascinating experience, with seemingly innumerable islands and many areas resembling an inland lake. Navigation requires close attention but is not as difficult as you might think from looking at the chart, though we recommend you get local knowledge if possible.

There are a few anchorages charted in the lead but many more places where anchoring looks possible. Except for the villages of **Valøya** and **Borgan**, the only evidence you will see of human existence are perches and *varder*.

Storfosnavågen (S Storfosna)

63°39.2' N, 09°24.4' E

Last Updated: 2016

[Google](#)

Note that Tarva/Husøya to the N is a firing range, with activity announced on channel 16.

The area between Storfosna and Kråkvågøya is a Bird Protection Area. Vågkalven, W in the approaches, is part of the protection area with landing not allowed between April 15 and July 15.

Approaches: There is a bar just outside the entrance to the bay with 3.3 m depth on the W side and 4.6 m depth on the E side. There are leading lights/marks.

A sailboat anchored north in Storfosnavågen with the small mole harbour to the far left, looking south/southwest.



Anchorage, Moorings: This is an attractive bay with good holding in 7 m depth, sand/mud mix. There is also a visitors' pontoon in the mole harbour N in the bay.

For The Boat: There is electricity and water on the pontoon.

For The Crew: There is a service building, including laundry facilities, by the pontoon. There is a shop with post-in-shop.

Uthaug (Bjugn fjorden)

63°43.65' N, 09°35.1' E

Last Updated: 2023

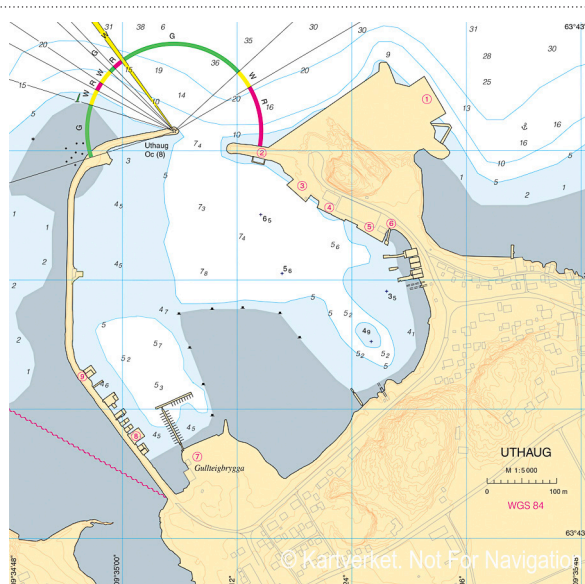
Google

DNL, Vol. 4, aerial photo & sketch map

There are Bird Protection Areas SW and E of Uthaug.

Approaches: Enter between the mole heads.

Anchorage, Moorings: Visiting boats are welcome to moor alongside the 50 m long outer pontoon at the small craft harbour SW in the main harbour. Alternatively, you can enquire about vacant fingerberths or tying up alongside a dock.



For The Boat: Water and electricity are available on the pontoon. Diesel is available.

For The Crew: There is a toilet and shower in the small red clubhouse.

Things To Do: When the mole harbour was built in 1924, it was located W of the old settlement of Uthaug. The settlement has now grown out as far

as the moles, but you can walk to the E mole, then stroll down Sjøgata to see the lovely restored buildings from the old days. Sjøgata ends in a small beach for those sizzling hot summer days!

S/V Anna is moored at the visitors' berths on the T-head of the pontoon system at Uthaug. Looking north towards the harbour entrance.



© Hans Jakob Valderhaug

The Uthaugsgården museum is worth a visit.

During WWII, 195 Russian POWs were held in Guldteigbrygga, the building on the docks by the pontoon harbour. The building is now managed by the local coastal heritage foundation (Kjeungen Kystlag).

Kjeungskjær Lighthouse, 2 nm W, can be rented.

Djupfest

63°46.9' N, 09°34.65' E

Last Updated: 2023

[Google](#)

This is a useful stop near the main N/S passageway, best suited to smaller vessels, especially in winds from the N. No facilities.

Many of the offlying islands (Tarva) are part of a nature reserve and bird sanctuary. To the W of Tarva there is a military firing range. Planned activity is announced on VHF 16 with details given on working channels.

Approaches: From the N through the mole opening. Do not enter when the ferry is manoeuvring.

The small mole harbour at Djupfest, looking north/northwest with Hurtigruten passing by offshore. The red sailboat is moored at one of the visitors' berths and the T-head (empty in this photo) is the other visitors' berth.



© Hans Jakob Valderhaug

Anchorages, Moorings: There is room for a couple of visiting boats at the pontoon system.

Things To Do: There is plenty of very nice walking on small local roads.

Steinvikbukta (Valsfjorden)

63°48.5' N, 09°39' E

Last Updated: 2014

[Google](#)

Ignore the windmills and quarry factory on your way in and you will find a well-protected anchorage in beautiful surroundings.

Anchorage, Moorings: Anchor in 6 m depth with good holding.

Sandnesvågen

63°51.1' N, 09°45.4' E

Last Updated: 2011

[Google](#)

Approaches: The approaches are well marked.

Anchorage, Moorings: It is possible to go alongside in the small harbour on the 25 m long pontoon. Alternatively, you can anchor in among the buoys in 10 m depth; sand bottom with some weed.

For The Boat: The small harbour provides diesel.



Looking east over the docks at Sandnesvågen.

For The Crew: There is a Coop store and laundry in the village. The harbour has a facilities building.

Lysøysundet

63°53.2' N, 09°52' E

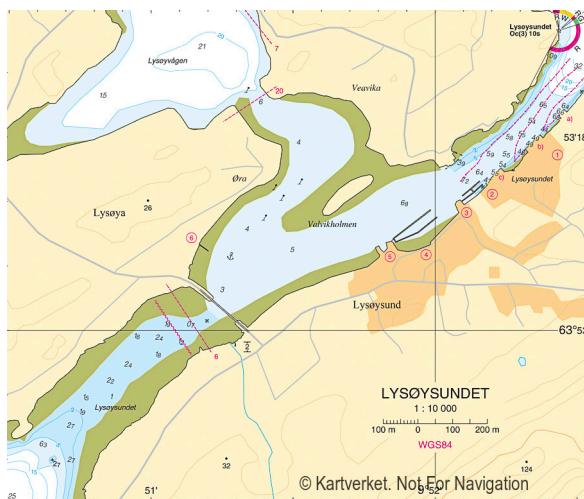
Last Updated: 2022

[Google](#)

DNL, Vol. 4, aerial photos & sketch map

This harbour is located on the mainland side of Lysøysundet.

Approaches: Approach from the NE. Due to extensive fish farming between Veddersholmen and Lysøya, it is best to pass N of the perch N of Veddersholmen.



Lysøysundet, looking north/northeast towards the approaches, with S/V Anna alongside the wavebreaker.



Anchorage, Moorings: Moor alongside the outside of the wavebreaker. These berths are exposed to the NE. It may be possible to use a vacant fingerberth, which are posted with a "Ledig" sign (mounted horizontally on the pontoon so difficult to see from the boat).

It may be possible to anchor in the inner bay, Lysøyvågen, past the 20 m overhead cable. There are mooring rings NW in the bay.



For The Boat: There is water and electricity on the pontoon.

For The Crew: There are toilets, showers (for a fee) and laundry facilities in the Lysøysundet Båtlag clubhouse by the S-most pontoon. There is a shop with groceries and a post-in-shop.

Things To Do: Åfjorden and area have a long tradition of wooden boat-building and Lysøysundet is a centre for the coastal heritage of the area. Every August there is a coastal heritage event (Kystkulturdagene). There is a *café/pub*.

Asen (N)

63°56.3' N, 09°46' E

Last Updated: 2016

[Google](#)

Asen is a lovely sheltered anchorage located between Asen and Vågsøya and between Asenleia to the W and Linesfjorden to the E.

Anchorage, Moorings: Anchor in 3 m depth in sand. Alternatively, there is a pontoon in the N bay with ≥ 2 m depth on the S side. If not used by locals or guests of the lighthouse it may be possible to moor alongside.



S/V Anna alongside the pontoon at Asen, looking north at Asenvågsøya Lighthouse.

Things To Do: There are beaches to explore and the lighthouse can be rented.



Stokkøy Marina (W Stokkøya)

64°02.9' N, 09°56.5' E

Last Updated: 2016

[Google](#)

[Website](#)

Stokkøy Marina, looking west,
with the bridge to Linesøya in the
far background.

This is a new marina in a new mole harbour in Sossvika, just E of the bridge between Stokkøya and Linesøya.



Approaches: Approach from the SE along the Stokkøya shore, passing E of two red perches, then turn 90° to starboard through the mole opening.

Boats with air draft < 16 m can approach from the N, but need to pass S around Torsholman and then follow the SE approach as described.

Anchorage, Moorings: There is a visitors' pontoon marked "Gjestekai" at the E end of the small pontoon system. This harbour is best suited to smaller boats.

Larger boats will prefer the snug **Kuringvågen marina** at Blindvågen, 1.5 nm SE.

For The Boat: Water and electricity are available on the pontoon. There is fuel on the pontoon outside the COOP shop at **Harsvika**.

For The Crew: There is a small service building with toilets and kitchen facilities and a grocery store.

Things To Do: It is a 10-minute walk to the beach

bar and restaurant at Stokkøya Sjøsender, which has won acclaim both for its architecture and the food served. Try the local beer—it is brewed in the building next to the marina.



The beach bar at Stokkøya
Sjøsender, 10 minutes' walk from
Stokkøy Marina.

Stokkøy Båtförening (Flatholmen)

64°02.16' N, 09°59.54' E

Last Updated: 2023

[Google](#)

A sailboat and small fishing boat at the visitors' berth at Stokkøy Båtförening. Above: Looking south. Below: Looking north.

This is a small well-sheltered and quiet marina just SW of Harsvika.

Anchorage, Moorings: Visitors' berths are on the outside of the outer pontoon.



© Hans Jakob Valderhaug

For The Boat: There is water on the pontoons and electricity may be available. There is fuel in Harsvika.



© Hans Jakob Valderhaug

For The Crew: There is a clubhouse with facilities, but you will need a member to let you in. It is a 25-minute walk or a short boat ride to the food shop in Harsvika.

Harsvika (SE Stokkøya)

64°02.8' N, 10°01.3' E

Last Updated: 2022

[Google](#)

Looking north at the pontoon outside the Harsvika shop and bunkering facilities.

Anchorage, Moorings: There is a quay with reasonable berthing and a pontoon outside the COOP grocery store. This is useful for shopping but exposed to the S and to wash from passing vessels.



© Eli Husum

There is also a small pontoon system inside a curved wavebreaker, just E of the pontoon outside the shop, where it may be possible to berth a small visiting boat at the E end.

A very snug option close by is the **Kuringvågen Marina** at Blindvågen, 1.5 nm to the SE, through the bridge with 30 m clearance that connects Stokkøya to Kjerkeholmen.

For The Boat: Diesel is available next to the shop; credit card only. Moor at the outer end of the pontoon for adequate depth; the hose is long.

For The Crew: There are shops and a P.O.

The small pontoon system at Harsvika in Stokksundet.



Things To Do: There is a pub and a small *café* in the COOP.

Kuringvågen Marina (Blindvågen)

64°02.4' N, 10°03.7' E

Last Updated: 2022

[Google](#)

When bad weather is forecast, this will be the harbour of choice on this stretch of coast.

Approaches: To enter Blindvågen, the sheltered cove .3 nm E of Revsnes, from Stokksundet, pass either to the NE or SW of Langholmen and then pass E of the small island just N of the cove, to avoid a shoal to the SW of the island.

Snugged up alongside the visitors' pontoon in Kuringvågen, hiding from a forecast northwest gale. Looking north/northeast towards the approaches.



Anchorages, Moorings: Kuringvågen is a large pontoon complex run by Åfjordbåten Kystlag. S of the private fingerberths there is a 60 m long, deep water pontoon for visiting boats. Moor alongside.

For The Boat: Kuringvågen Marina has water and electricity on the pontoons.

For The Crew: There is a service building at Kuringvågen Marina. There is a shop with a P.O. at Revsnes, 10 minutes' walk from the marina.

Things To Do: The Kuringen Bryggehotell is located right next to the marina. Their restaurant has a good reputation and they have a floating sauna.



Stokksundet Church (c. 1825), close to Kuringvågen Marina.

You can walk to the lovely Stokksundet church, which was moved from its original location at Kirkholmen to Revsnes.

Hongsand

64°08.86' N, 10°09.45' E

Last Updated: 2022

[Google](#)

While the harbour is somewhat dominated by the salmon processing plant, the old village along the beach retains its charm.

Anchorage, Moorings: Roan Sjøcamping has visitors' berths on the outside of their wavebreaker. There is a large sign indicating "Gjestekai". These berths are exposed in N'ly winds. Mooring fees are above average for the region.



S/V Anna alongside at Roan Sjøcamping Marina in Hongsand, looking north. Fish farming facilities can be seen in the left background.

© Hans Jakob Valderhaug

For The Boat: Water and electricity are available on the pontoon.

For The Crew: A service building may be available at the marina. There is a shop just up the road that also carries fishing tackle.

Things To Do: There is nice walking on the island.

Roan (NE Berfjorden)

64°10.8' N, 10°12.5' E

Last Updated: 2022

[Google](#)

DNL, Vol. 4, sketch map

Anchorage, Moorings: There is good holding in firm sand in 9 m depth in the well-sheltered area behind the mole extending N from Meholmen.



There are two mole harbours inside the bay but both are active fishing ports and do not seek visitors.



S/V *Milvina* anchored off the mole harbours at Roan.

For The Crew: There is a grocery store with a limited selection.

Annsteinsundet (W Værøya)

64°11.70' N, 10°04.15' E

Last Updated: 2022

[Google](#)

This is an exquisite little community on a small island in the Almenningssværet archipelago.

Approaches: The S approach is easiest as the NE approach is quite intricate. Note that the charted 13 m high overhead power cable at the N end of Annsteinsundet, the passage between Annsteinen and Værøya, has been replaced by a submarine cable after a sailboat tore the cable down some years ago.



Moored alongside the sailingclub pontoon in Annsteinsundet, looking west.

Anchorages, Moorings: Tie up to a pontoon in the sailingclub if available. Alternatively, anchor in Annsteinsundet, a charted anchorage.

For The Boat: Electricity is available on the pontoons.

Things To Do: There is limited but pleasant walking through the community and around the island.

Bessaker

64°14.9' N, 10°19.2' E

Last Updated: 2022

[Google](#)

DNL, Vol. 4, aerial photo

[Website](#)



Kaura Lighthouse in the offshore approaches to Bessaker, looking southeast.

The two visitors' pontoons in Bessaker, looking north/northwest.

This is a useful stopover very near the main passageway.

Note that a mole connecting Løaholmen with the mainland was completed in 2012 and a new marina inside the mole, Vikbukta, was completed in 2016.

Bessaker hosts a popular annual fishing competition the 3rd weekend of July.

Approaches: From Kaura Lighthouse, 5 nm WSW, the windmill farm above Bessaker is conspicuous in good visibility. Entry to the bay from here is clear.

Anchorage, Moorings: Vikbukta, .7 nm NE of the village harbour, has a well-sheltered guest pontoon in somewhat bleak surroundings. The old guest pontoon in the village harbour has been supplemented with another pontoon. Both are exposed to NE winds and only suitable in settled weather. The pontoon past the shop is for fuel only.

For The Boat: Water and electricity are available on the pontoon and diesel is available.

For The Crew: There is a shop. A toilet and shower are available in the red building at the head of the outer pontoon. Bessaker Båttforening has a service building with laundry facilities.

Things To Do: There are paths up to the windmill farm and an associated visitors' cabin with panoramic views. The paths are not marked and not easy to find—enquire locally.



The anchorage at Sørjervågen, looking west/northwest (next page).



Sørjervågen

64°16.30' N, 10°24.50' E

Last Updated: 2023

[Google](#)

Approaches: Enter Sørjerfjorden from the NNE, leaving Skjærbaken (covered at HW) to starboard, or enter from the NNW passing between the perches on Skjærbaken and Kvalen. The entrance bar charted as 5 m is now closer to 3 m at LW springs.

Note the 25 m overhead cable in the entrance to Sørjerfjorden.

Anchorages, Moorings: Anchor in 8 to 10 m depth where we found good holding in mud.

Things To Do: There are great views from the top of the rock to the S of the anchorage. The popular hike to Sørjerhesten (alt 363 m) begins from the SE end of Sørjerfjorden. It is a long trek from the anchorage along a paved road to where the hike begins; you may want to hitch a ride or take the dinghy to the trailhead.

Grisvågen (SW Indre Skjervøya)

64°17.02' N, 10°16.77' E

Last Updated: 2022

[Google](#)

Our contributors entered this lovely remote anchorage in gale force NNW winds and weathered a NNW Force 6, gusting higher, with no problems. Despite a few boat sheds in the bay, this is a peaceful and scenic anchorage.

In SW winds, you may prefer to seek shelter in the mole harbour at Skjervøya.

Approaches: Enter from the S, passing between Tjeldholmskjæret and Indre Skjervøya.

The anchorage in Grisvågen, Indre Skjervøya, looking northeast.



© Hans Jakob Valderhaug

Anchorages, Moorings: Anchor in 7 to 9 m depth, W of the private moorings. The holding is good and there are mooring rings ashore.

Things To Do: There are good views from the top of the rock hill on the S side of the anchorage.

Skjervøya

64°17.7' N, 10°18' E

Last Updated: 2006

Google

DNL, Vol. 4, aerial photo

Looking north across the inner harbour at Skjervøya with the small guest pontoon in the foreground.

This small community, with less than 20 permanent residents, is located on both sides of the sound between Indre and Ytre Skjervøya.

Approaches: Enter from the E, passing between Indre and Ytre Skjervøya.

Anchorage, Moorings: On the NE side of the mole there is a pontoon system with room for a 10 m long boat. The pontoon is marked *Gjestebrøyge*.

Alternatively, enquire about mooring at a private dock.

For The Crew: There is a shop with basic provisions open a couple of hours a day and when the express boat from **Sandviksberget** is in harbour.



Sandviksberget

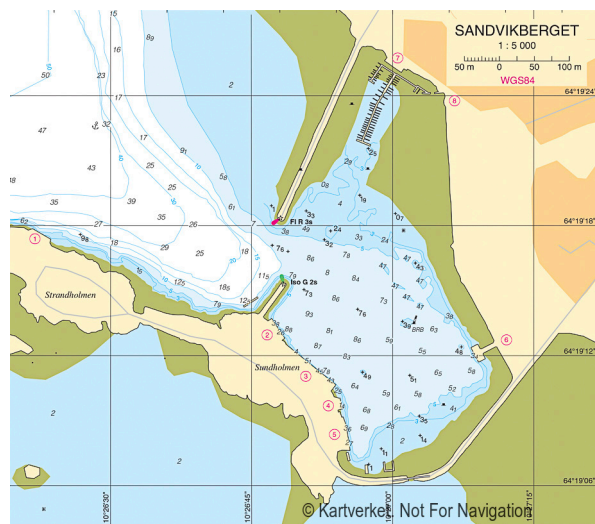
64°19.3' N, 10°26.8' E

Last Updated: 2022

Google

DNL, Vol. 4, aerial photos & sketch map

Strand Marina has a visitors' pontoon in this large mole harbour, which is a good place to wait out strong N'lies before crossing the exposed stretch of water known as Folda.



Approaches: Approach from the W through the opening in the mole. Turn 90° to port after the mole opening for the pontoon complex. Shallows are marked by wooden posts.

Anchorage, Moorings: The large pontoon complex N in the harbour has a visitors' pontoon at the outer end of the pontoon system in a charted depth of 2.5 m.

For The Boat: Electricity and water are available on the visitors' pontoon.



S/V Anna moored at the visitors' berth in Sandviksberget, looking northeast.

For The Crew: There is a service building with toilets, showers and laundry facilities. There is a grocery store by the express boat docks; follow the gravel road along the shore.

Vingsand

64°20.9' N, 10°27.6' E

Last Updated: 2022

[Google](#)

DNL, Vol. 4, aerial photo & sketch map

Vingsand is a small mole harbor best suited to small vessels. In N winds **Sandviksberget** provides better protection.

Anchorage, Moorings: Moor alongside the outside of the long wavebreaker on the E side of the harbour; the smaller boat may be able to moor at the pontoon on the W side.



For The Boat: Fuel is available and electricity is available for an extra charge.

For The Crew: There is a shop, toilets, showers, and laundry facilities.

Things To Do: The pub is open Friday, Saturday and Sunday evenings in the season. There is a small art gallery at the quay.

Setervågen

64°23.7' N, 10°28.8' E

Last Updated: 2022

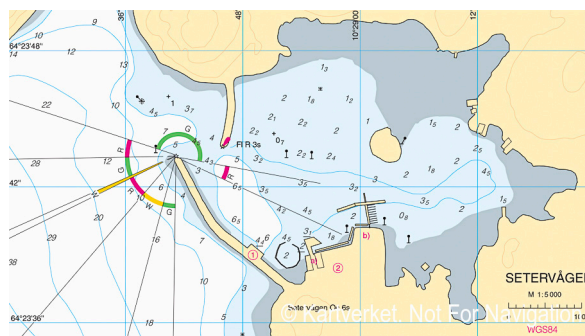
[Google](#)

DNL, Vol. 4, aerial photo & sketch map



The many hiking destinations accessible from Setervågen.

This is a scenic mole harbour at the SW tip of a large mainland peninsula. Once a fishing harbour, it is now being developed as a resort. While the harbour is well protected, N winds do funnel through the harbour with some strength, in which conditions **Sandviksberget** may be a better choice.



Approaches: Note that the sketch map has not been updated to show that the S mole has been extended as far to the N as the starboard-hand perch. There is now only one perch, a red with pointer, that should be left to the N.

Anchorage, Moorings: There is a floating pontoon.



Setervågen, looking southeast; the visitors' pontoons are straight ahead.

For The Boat: There is a fueling station on the fishing quay and fuel is available in **Vingsand**, 3 nm SSW. Electricity (for an extra charge) is available on the wharf.

For The Crew: There is a new facilities building with showers, toilets and laundry.

Things To Do: A short walk to the top of the rocky hill (Nesvågklubben), or toward Buholmråsa Lighthouse, provides fine views. There is a restaurant that operates in the season.

Nesvågklubben, accessed from Setervågen, looking west towards Buholmråsa Lighthouse.



Småværet

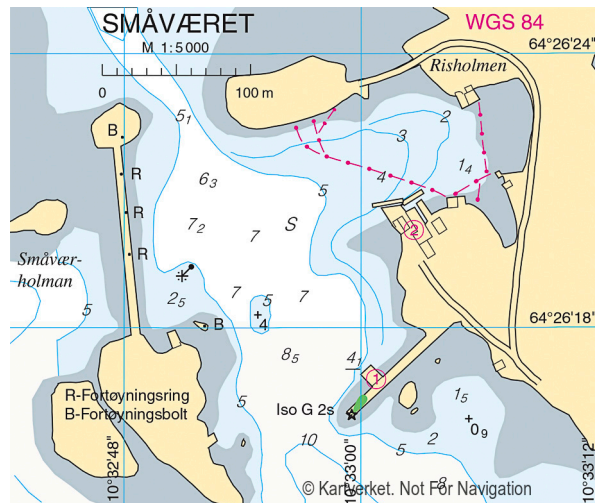
64°26.3' N, 10°33' E

Last Updated: 2022

[Google](#)

DNL, Vol. 4, aerial photo & sketch map

This is a small village with a couple of permanent residents, which is busy in the summer with holiday makers. It is popular with local boaters due to the pleasant pub and small shop. In 2014, a devastating fire destroyed many homes in this lovely village, which have since been rebuilt.



Approaches: Approach from the NW, passing W of the small islands and the landfill. Once S of the small island Mauran, head E and then N into the harbour. While there is a useful sketch in *Den Norske Los*, Vol. 4 (see above), there is sufficient detail in the chart for this approach.

The direct approach from the N is best left to locals.

Anchorage, Moorings: Moor at the council dock SE in the harbour or at the dock or pontoon in front of Brygga Pub where there is > 3 m depth alongside. Pay in the shop.



S/V Anna alongside the visitors' pontoon at Småværet, looking southwest.

© Hans Jakob Valderhaug

Things To Do: Enjoy the pleasant Brygga pub and neighbouring small shop.

Hasvåg (Skutnesbukta)

64°26.7' N, 10°35.4' E

Last Updated: 2022

[Google](#)

This is a small, very crowded mole harbour.

Approaches: There is a buoyed approach channel from the W and a marked approach from the N. The E side of the bay has been dredged, allegedly to 3 m depth.

Anchorage, Moorings: There is a clearly-marked visitors' pontoon, suitable for the smaller boat (our contributors felt their 39' boat was too large).

Kvaløyseteren

64°28.55' N, 10°41.8' E

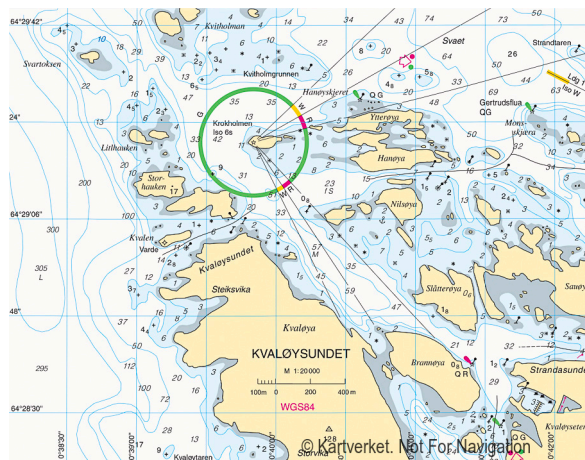
Last Updated: 2022

[Google](#)

DNL, Vol. 4, sketch map

This is a small mole harbour in pretty surroundings.

Note that the area SW of Leiskjær Light (64°27' N, 10°32' E) may break dangerously when a swell is running.



Kvaløyseteren harbour, looking west/northwest through the mole entrance.

© Hans Jakob Valderhaug

Approaches: Approach from the W through the opening in the mole.

Anchorage, Moorings: There is no dedicated visitors' berth; however, the smaller boat may be able to find space on the dock.

Alternatively, you can anchor off the beach SE on Kvaløya, .5 nm SW.

For The Crew: Toilets, showers and laundry facilities are located in the clubhouse.

Lauvsnes

64°29.95' N, 10°53.5' E

Last Updated: 2011

[Google](#)

DNL, Vol. 4, aerial photos

Lauvsnes is the administrative centre for the Flatanger municipality. It is a useful pitstop on the inner passage through the archipelago but best avoided in strong winds from the Wly quadrant.

Approaches: Approach from the NW with all hazards well marked.

If your air draught is under 15 m, you can approach from the NE under the 15 m high bridge and through the narrow but well-marked Toppsundet.

Anchorage, Moorings: Moor alongside the 100 m long pontoon, with more than 3 m depth alongside. In strong winds from the W enquire about mooring at the pontoon S in Lauvsneselva or anchor in the bight E of Lauvøyneset, .6 nm NNW.

For The Boat: Electricity, water and fuel are



Above: The Lauvsnes visitors' pontoon, looking west.

available.

The Lauvsnes visitors' pontoon, looking southeast.



For The Crew: Toilets, showers and laundry (for a charge) facilities are available at Stranda Båtforening, past the pub. There is a shop across the road from the pontoon.

Things To Do: Walk to Storfjellet for views of the town and skerries. The Zanzibar Inn serves food and liquid refreshments and might be a good place to enquire about where to observe the eagles for which the region is famous.

Villa Havn (Villa/Værsøya)

64°32.7' N, 10°42.6' E

Last Updated: 2022

[Google](#)

Right: S/V *Anna* alongside the wooden wharf at Villa Havn, looking north.



Above: The old Villa Lighthouse, looking east. The glass cupola is a recent addition to protect the old structure.

Anchored off the old settlement at Villa Havn, looking southeast.

This is the site of the first coal-burning lighthouse in Norway, built in 1839. At the time it was the only lighthouse N of Trondheimsfjorden.

Anchorage, Moorings: There is a small pontoon for visiting boats, best suited for the smaller boat. The old, rough dock will require a long fender-board. Alternatively, you can anchor in the bay in 5 to 10 m depth, sand bottom.



Things To Do: The old lighthouse is open to visitors for a small charge. For exercise you can walk to the summit of Villa (alt 108 m) for views of the skerries.

Jensøya (E)**64°35.15' N, 10°49.8' E**

Last Updated: 2022

[Google](#)

This is a scenic anchorage in an area with many eagles.

Approaches: Approach from the SW or the N.

Anchorage, Moorings: Anchor in 8 m depth. There are mooring bolts ashore for shorefasts. Good holding.

S/V *Milvina* anchored at Jensøya with the south entrance on the right side of the picture. Note the perch in the entrance.



Things To Do: There are mussels in a cleft on the W side of Jensøya.

Bjørøyværet**64°35.96' N, 10°48.95' E**

Last Updated: 2022

[Google](#)

In its heyday, the islands housed fishermen and even a pilot station. The old buildings are all gone, but there are a couple of holiday developments SE on Hamnarøya. Anchoring in this group of islands is not for the faint-hearted, but on a calm summer's day, it is worth the effort for its out-of-this-world atmosphere.



Anchored at Bjørøyværet, at the south end of Hamnarøya, looking southeast.

Approaches: The area is so riddled with rocks and shallows that a detailed description of the approach is not possible. The safest approach is to follow the leading line in the chart from the S, W of Brannøya, making a 160° turn to port as you approach Hamnarøya, to follow the leading line that runs WSW. Just after the turn is a shallow area with a charted 2 m depth at LW, but stray off the leading line and it shallows rapidly.

Anchorage, Moorings: There is just room for one boat to swing at anchor off the SW spit of Hamnarøya. Anchor in 8 to 10 m, in sand with seaweed.

Utvorda

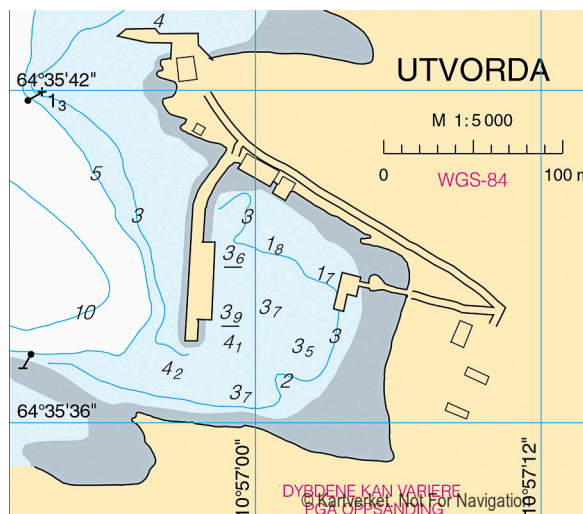
64°35.65' N, 10°57' E

Last Updated: 2022

[Google](#)

DNL, Vol. 4, sketch map

Approaches: Approach from the SW via the intricate inner passage through the Flatanger skerries.



Eli and Flatanger skerries seen through a gun emplacement opening.

Or approach from the N from Foldafjorden, then SW through Vordsundet, passing E of the cairn and light on Leiholmen.

Anchorage, Moorings: There are three new pontoons managed by Utvorda småbåthavn (not shown in the sketch map). Visitors are to moor on the outside of the E-most pontoon. Pay at Sjøbua Spiseri.



The visitors' pontoon at Utvorda, looking east/southeast.

For The Crew: Toilets are located at the campsite.

Things To Do: There is a BBQ site by the parking area on the docks. If you don't feel like cooking your own dinner, Sjøbua Spiseri is well-known for their fish dishes. They also serve coffee and cakes.

The path to Utvorda Festning begins at the docks. This is a large fort built for the occupying forces by Russian POWs during WWII. For a longer walk you can follow the sign to *Fylkesvei* from the gun emplacements. This makes for a 2-hour round trip, with the final 3 kms along a paved road.

Hamnvika

64°36.15'N, 10°57.2'E

Last Updated: 2022

[Google](#)

The pontoon at Hamnvika, looking southeast.

Ferie og Fritidshavner (a cruising guide that is no longer published) and the chart disagree about the naming of this cove; on the chart this cove is unnamed and Hamnvika is used for the cove .3 nm N. We have decided to go with local usage as reported in F&E.

Note that this is a fair-weather harbour.

Approaches: Leave the perch at the harbour entrance to starboard.

Anchorage, Moorings: The trust Stiftelsen Utvorden Festning provides a 40 m long, somewhat derelict, visitors' pontoon with more than 2 m depth alongside at the outermost end. Beware of shallow depths on the S side.

Things To Do: It is a 20-minute walk to **Utvorda**.



Namsos

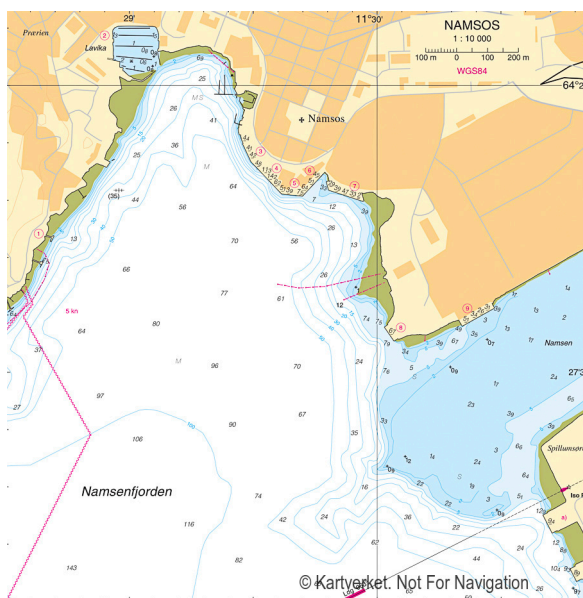
64°27.98'N, 11°29.4'E

Last Updated: 2011

[Google](#)

DNL, Vol. 4, aerial photos & sketch map

Namsos is a good-sized town with all facilities, including a shopping centre.



Anchorage, Moorings: Namsos has a 50 m long floating pontoon for guests in front of the shopping centre, as well as a few places in the small boat harbour. Note that both places are only suitable for shallow draft vessels.



Looking southeast over the visitors' pontoons at Namsos.

Brakstadhamn (NW Jøa)**64°40.25' N, 11°11.5' E**

Last Updated: 2022

[Google](#)[Website](#)

Looking west over the visitors' pontoon in Brakstadhamn.

Anchorage, Moorings: There is a 60 m long floating pontoon with guest spaces to port in the outer harbour.



In N winds, there is a good anchorage in 10 m depth in Brakstadvågen, the large cove S of Brakstadhamn.

For The Boat: There is water and electricity on the pontoon. There is a sailloft and chandlery 500 m from the harbour.

For The Crew: There is a service building (for an extra charge). Supplies are available at Fosnes, 3 km away.

Things To Do: There is a cozy pub at the head of the pontoon, in an old fisherman's hut, open in the season on Wed., Fri., and Sat.

Abelvær (Litle Kalvøya/Kalvøya)**64°44.1' N, 11°11.2' E**

Last Updated: 2022

[Google](#)

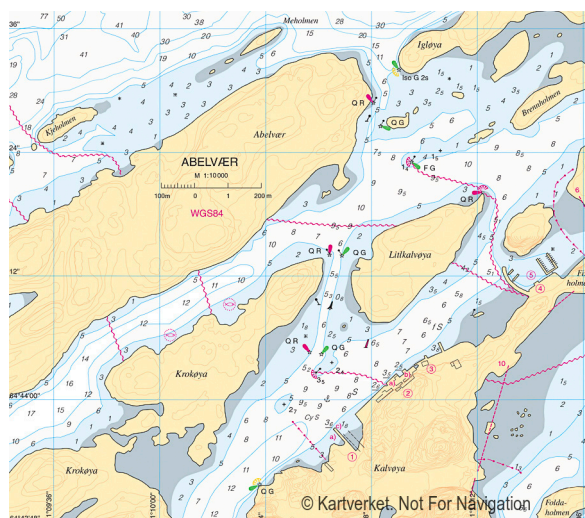
DNL, Vol. 4, aerial photo & sketch map

[Website](#)

Abelvær is located at the SW tip of a long string of islands running out from the mainland. Some people have found this an attractive stop, others not.

Anchorage, Moorings: Moor alongside the pontoons to the NW or NE. If full, there is a good anchorage .5 nm NE, in 3 to 4 m depth, past the moorings N of Brennholmen. In N'ly winds this will probably be the best anchorage in the region.

Upon request, large vessels may be able to moor along the docks SW in the sound between the islands.



For The Boat: Electricity and water are available on the pontoon and a telephone number is posted regarding diesel.

Abelvær harbour, looking east.



Below: The anchorage northeast of Abelvær harbour, looking north/northeast.



For The Crew: There is a service building with toilets, showers, and laundry facilities. A small grocery store is located in the village, 5 minutes' walk from the harbour.

Things To Do: There is a *café* on the docks and a seasonal pub at the nicely restored Abelvær farm, the old trading post. There is a fine beach nearby. Norwegian author Olav Duun lived in Abelvær and the area hosts an Olav Duun festival every summer.

Sør-Gjæslingan

64°44.5' N, 10°46.7' E

Last Updated: 2022

[Google](#)

DNL, Vol. 4, aerial photo & sketch map

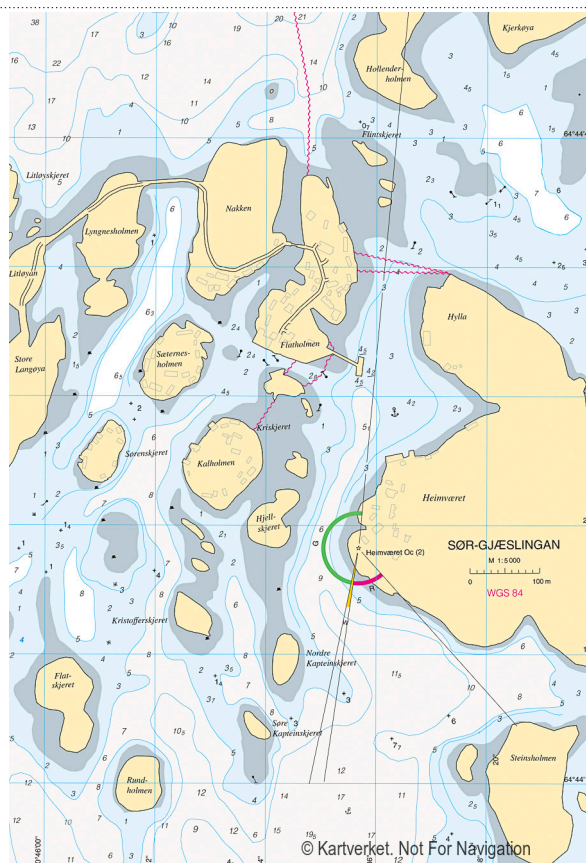
[Website](#)



Gjæslingan Lighthouse, 2 nm southeast of Sør-Gjæslingan, looking northeast.

This is a very interesting historic out-island harbour. Once important in the cod fishery, with a population of 4000, it now has no permanent residents. It is, however, bustling in the summer when the houses are occupied by holiday makers.

Approaches: The easiest approach is from the S, where Dørbrakan has a conspicuous perch with a knob on top. Leaving that to port and



The Sør-Gjæslingan visitors' pontoon looking east/southeast. The new pontoon was moored alongside the old when this photo was taken.

Kvernholmen with its cairn to starboard, will bring you into a well-marked fairway.

Anchorage, Moorings: Anchor in 4 to 6 m depth in the basin W of Heimværet (at the waypoint given) or, in settled weather, between the islands. There are mooring rings on many of the islands.



It may also be possible to moor at the rather rough dock E on Nakken or alongside another boat; enquire before leaving your boat unattended.

Alternatively, there is a visitors' pontoon behind the N mole on Nakken.

This is reached by passing through the well-marked passageway S of Nakken with charted depth of 2.4 m. After this the fixed-keel vessel will want to turn SW and leave the perch with pointer to starboard as the pointer indicates. A large "U-turn" will take you S of Sæternesholmen, then N to the pontoon.



The south approach to Sør-Gjæslingan, showing the light on the south end of Heimværet and the cairn with cross on Kvernholmen, looking south.

For The Boat: Electricity may be available in the season, produced by a generator.

For The Crew: There are toilets by the shuttle boat docks on Flatholmen.

Things To Do: The old P.O. and shop, known as Woxengs samlinger, is open under the aegis of the Rørvik Museum. Guided tours of the old buildings may be available in the season.



Nordøyen

64°48.4' N, 10°32.9' E

Last Updated: 2015

[Google](#)

DNL, Vol. 4, aerial photo

[Website](#)

This is a quiet and attractive harbour with a few summer residents, located 7 nm NW of **Sør-Gjæslingan**. It is impressive to note that the large SW mole was rebuilt in 1938 after a single storm demolished the old mole, which was the same size as the present one.

Anchorage, Moorings: There is excellent shelter in the harbour, which has a long guest pontoon with limited depth alongside, no cleats, and only a few rings to tie to.

It is also possible to hold your boat in place at the far S end of the harbour, with lines run ashore from all quarters.



© Christopher Barnes

Looking north over *S/Y Sila* alongside the pontoon at Nordøyen.

Things To Do: Since the lighthouse on the SE island is now automated, there are no longer any year-round residents. If you wish to visit the lighthouse, you can dinghy around to the landing stage near the light; note that the N end of the lighthouse sound is shoal and the S end has only 2 m depth. It is interesting to see how the light accomplishes its unusual fixed and flashing pattern FFI 40 seconds.

During John Armitage's visit in May 2000 he was lucky enough to talk with a retired lighthouse keeper named Arvid Nygaard, who was on duty the night of 21 October 1962 when the Hurtigrute ship *St. Swithin*, en route from **Trondheim** to **Rørvik** in a SW gale, struck on Oksen, and sank a short way NE, 3 nm SW of the lighthouse.

Their Mayday message gave a position SW of Gjæslingerne Light, which is 12 nm SE of Nordøyen, and it was not until the first lifeboat managed to get ashore at Nordøyen, 4 hours after the grounding, that Arvid was able to give the rescuers the correct coordinates for the wreck. There is a memorial plaque by the lighthouse. (The Norwegian book *Mayday fra St. Swithin* is interesting to look through even for those unable to read Norwegian.)



Bendslua

64°48.9' N, 10°38.4' E

Last Updated: 2008

[Google](#)

Looking west/southwest over the anchorage at Bendslua, with Nordøyan in the distance.

Anchorage, Moorings: You can anchor in this narrow slot between Benda, Hallarsøya and Storholmen in 4 to 7 m depth. You may wish to run lines ashore.





Valøya

64°55'N, 10°47'E

Last Updated: 2022

Google

DNL, Vol. 4, sketch map

Approaches: Enter from the N, holding as far W as possible, in 3 m least depth, as shown on the sketch map.

Anchorage, Moorings: Valøya is a mole harbour with good quays and a visitors' pontoon courtesy of Valøya Båtforening.

For The Boat: Electricity is available for an extra charge.

Borgan

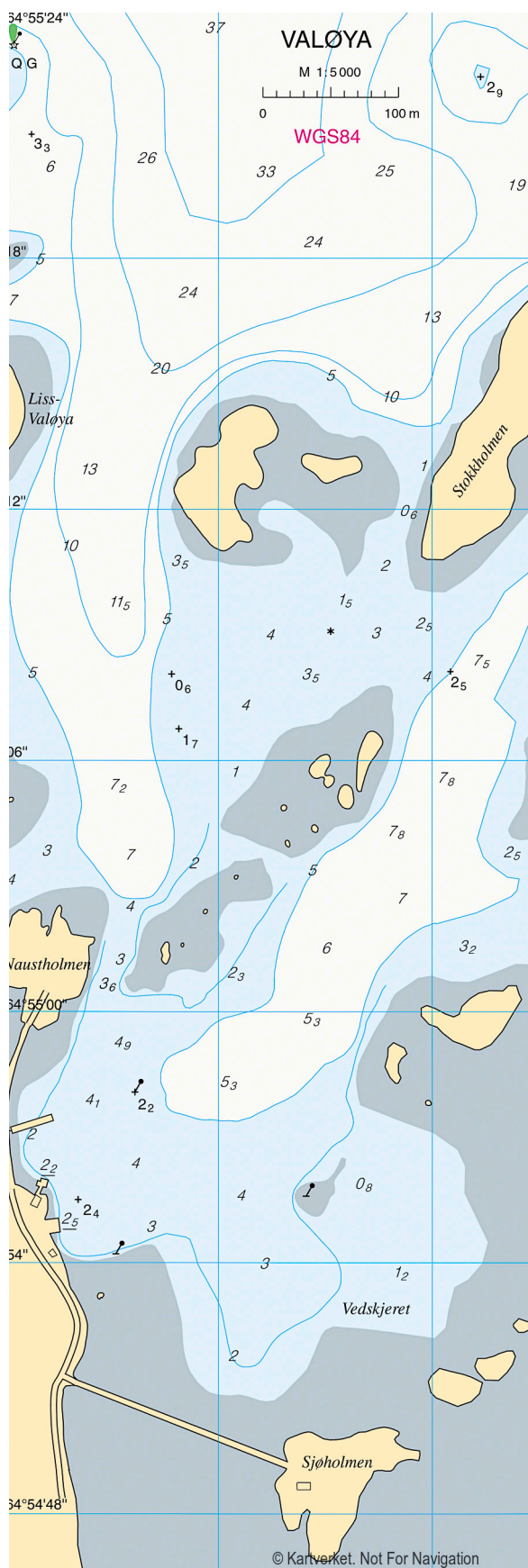
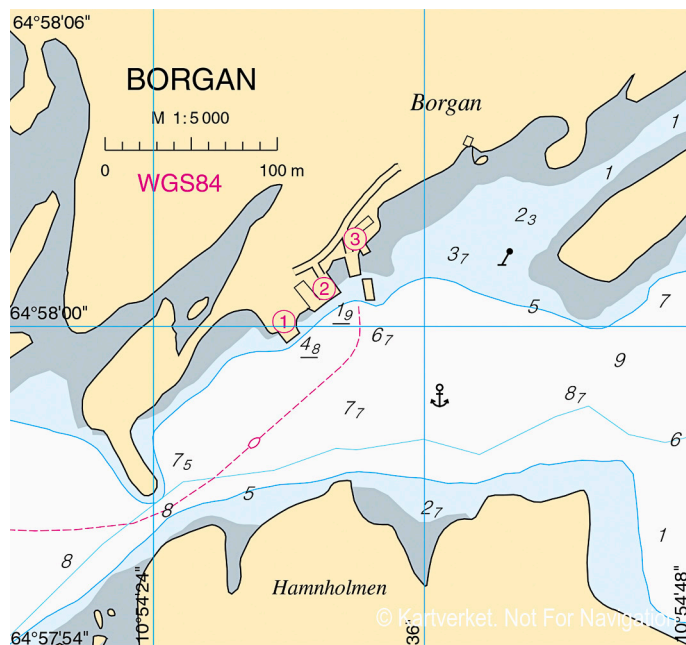
64°57.98'N, 10°54.5'E

Last Updated: 2022

Google

DNL, Vol. 4, sketch map

Anchorage, Moorings: There is a floating pontoon or else you can anchor off the dock as shown on the sketch map.





Lauvøyvågen

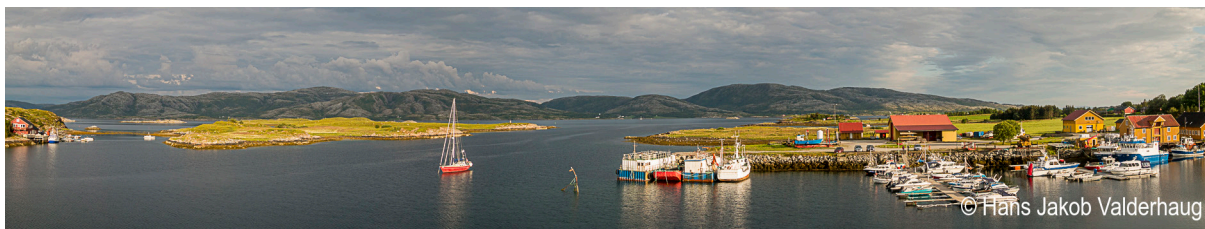
64°55.3' N, 11°19.2' E

Last Updated: 2022

[Google](#)

Lauvøyvågen is an alternate anchorage when **Rørvik** is crowded. Expect some wash from boats passing to and from the marina.

Approaches: Approach from the E with all hazards clearly marked.



The anchorage at Lauvøyvågen, looking southeast.

Anchorage, Moorings: Anchor in 18 m depth in the inner basin, where there is just room for one boat to swing at anchor with 1:4 scope. We found a mud bottom with good holding.

Straumsøya (E)

64°51.9' N, 11°16.1' E

Last Updated: 2007

[Google](#)

DNL, Vol. 4, sketch maps (see Rørvik)

Anchorage, Moorings: You can anchor in 10 m depth in thick kelp on loose sand in satisfactory holding in the anchorage on the E side of the island.



The south anchorage at Straumsøya, looking southwest, with Rørvik in the background.

There is a second anchorage at the S end of the island (65°51.8' N, 11°15.6' E) where one contributor reports that the slope shelves more steeply than shown on the chart, making anchoring difficult.

Both anchorages are only large enough for one boat to swing at anchor.

It is also possible to anchor to the W of Aunholman in 20 m depth, 1 nm N of Straumsøya.

Rørvik (SE Vikna)

64°51.6' N, 11°13.7' E

Last Updated: 2023

[Google](#)

DNL, Vol. 4, aerial photos & sketch maps

[Website](#)

Grinna Lighthouse in the south approaches to Rørvik, looking north, with the bridge over Nærøysundet in the distance.

Right: Ottersøya, across the sound from Rørvik.

Below: Rørvik and Straumsøya

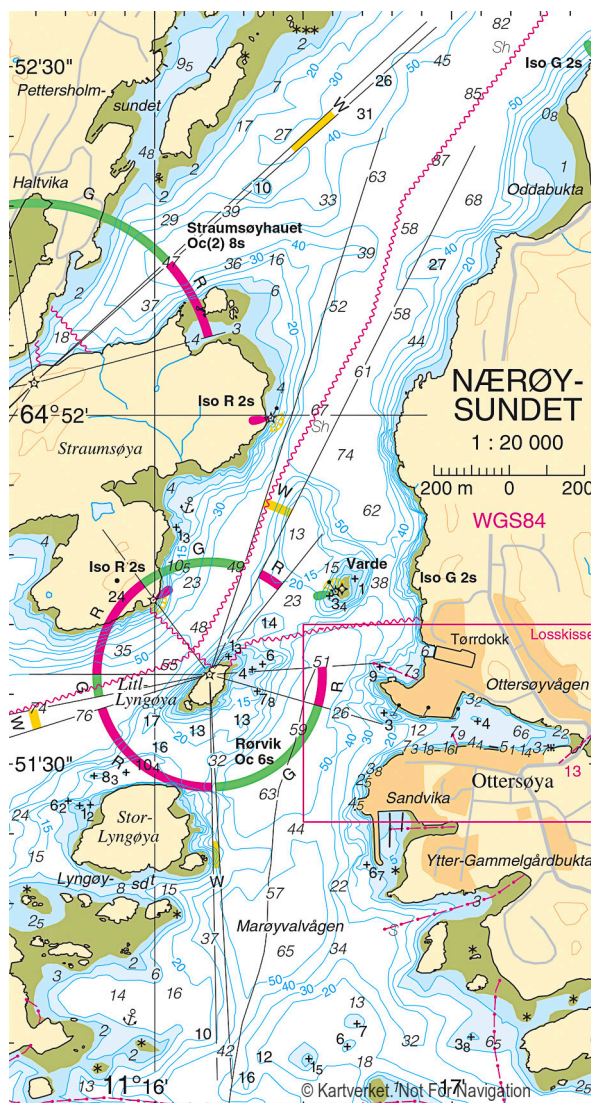
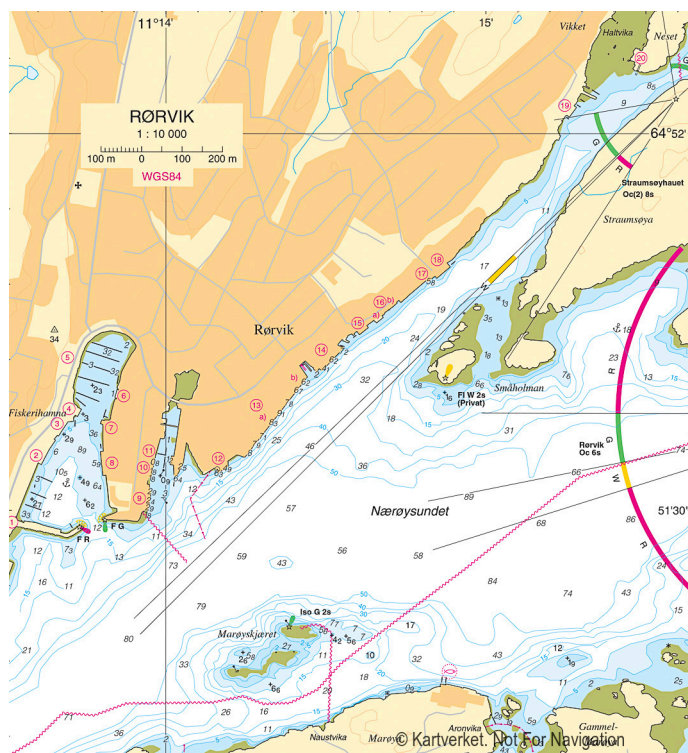
This substantial mole harbour is located 0.5 nm N of the bridge (clearance 41 m) over Nærøysundet. The location near the N/S fairway and close to the exposed stretch of water over Folda makes this a popular harbour. With some right the harbourmaster claims Rørvik is “the gateway to the north”.

Anchorage, Moorings:

Mooring for visiting boats is available alongside two pontoons N in the harbour, to port after the rescue boat station. It may also be possible for smaller boats to moor outside the outermost fingerberth at the pontoon system further into the harbour. Other mooring possibilities may be available upon enquiry.



© Hans Jakob Valderhaug



If full, Ottersøya, across the sound, has visitors' berths.

For anchorages in the vicinity, see **Straumsøya** and **Lauvvøyvågen**.

For The Boat: There is electricity and water on the pontoon. Fuel is available in a couple of places. Løhre AS (Minol), with its fuel pontoon in the

Looking southeast over Rørvik harbour.

sound N of the commercial harbour, is a dealer for LPG Norge. They may be able to fill foreign propane cylinders. Some chandlery is available. There are diesel mechanics. Fibreglass repairs and other boat work can be done.



© Hans Jakob Valderhaug

For The Crew: There is a service building and a good range of shopping. There is a bus to the national railway at Grong and an airport with flights to **Trondheim**.

S/V Anna alongside Rørvik visitors' pontoons, looking northwest.



© Hans Jakob Valderhaug

Things To Do: The Kystmuseet Rørvik (coastal heritage centre) is worth a visit. Enquire here about the ancient cave drawings at Solsemhola, which can be accessed from the anchorage at **Solsemvågen**, but only by prior arrangement with the museum. We hear good things about the museum restaurant.

The N-bound and S-bound coastal express ships (Hurtigrute) both dock here in the evening, offering you an opportunity to compare the different generations of ships used.

The tourist centre has maps for local trails.

