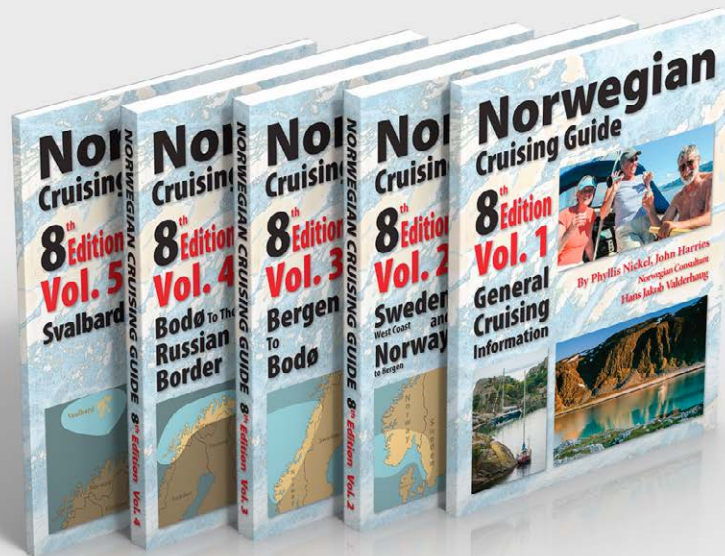


# Norwegian Cruising Guide



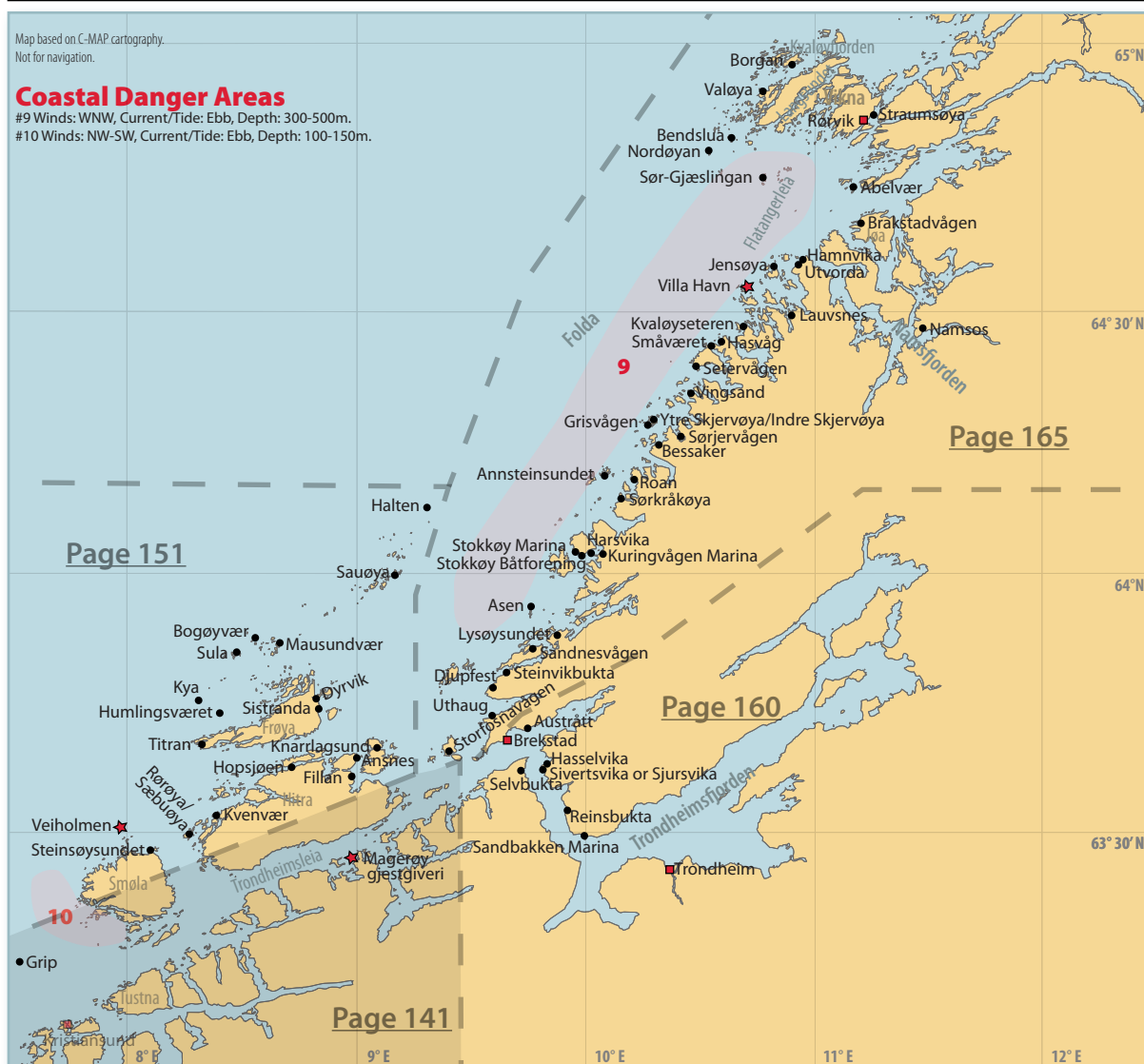
**8<sup>th</sup> Edition**

**Sample Chapter**

[www.norwegiancruisingguide.com](http://www.norwegiancruisingguide.com)



# Kristiansund to Rørvik



## Charts

Overview at 1:350,000:  
Charts 308 and 309. A nice luxury at 1:100,000: Chart 218. The recommended detailed coverage at 1:50,000: Charts 36 to 38, 43 to 48. To cover the gap between Charts 35 and 36, if needed: Chart 128 at 1:50,000. To cover the gap between Charts 36 and 37, if needed: Chart 129 at 1:50,000.

Most sailors pass through this area quite quickly, as they are in transit to Lofoten, Nordkapp or Svalbard; however, if you are lucky enough to have some time to spend here, there are many possibilities for more interesting and scenic routes than just following the main lead (Trondheimsleia). Below are two alternatives to the Trondheimsleia just E of Kristiansund:

- Sailing via Årsundfjorden, Auresundet, Torsetsundet and Dromnessundet before re-joining Trondheimsleia, provides a beautiful detour. There is an 18 m high bridge just after you leave Kristiansund turning S and then E and there is a 16 m high bridge in Torsetsundet, with shoal depth except under the small light on the bridge. There is another 16 m high bridge in Dromnessundet and one in Auresundet. Alternatives for an earlier exit from the detour are at Soleimsundet, which requires passing under another 18 m high bridge and two overhead cables at 21 m clearance, or at Imarsundet, which has a new 12 m high bridge. There are several anchorages and quays along the route.



For exploring the outer islands of Smøla, Hitra and Frøya at 1:50,000: Charts 40, 41 and perhaps 42. For Trondheim: Charts 39 and 130. For the inner reaches of Trondheimsfjorden: Chart 131. For areas less likely to be visited: Chart 47 for Namsfjorden and Chart 49 for the area west of Rørvik. Chart 458 for Trondheim.

Memorial at Titran for the 140 fishermen lost in the gale of October 1899.

- Another option is to explore the large islands of Smøla, Hitra and Frøya. The chart looks very intimidating with its large expanses of blue indicating depths less than 10 m in amongst innumerable skerries, but there are many well-marked channels that are easily navigated in reasonable weather. There are also many secure harbours, often with tiny fishing villages existing in an edge-of-the-world atmosphere. The harbour at Halten Lighthouse is the outermost point in this area.



Kjeungskjær Lighthouse in the approaches to Uthaug, looking south.

Like the inshore passage past Hustadvika (see Sognefjorden to Kristiansund), there is a partly inshore route past Folda, the exposed stretch of water between Buholmråsa Light (northwest of Småværet) and Grinna Lighthouse (northeast of Sør-Gjæslingan), called Flatangerleia. In settled conditions this provides a scenic and interesting alternative to the open-water route; however, it does require good passage planning and careful pilotage. This beautiful inside route has several variations marked on the chart, winding among many small islands and skerries with anchor-

**Den Norske Los**

Vol. 4

**Counties**Møre og Romsdal, Sør  
Trøndelag and Nord  
Trøndelag

© Hans Jakob Valderhaug  
Keeping watch over the inner  
harbour at Småværet, with the  
council dock in the background,  
looking west.

WWII installations at Utvorda  
Festning (fort), looking over  
the north approaches to  
Flatangerleia.

ing possibilities. *Den Norske Los*, Vol. 4, includes large-scale sketch charts of this area, which are useful although not absolutely necessary.

Once north of Folda you have the large Vikna archipelago ahead of you. At this point you can either take the main channel to Rørvik (the shortest route); an intermediate channel called Langsundet that runs between Mellomvikna and Ytrevikna and back to the main channel, bypassing Rørvik (note the bridge with an overhead clearance of 18 m); or the beautiful and intricate outermost channel, which starts northeast of Nordøyan, passes the harbours of Valøya and Borgann, and ends at Kvaløyfjorden, which runs to the south of Raudøya and Kvaløya and back to the main channel, north of Rørvik. This outer channel requires nerves of steel and local knowledge if possible.

**Landfalls and Favourites:** Trondheim and Brekstad are Ports of Entry, which are accessed by approaching Trondheimsfjorden north of Fuglen and Kvitholmen Lighthouses. Rørvik, another Port of Entry, is approached from the southwest, passing south and east of Grinna Lighthouse and then up Nærøysundet.

In Trondheimsleia, our favourite stop is at Magerøy gjestgiveri, which offers both well-protected pontoons and a carefully restored trading post with pub. On the outer route, Veiholmen is a true hurricane hole offering end-of-the-world scenery. Further north, the small villages in Flatangerleia are intriguing, with the anchorage at Villa Havn being our personal favourite for the scenery and frequent sighting of eagles.

**Tides and Tidal Streams:** The greatest spring tides in the area are 2 to 2.5 m. HW at Kristiansund is 25 minutes after Bergen and HW at Rørvik is 55 minutes after

Bergen. Tidal streams are moderate except in a few constricted passages, with the direction depending on local topography.

**Chapter Organization:** See **Kristiansund** at the end of the previous chapter.



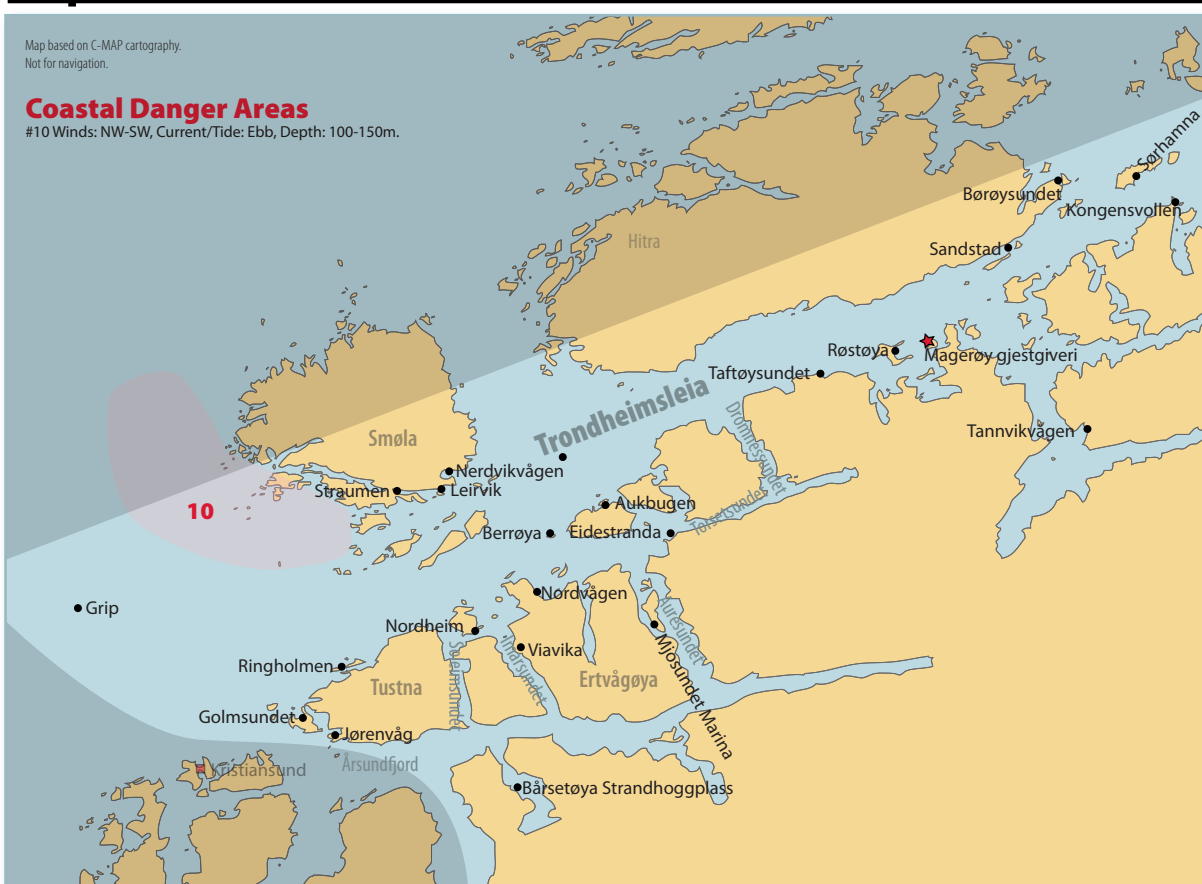
© Hans Jakob Valderhaug







## Grip to Sørhamna



### Grip

63°13.12' N, 07°35.65' E

Last Visited: 2016

[Google](#)

DNL, Vol. 4, aerial photo

[Website](#)

Right: S/V Anna moored at the shuttle boat docks at Grip, looking north.



Grip Lighthouse, looking west.

Grip is an offshore fishing village with the old fishermen's lodgings now nicely restored as holiday homes. There were 200 inhabitants as recently as the 1960s and, although there are no longer any permanent residents, the small community thrives in the summer months.



Note that the harbour behind the mole N on Grip is not suitable for sailboats.

**Approaches:** From the S, pass W of the *varde* on Inngripan, then N as charted until E of the light and perch on Grøningen. Turn NW towards the mole, passing between the mole head to starboard and the perch to port.

**Anchorage, Moorings:** This small mole harbour now has a dedicated visitors' pontoon, which is, however, not really suitable for larger boats. Larger boats may wish to moor alongside a fishing boat with permission or

Kristiansund to Rørvik

else use the express boat dock when it is free. Note that the express boat dock is also in use by vessels carrying goods to the island and you should not leave your boat unattended.



*S/V Anna* moored at the visitors' pontoon, looking southeast. Note the lines to the main dock as the pontoon is not built for larger boats.

An alternative is to leave your boat in **Kristiansund** and take the shuttle boat to Grip.

**Things To Do:** There is a *café* open in the season. There are lovely walks between the old wooden buildings. The stave church dates back to the 1400s; extensive restoration work was done in 2008 and 2016.

## Straumen (S Smøla)

63°19.7' N, 08°04.9' E

Last Visited: 2016

[Google](#)

DNL, Vol. 4, aerial photo

[Website](#)

The SW side of Smøla is a General Animal Protection area.

**Approaches:** Approach from the S is limited by the 16 m high bridge between Edøy and Kuli.



The pontoons at Straumen, looking southeast. Visitors moor on the T-head.

**Anchorage, Moorings:** This is a sheltered harbour, with visitors' berths alongside the outer pontoon.



**For The Boat:** Fuel is available. Electricity and water are available on the pontoon. Mechanical repairs are carried out.

**For The Crew:** There is a shop with post-in-shop and a health centre.

## Leirvik

63°20.2' N, 08°07.3' E

Last Visited: 2016

[Google](#)

The anchorage at Leirvik looking south with the hills of Tustna in the background.

This is a sheltered anchorage in beautiful surroundings.



© Hans Jakob Valderhaug

**Approaches:** Approach from the E, following the Smøla shore from Gjernesskjæret light.

**Anchorage, Moorings:** Anchor in the bight W of Vikkjelsøy and Hestøya in 6 to 7 m depth in mud with good holding.

## Nervikvågen (S Smøla)

63°21' N, 08°10' E

Last Visited: 2011

[Google](#)

The floating pontoon berths at Nervikvågen.

This harbour makes for a sheltered overnight stop. No facilities.

**Anchorage, Moorings:** Visitors' berths are located on the floating pontoons. If you prefer, enquire about tying to the quay. Alternatively, you can anchor in 8 to 10 m depth in good holding.



© Wolfgang Kritzler



## Golmsundet

63°10' N, 07°54.4' E

Last Visited: 2016

[Google](#)

This anchorage in the sound between Golma and Bjørnskotøya offers good protection. The W part of the anchorage is overlooked by a few buildings.

**Approaches:** From the N, passing W or E of Bjørnskotøya.



Looking southeast over the anchorage at Golmsundet.

**Anchorage, Moorings:** Anchor in 9 to 10 m depth E in the sound between the islands. There is good holding in mud.

## Jørenvåg (Ytre Kråkøya/Tustna)

63°08.7' N, 07°58.2' E

Last Visited: 2008

[Google](#)

**Anchorage, Moorings:** Anchor between Ytre Kråkøya and Tustna in 12 m depth. There are mooring bolts on the northeast side of Ytre Kråkøya.



Looking southwest over S/V Drott  
// anchored at Jørenvåg.

## Bårsetøya Strandhoggplass (Skålvikfjorden)

63°06.45' N, 08°16.5' E

Last Visited: 1996

[Google](#)

The likelihood of balmy inland weather makes this a favourite weekend rendezvous for sailors from **Kristiansund**.

**Anchorage, Moorings:** There are several pontoons in this bight on the SW side of Bårsetøya.

Kristiansund to Rørvik





**Things To Do:** There is a BBQ, children's play area, and many berries in season.

## Ringholmen

63°12.2' N, 07°57.6' E

Last Visited: 2016

[Google](#)

DNL, Vol. 4, aerial photo

[Website](#)

Ringholmen (unnamed on some charts) is the small island with the *varde* .15 nm SW of Hammersund Light and 8 nm NE of **Kristiansund**; the *varde* is incorporated into the roof structure of the large building.

The old fishing centre on Ringholmen was turned into a unique and unusual restaurant serving superb cuisine in the 1990s. In 2009, the property was bought by new owners who say they will continue to cater to visiting boats.

**Approaches:** You can approach from the N from Ytrefjorden, or in settled weather from SW through the leads, as charted.

**Anchorage, Moorings:** The pontoons in the inner basin appear in poor repair and in spring 2016 one section was largely submerged. There are a couple of temporary pontoons facing the passageway that may be useful for a lunchstop but these are susceptible to wash from passing boats.



The old fishing centre at Ringholmen.

If anchoring across from the pontoon, beware the charted cable.

**For The Crew:** There are toilets and showers in the restaurant when it's open.

## Nordheim

63°13.582' N, 08°12.57' E

Last Visited: 2011

[Google](#)

**Anchorage, Moorings:** It may be possible to tie up to a 15 m long private pontoon with big tyres. A fenderboard is needed. Call Tel.: +(47) 97 18 74 66 to enquire about availability.



Looking east over M/V Bran on the private pontoon at Nordheim.

**For The Boat:** Electricity is available 60 m from the dock. It is possible to arrange for water.

**For The Crew:** Showers are available.



## Viavika (W Ertvågøya)

63°12.65' N, 08°16.8' E

Last Visited: 2011

[Google](#)

Looking southwest over the stunning anchorage at Viavika.

This anchorage is located in beautiful surroundings with views of the almost 1000 m high hills in the vicinity. There are a few cabins and an old farm at the bottom of the bay.



**Approaches:** The approach from the N is limited by 12 m and 17 m high bridges. Sailboats with greater air draft will therefore have to approach from the S.

**Anchorages, Moorings:** Anchor behind Vikaholmen in 6 to 8 m depth. The holding is good in sand. There are mooring bolts on the W side of the shallow bay. Note that one contributor reports dragging here due to seaweed when anchoring in deeper water than the area shown in the photograph.

**Things To Do:** The new small cabin with a boat shed on the small headland W of the anchorage is Imarbu, a recent supplement to the almost 400 cabins managed by Den Norske Turistforening (the Norwegian Trekking Association). The cabin is linked by marked paths to other cabins along the *fjorderuta* (coastal path). At Imarbu there is a kitchen with supplies, several wood stoves and bunks for hikers. Have a look in the boat shed at the two *geitbåter* (traditional clinker-built rowing boats).

## Nordvågen (N Ertvågøya)

63°15.4' N, 08°19.3' E

Last Visited: 2007

[Google](#)

**Anchorages, Moorings:** Anchor in 14 m depth in the centre of the pool at the head of the cove. The bottom is a mix of sand and mud with good holding. The anchorage is exposed to the NE with otherwise all-round protection. Severe gusting can occur here in strong W winds.

## Mjosundet Marina

63°13.6' N, 08°30.3' E

Last Visited: 2012

[Google](#)

DNL, Vol. 4, aerial photo

As you approach Mjosundet, you may be put off by the heavy shipbuilding nearby, but once you are berthed it does not seem to intrude.

**Approaches:** The approach from the N through Mjosundet is via a bridge with 28 m clearance. The approach from the SE from Aursundet is via a tiny lead with a depth of 2.5 m. The approach to Aursundet from the N is limited by a 16 m bridge, while the passage from Aursundet through Oldervika is not feasible for sailing boats due to the 8 m bridge.





**Anchorage, Moorings:** A large pontoon system is available in well-sheltered attractive surroundings.

**For The Boat:** Electricity, water and fuel are available.

**For The Crew:** There is a new service building and a shop.

**Things To Do:** There is a seasonal pub. Lurvika, a few nm NE, is an old trading post harbour in the process of being restored. They have a visitors' pontoon.



Looking west over the pontoons at Mjosundet Marina.

## Berrøya

63°18.1' N, 08°19.5' E

Last Visited: 2015

[Google](#)

**Anchorage, Moorings:** Our contributor anchored in 5 m depth and reports good holding in a mix of sand/mud.

## Eidestranda

63°18.2' N, 08°32.3' E

Last Visited: 2009

[Google](#)

DNL, Vol. 4, aerial photo

The marina facilities were for sale in 2014 and their website is gone. We are uncertain what is happening with the marina at the time of writing.

**Approaches:** Enter from the N, E of Eidsholmen. Note the 16 m high bridge 2 nm ENE, with shoaling except under the small light on the bridge which marks the channel. Note also the 15 m high bridge 2.5 nm NW at Åkvik, should you be inclined toward that route.



Looking northwest over the pontoons at Eidestranda.

**Anchorage, Moorings:** This is an attractive sheltered harbour with marina pontoons.

**For The Boat:** Fuel is available.

**For The Crew:** There are showers and a shop.



**Things To Do:** There is a beautiful little church 5 nm NE of Eidestranda, at Stemshaug; the pontoon just E can probably be used for a visit ashore.

## Aukbugen (N Grisevågøya)

63°19.8'N, 08°25.9'E

Last Visited: 2013

[Google](#)

This charted anchorage lies 3 nm NE of **Berrøya**.

**Anchorage, Moorings:** It is possible to anchor in the outer harbour with good shelter except from the N.

Our contributor reports that they do not recommend the inner harbour due to lines and debris that fouled their anchor.

## Taftøysundet

63°25.72' N, 08°48.5' E

Last Visited: 2016

[Google](#)

Anchorage at Taftøysundet, looking west.

**Anchorage, Moorings:** This is a good anchorage with swinging room in 6 to 10 m depth in sand. Alternatively, there is a small mole harbour with pontoons S in the bay by Sørвика.



© Hans Jakob Valderhaug

## Røstøya (E)

63°26.6' N, 08°55.7' E

Last Visited: 2016

[Google](#)

S/V *Anna* anchored west of Valholmen at Røstøya, looking northeast.

This is a beautiful wild anchorage and a good passage stop on the E side of Røstøya. Though the island is a nature reserve to protect the coniferous forest, there is free access year-round. It is a popular recreation area that sees many daytrippers. Soløya to the SW is, however, a bird sanctuary with limited access.

### **Anchorage, Moorings:**

Anchor in 10 m depth in the small bay W of Valholmen and SW of Åmholmen. It is also possible to anchor S of Valholmen in 10 to 20 m depth on a hard sand bottom with rocks. Alternatively, there is a pontoon in 3 m depth in the small bay, SE on Røstøya, SW of the small island Svelungen.



© Hans Jakob Valderhaug





## Magerøy gjestgiveri (E Magerøya)

63°27' N, 08°59.4' E

Last Visited: 2016

[Google](#)

[Website](#)

Looking west at the quays and pontoons at Magerøy gjestgiveri. The pontoon layout has changed somewhat since this photo was taken.

Magerøya was an old trading post centrally located in Trondheimsleia. The old wooden building was used as lodgings and as a watering hole for sailors starting in 1687. The buildings are now owned by Hamnes municipality. Magerøya is a nature reserve.

**Approaches:** All hazards are charted and well marked.



**Anchorages, Moorings:** This is a small pontoon complex located outside large old wooden buildings. You can moor alongside the outermost pontoon or at a vacant fingerberth. If the docks are full, enquire about a mooring (Tel: +(47) 72 45 38 00).

**For The Boat:** There is electricity (for an extra charge) at the shore end of the pontoons.

**For The Crew:** There are toilets and showers (for a fee) in the guesthouse.

**Things To Do:** There is a pub and restaurant in the old trading post and rooms for rent. There is a small maritime museum and a footpath around the island.

## Tannvikvågen (Hemnefjorden)

63°23.3' N, 09°14' E

Last Visited: 1996

[Google](#)

**Anchorages, Moorings:** Anchor in attractive surroundings just before the overhead cable.

**Things To Do:** There is nice walking by the lakes to the NE.

## Sandstad (SE Hitra)

63°31.41' N, 09°06.6' E

Last Visited: 2006

[Google](#)

Though the chart shows this area as drying out, dredging for a small boatclub has created enough depth for anchoring just outside the channel.

**Anchorages, Moorings:** There is a small boatclub at the W end of the buoyed channel but the pontoon fingers are too short for a 39' boat. It is possible to anchor at the W end of the channel just before the pontoons in 3 m depth in good holding and shelter.



**For The Crew:** There are toilet facilities at the boatclub. There is a large campground on Hitra but there is no shop there.

## Børøysundet (SE Hitra)

63°34.3' N, 09°11.7' E

Last Visited: 2011

[Google](#)

[Website](#)

Looking north out the entrance to Børøysundet.

**Anchorage, Moorings:** There are two marinas with guest places in Børøysundet: a new marina with floating pontoons that can accommodate larger boats and an older smaller marina.



**For The Boat:** Electricity is available at the large marina for an extra charge.

**For The Crew:** There are pay toilets and showers, and laundry facilities. Shops are about 5 km from the docks.

**Things To Do:** There is a nice restaurant.

## Kongensvollen

63°33.1' N, 09°24' E

Last Visited: 2011

[Google](#)

Locals refer to this harbour as Kongsvoll.

**Approaches:** Approach between Åsøya and the mainland to the N; all hazards are well marked by perches with pointers and colour coding.

**Anchorage, Moorings:** Well-sheltered marina pontoons are available for an overnight stay both inside and outside the mole. There is also the option to anchor in 10 m depth, sand bottom, with good shelter.

**For The Boat:** Electricity is available on the pontoons. Water is available at the pontoon inside the mole for a charge (unusual for Norway). Fuel is available on the W side of the short-stay pontoon, for cash. The Kongensvoll Marina has boat storage and workshop facilities and can lift out up to 50 tons with their travelift.

For information on leaving your boat here for the winter, see Boat Storage Facilities in the Appendix (Volume I).



**For The Crew:** There are showers and laundry facilities at the campground.

Kongsvollen harbour, looking east.

**Things To Do:** There is a small *café*, with a bar, that operates daily in the season from 1200 until well into the evening.



## Sørhamna (S Sørleksa)

63°34.2' N, 09°19.6' E

Last Visited: 1996

[Google](#)

[Website](#)

This is a tiny, well-sheltered, peaceful, and very attractive mole harbour, E of Hitra.

**Approaches:** The entrance is well hidden until you are very close.

**Anchorages, Moorings:** The first quay is for the ferry and so you should use the second quay, or possibly the quay to starboard of the ferry quay, or tie to a fishing boat. The pontoons are too small for a sailboat.

*Den Norske Los* reports that it is possible to anchor either N or E of the small island (Hamneholmen). There are mooring bolts on the island.

## Veiholmen to Halten

### Veiholmen

63°31.15' N, 07°57.3' E

Last Visited: 2015

[Google](#)

DNL, Vol. 4, aerial photo

[Website](#)

The tortuous but very well-marked approaches to Veiholmen, looking northeast.

This is an extremely well-protected harbour surrounded by old buildings.

**Approaches:** From offshore, the lighthouse on Hauggjegla and the many windmills on Smøla are conspicuous. The passageways to Veiholmen from the SW and NE are narrow but extremely well marked with perches





Hauggjela Lighthouse, north in the approaches to Veiholmen.

with pointers. We would not recommend using the NE approach in a strong onshore wind.

Once inside the outer harbour, the guest harbour remains invisible and unmarked. To enter the inner harbour turn 90° to the S and then, at an apparent deadend, turn sharply to starboard into a spacious and wonderfully protected area.

***Anchorage, Moorings:*** Two pontoons offer berths for visiting yachts.

***For The Boat:*** Water and electricity are available.

***For The Crew:*** There are showers and laundry facilities at the Vågarbrygge Hotel, which overlooks the guest pontoon, and a shop.



SY *Sila* alongside at Veiholmen, looking northwest.

***Things To Do:*** Veiholmen is at the end of the impressive island-hopping road which makes an interesting walk or bike (there are bicycles for rent). Frequent bus service can bring you back, or even enable a daytrip from **Kristiansund**. There are also two restaurants and a pub if you are hungry and thirsty after your trek.

## Steinsøysundet (NE Smøla)

63°28' N, 08°06.27' E

Last Visited: 2011

[Google](#)

***Anchorage, Moorings:*** There is a small floating pontoon that may have room for visiting boats.

***For The Crew:*** There is a Coop grocery store in the village.

Looking northeast at M/V *Bran* alongside the pontoon at Steinsøysundet.







## Rørøya/Sæbuøya

63°29.9' N, 08°16.2' E

Last Visited: 1996

[Google](#)

Note that the overhead cables just N, charted as 14 and 11 m high, are actually both 11 m high.

**Anchorage, Moorings:** The sound between these two islands offers several sheltered anchoring places; one especially recommended is in the mouth of the first cove to the W after entry from the S, between the two small quays. There are several quays where you might berth with permission.

## Kvenvær (W Hitra)

63°32.05' N, 08°23.35' E

Last Visited: 2015

[Google](#)

DNL, Vol. 4, aerial photo

[Website](#)

Located in the lead between Hitra and Store Helsøya, Kvenvær is a sheltered mole-protected fishing harbour.

**Anchorage, Moorings:** Tie up alongside the floating pontoon. Note that it can be uncomfortable here due to wash from passing boats and in NE and SW winds.

**For The Boat:** Electricity and water are available on the pontoon. There is a chandlery.

**For The Crew:** There is a grocery store.

**Things To Do:** There is a very nice pub and restaurant.

## Hopsjøen (N Hitra)

63°37.75' N, 08°43.2' E

Last Visited: 2011

[Google](#)

[Website](#)

Hopsjøen once operated an enforced monopoly controlling all trade between Lofoten and **Bergen**.

**Anchorage, Moorings:** Located in the narrow lead between Hitra and Dolmøya, this is an attractive sheltered harbour with 2 floating pontoons. 300 m E is a new marina with an 80 m long floating pontoon with guest spaces.



Looking south over the docks at Hopsjøen.

**For The Boat:** There is a 16 m high bridge 1.5 nm to the E, and .5 nm E of the bridge lies the shipbuilding centre Kvernhusvika, with a pontoon and fuel.



**For The Crew:** There is a Coop grocery store 1 km E.

**Things To Do:** There is a hotel and restaurant and the historic old shop is a museum.



## Fillan (E Hitra)

63°36.51' N, 08°58.8' E

Last Visited: 2011

[Google](#)

DNL, Vol. 4, aerial photo

The guest pontoon furthest to the north in Fillan, looking north/northwest.

**Anchorage, Moorings:** Visiting boats can tie up in 3 places, all with at least 2 m depth:

- There is a new marina for small boats sheltered by a mole, with a 60 m long pontoon with room for visitors to moor on the outside of the pontoon with good shelter.
- N of this, in front of a big red building, is a 50 m long pontoon with visitors' berths on both sides.
- Continuing to the N, you can see the ferry quay and further N of this is a smaller pontoon of about 15 to 20 m length, which has visitors' berths as well.



**For The Boat:** Water and electricity are available on the long pontoon.

**For The Crew:** There is a grocery store in the town, which is about 1.5 km from the docks.

**Things To Do:** There is a coastal museum 500 m from the docks and an old wooden church that's worth a visit.

## Ansnes (NE Hitra)

63°38.3' N, 09°05' E

Last Visited: 1996

[Google](#)

**Anchorage, Moorings:** This is a mole harbour, just SW of a 16 m high bridge.

**For The Boat:** Fuel is available.

**For The Crew:** There is a shop.

## Knarrlagsund (Knarren Brygge)

63°39.75' N, 09°05' E

Last Visited: 2011

[Google](#)

[Website](#)

**Anchorage, Moorings:** Knarrlagsund lies in the narrow lead between Fjellværsøya and Ulvøya, just W of a 17 m high bridge.

There are pontoons on both sides, public to the N and private to the S.

**For The Boat:** Electricity is available on the pontoons for an extra charge. Fuel is available. Alfo is a boatyard which offers a wide range of repair services and has a crane. They also own Alfo Båthotell, which is a storage facility for boats at Singsholmen, NW on Fjellværsøya, about 2 nm SW.

For information on leaving your boat here for the winter, see Alfo Båthotell in Boat Storage Facilities in the Appendix (Volume I).





Looking east over the public  
pontoons at Knarrlagsund.



## Titran (SW Frøya)

**63°40.05' N, 08°19' E**

Last Visited: 2013

[Google](#)

DNL, Vol. 4, aerial photo &  
sketch map

[Website](#)

Titran is a small community with 70 to 80 year-round inhabitants.

**Approaches:** From offshore, Slettringen Lighthouse is conspicuous. Pass E of Sandholmen into Innervågen.

**Anchorage, Moorings:** There is a large wooden dock and an old pontoon in Innervågen, by the red building signposted Gaustadbrygga.

**For The Crew:** There are shops.

**Things To Do:** A guide is available for the WWII fort. A monument memorializes the 140 fishermen lost on the night of 13/14 October 1899. 100 of the fishermen came from Titran alone, which then had a population of around 600. The Fisherman's Mission (Fiskarheimen) offers accommodation and the elderly caretaker runs a *café* in the season.

Titran visitors' pontoon, looking  
east.





## Humlingsværet

63°45.4' N, 08°24.2' E

Last Visited: 1996

[Google](#)



138

## Kya

63°46.4' N, 08°18.8' E

Last Visited: 2013

[Google](#)

DNL, Vol. 4, aerial photo

The owner of Kya reassured Eli that this large cauldron was used in the past for cooking blubber for lights, not for supplementing the island diet with visiting sailors.

This is a sheltered abandoned harbour.

**Anchorage, Moorings:** Anchor with lines ashore.

The buildings of this abandoned fishing village burned down in 1978. Some of the buildings have been rebuilt by the new owner and are used as summer cabins.

Note that Kya is a fair-weather harbour only and should be avoided in strong winds. Also, since it is not included in the express boat routes that serve many of the neighbouring islands, Kya has not benefited from the new navigation markers that are seen in other parts of the archipelago.



© Hans Jakob Valderhaug

**Approaches:** Approach from the SE and aim for Littlelskjæret Light. Pass S of the light, keeping N of the perch with a pointer. From this point make a slow U-turn, passing W of the perch without a pointer and into the mole harbour.

**Anchorage, Moorings:** There is one private wooden pier with depth alongside of > 3 m. Enquire with the owner if present. There are also some private moorings. There are many mooring rings around the basin, especially along the N wall with depths of 1 to 2 m alongside and ladders.

Looking north over S/V Anna moored to the only dock suitable for keel boats in Kya.



© Eli Husum

**Things To Do:** Enjoy the “end-of-the-world” atmosphere.





## Sistranda (E Frøya)

63°44.15' N, 08°50.2' E

Last Visited: 1996

[Google](#)

DNL, Vol. 4, aerial photo & sketch map

The waters just E of Frøya are somewhat sheltered by Inntian and Uttian, and in the right weather this can be a pleasant sailing area.

**Anchorage, Moorings:** Sistranda is a small mole harbour with pontoons and quays.

**For The Boat:** Fuel is available.

**For The Crew:** There is a P.O., bank, [hotel](#) and dentist.

**Things To Do:** There is a museum.

## Dyrvik (E Frøya)

63°45.6' N, 08°49.5' E

Last Visited: 1996

[Google](#)

DNL, Vol. 4, aerial photo & sketch map

[Website](#)

**Anchorage, Moorings:** Dyrvik is a small mole harbour with quays and anchorage, just S of a 16 m high bridge. There are new pontoons at Dyrvik Marina. Visitors are allotted berths on the outside of the wave breaker, which are exposed in Nly winds.

## Sula

63°50.7' N, 08°27.8' E

Last Visited: 2014

[Google](#)

DNL, Vol. 4, aerial photo & sketch map

[Website](#)

One of the larger harbours in the area, Sula is an exquisite old fishing village that has been inhabited since 1300. It is now a tourist centre with around 70 residents.



© Hans Jakob Valderhaug

Looking northwest over the harbour at Sula. The visitors' pontoons are below the white building to the right of the photograph.

**Approaches:** Enter from the N; the channel is well marked.

**Anchorage, Moorings:** There are two pontoons SW in the harbour, by the Terna pub.

**For The Boat:** Diesel is available on the fuel pontoon on the E side of the harbour. Electricity and water are available on the pontoons.

**For The Crew:** There is a shop with a P.O.

**Things To Do:** Walk to the lighthouse for fine views of the archipelago. The lighthouse keeper's house is being restored by enthusiasts and rooms can be rented. Terna pub serves meals.

## Mausundvær

63°52.15' N, 08°39.9' E

Last Visited: 2008

[Google](#)

DNL, Vol. 4, aerial photo & sketch map

[Website](#)

Looking north/northwest out the harbour entrance at Mausundvær.

There is a 13.5 m high bridge SW of the harbour.



© Berit and Jarle Land

**Anchorage, Moorings:** This is a bustling fishing harbour, with a quieter smaller harbour just to the SW, and pontoons around .6 nm NW.

## Bogøyvær

63°52.4' N, 08°33.2' E

Last Visited: 2013

[Google](#)

[Website](#)

S/V Anna alongside the pontoon in front of Supen pub in Bogøyvær, looking northwest.

This is a sheltered harbour with 17 full-time inhabitants.

**Approaches:** Enter from the N.



© Hans Jakob Valderhaug

**Anchorage, Moorings:** There is a pontoon in front of Supen pub.





**Things To Do:** Old whale bones are to be found in the area. Supen pub occasionally has live music.

## Sauøya

64°00' N, 09°10.7' E

Last Visited: 2013

[Google](#)

DNL, Vol. 4, aerial photo & sketch map

The skerries between **Mausundvær** and **Halten** are Nature and Animal Protection Reserves.

Sauøya used to be an active fishing village with many old houses restored as summer cabins. The small farm was sold in 2012, since when there have been no year-round residents.

**Approaches:** Approach from the N or SE.

**Anchorage, Moorings:** You can moor alongside the wharf in good depth or alongside the pontoon SW in the harbour in approximately 2 m depth on the outside face. Kelp may prevent anchoring, and there is a new unmarked water pipe. There are plans to refurbish the municipal docks.



Looking northwest over the harbour at Sauøya. S/V Anna is tied to the wharf. Plans are to shorten and strengthen the curved pontoon to better accommodate visiting boats.

**For The Boat:** Water is available.

**For The Crew:** The nearest shop is at Sør Burøya, 3 nm SW.

**Things To Do:** There is a seasonal pub and *café* on the wharf. The church is open to visitors.

## Halten

64°10.4' N, 09°24.4' E

Last Visited: 2009

[Google](#)

DNL, Vol. 4, aerial photo

[Website](#)

Halten is the N-most of the islands stretching out from Frøya. The light-house has been automated and the largest of the buildings are now managed by a trust and can be rented. Most of the houses on the island are in use as summer cabins by former residents.

The island has neither electricity nor water. The posts with cables crossing the island supply power to the light on Kvitingen from a generator at Halten Lighthouse.

The island has a unique end-of-the world atmosphere with a surprisingly well-protected harbour.

**Approaches:** Enter from the SE between islands or from the W between the mole heads.

**Anchorage, Moorings:** There is a 50 m long visitors' pontoon SW in the harbour.

Looking north/northeast over the pontoon at Halten with the Halten Lighthouse in the background.



## Trondheimsfjorden and Approaches

### Selvbukta (NW Trondheimsfjorden)

63°37' N, 09°43.4' E

Last Visited: 2013

[Google](#)

Once a pretty bay with plenty of room for anchoring, the installation of docks along the shore and industrial buildings on shore have both limited anchoring room and reduced aesthetic appeal. It could, however, still work as a passage stop *en route* to or from **Trondheim** in calm weather.

**Anchorage, Moorings:** There may be room for one boat to swing at anchor in 7 m depth further into the cove and there is plenty of swing room at 15 to 20 m depth. Open to the NE.

### Trondheim

63°26' N, 10°22.5' E

Last Visited: 2015

[Google](#)

DNL, Vol. 4, aerial photos & sketch maps

[Website - harbour](#)

[Website - area](#)

Trondheim is the major centre for the area, it's Norway's third largest city, and was once its capital. It is a university town filled with old buildings; a beautiful city that is well worth the admittedly long detour into the fjord to visit. We spent May 17<sup>th</sup>, the day on which Norway celebrates its sovereignty and culture with parades and general festivities, there and it turned out to be one of our most memorable experiences in Norway. There is something admirable about a country that celebrates its national day focused on children and with little military fanfare.

Looking northeast over Skansen Gjestehavn, Trondheim, with the east mole entrance in the background. The visitor's pontoon runs across the photo from left to right.







**Approaches:** An extensive program to clear old debris and dredge the river bed should be completed by summer 2017. We suggest you contact the harbour office for current information (Tel.: +(47) 73 99 17 00).

To access the guest pontoons at Skansen Gjestehavn, enter between the W-most moles at the position given above, heading SE. The Skansen Gjestehavn pontoons are on your right, just before the Skansen Railway Lift Bridge.

To carry on to Fosenkai Gjestehavn, pass under the Skansen Railway Lift Bridge, which monitors VHF channel 74 (or Tel.: +(47) 91 67 27 66) between 0600 and 2330.

If you wish to enter the Nidelva River, you will need to pass under two more bridges after the Skansen Railway Bridge, which requires advance notice.

**Anchorage, Moorings:** There are two main berthing places for visitors, all with comparable berthing charges:

- There are 10 guest berths located at Skansen Gjestehavn, on large pontoons W of the Skansen Bridge, well sheltered by the extensive moles. It is a 10-minute walk to the city centre. If expecting strong NW winds, it may be preferable to moor with the boat's bow to the W end of the harbour.



Fosenkai Gjestehavn, Trondheim, looking west.

- Another option is the Fosenkai Gjestehavn pontoon, with 16 berths, which is located just outside the railway station inside the canal; however, it is said to be quite noisy here. The canal is .5 nm long and 100 m wide, with many private quays, which may be available with permission. There are also several private pontoons and, if space is available and you are able to borrow a gate key, these are another possibility.

The Tavern Gjestehavn in the Nidelva River, to starboard inside the Nidelva Bridge, at the junction with the E end of the canal, used to provide visitors' berths but, as of 2017, these are reserved for the sailing steamship SDS Hansteen.



If none of these are suitable, the local boatclub may have vacant berths or you can check out Børsa in Gaulosen.

**For The Boat:** Contact the harbourmaster (channel 14) to arrange for fuel delivery via barge. Fuel is also available at the pontoon near the guest pontoon at the Skansen Marina.

Electricity is available on all pontoons for an extra charge.

For information on leaving your boat here for the winter, see Boat Storage Facilities in the Appendix (Volume I).

**For The Crew:** All amenities are available in Trondheim, including transportation connections for crew changes (there are good connections to London Gatwick with Norwegian Air Shuttle as well as to other places in Norway).

The Port Public Guest House is very near the guest pontoons in the canal, offering showers and laundry; the key is available for a visitor at any berth, from the nearby Royal Garden Hotel. There is a new service building for visitors just next to the guest pontoons by the Skansen Bridge (toilets, showers and laundry facilities all require payment).

Free WiFi is available at the Skansen docks.

**Things To Do:** Trondheim has a cathedral, churches, palaces and several museums, including an unusual and attractive museum of classical music. W of the city is the Bymark, a large wooded area with many hiking and skiing trails. There is a week-long festival of culture, music and art every August that is worth taking in.

## Sandbakken Marina

63°29.2' N, 10°00' E

Last Visited: 2011

[Google](#)

This mole harbour is located on a point, a short way from the village of Stadsbygd.

**Approaches:** Entrance to the harbour is on the E side of the moles.

**Anchorage, Moorings:** There are floating pontoons with a few guest spaces.

**For The Crew:** There are toilets and showers at the boatclub and a shop in Stadsbygd.

## Reinsbukta

63°32.9' N, 09°55.07' E

Last Visited: 2011

[Google](#)

Reinsbukta is a very small mole harbour, useful as it gives access to Reinsklosterer.

**Approaches:** Reinsbukta has a very narrow and shallow entrance only suitable for shallow draft vessels. Take care on entry!

**Anchorage, Moorings:** There is a 20 m long floating pontoon with guest spaces to starboard on entry. Note that there is little room for manoeu-





ving once inside the moles. If your boat is too large, you may wish to try tying up in Kvithyllhamna, a very industrial mole harbour 1.4 nm NNW.



The extremely small boat harbour at Reinsbukta.

**Things To Do:** Reinsklosteret (Rein Abbey) was built in 1226 as a convent for noblewomen and lies inland of the harbour about 1 nm NNE.

## Sivertsvika or Sjursvika

63°37.17' N, 09°49.13' E

Last Visited: 2011

[Google](#)

*Den Norske Los* refers to this harbour as Sivertsvika while the chart shows Sjursvika.



Looking northwest over the pontoons at Sivertsvika.

**Anchorage, Moorings:** This small mole harbour has guest spaces on a small floating pontoon and at a small wooden community quay.

**For The Boat:** Diesel is available.

**For The Crew:** There are showers and toilets.

## Hasselvika

63°38.04' N, 09°49.63' E

Last Visited: 2011

[Google](#)

[Website](#)

**Anchorage, Moorings:** There is a 90 m long pontoon with guest places inside the moles and a community quay to starboard outside the harbour.



Looking south into the harbour at Hasselvika.

**For The Boat:** Electricity (for an extra



charge) and water are available on the pontoon. There is a small mechanics shop.

**For The Crew:** There is a small convenience store and ferries to **Trondheim**.



## Austrått

63°42' N, 09°45' E

Last Visited: 1996

[Google](#)

**Anchorage, Moorings:** Austrått is an attractive mole harbour with a guest pontoon.

**For The Boat:** Fuel is available.

**For The Crew:** There are showers, toilets and laundry facilities available at the campground.

**Things To Do:** You can tour an attractive historic manor house and an impressive WWII battleship turret emplaced as a coastal artillery.

## Brekstad

63°41.2' N, 09°40.3' E

Last Visited: 2015

[Google](#)

DNL, Vol. 4, aerial photo & sketch map

**Anchorage, Moorings:** Brekstad is a mole harbour just N of Trondheimsfjorden, with guest spaces on pontoons in the marina and a small guest pontoon N in the harbour.



Looking east over the pontoons and mole entrance at Brekstad.

**For The Boat:** Fuel is available S in the harbour; foreign credit cards accepted. Electricity is available on the pontoons.

**For The Crew:** There is shopping 300 m from the dock, laundry facilities, showers, and an express ferry to **Trondheim**.





## Storfosnavågen to Rørvik

At the north end of this section there is an inshore alternative between Buholmråsa Light and Rørvik (Flatangerleia) as described in the introduction to this chapter.

Alternatively, there is an interesting, intricate, approximately 16 nm long lead, which starts 1.7 nm NE of Nordøyan (leave Langøya and Karlsøya to port and Tverrøyan to starboard). The lead exits at Valøyfjorden, with passage on either side of Kalvøya.

This lead is a fascinating experience, with seemingly innumerable islands and many areas resembling an inland lake. Navigation requires close attention but is not as difficult as you might think from looking at the chart, though we recommend you get local knowledge if possible.

There are a few anchorages charted in the lead but many more places where anchoring looks possible. Except for the villages of **Valøya** and **Borgan**, the only evidence you will see of human existence are perches and *varder*.

### Storfosnavågen (S Storfosna)

63°39.2' N, 09°24.4' E

Last Visited: 2016

[Google](#)

Note that Tarva/Husøya to the N is a firing range, with activity announced on channel 16. This range may see increased activity as Ørlandet, on the mainland close by, is being developed as Norway's air force base.

The area between Storfosna and Kråkvågøya is a Bird Protection Area. Vågkalven, W in the approaches, is part of the protection area with landing not allowed between April 15 and July 15.

**Approaches:** There is a bar just outside the entrance to the bay with 3.3 m depth on the W side and 4.6 m depth on the E side. There are leading lights/marks.

A sailboat anchored north in Storfosnavågen with the small mole harbour to the far left, looking south/southwest.



© Hans Jakob Valderhaug

**Anchorage, Moorings:** This is an attractive bay with good holding in 7 m depth, sand/mud mix. There is also a visitors' pontoon in the mole harbour N in the bay.

**For The Boat:** There is electricity and water on the pontoon.

**For The Crew:** There is a service building, including laundry facilities, by the pontoon. There is a shop with post-in-shop.



## Uthaug (Bjugnfjorden)

63°43.65' N, 09°35.1' E

Last Visited: 2011

[Google](#)

DNL, Vol. 4, aerial photo & sketch map

There are Bird Protection Areas SW and E of Uthaug.

**Approaches:** Enter between the mole heads.

**Anchorage, Moorings:** Visiting boats are welcome to moor alongside the 50 m long outer pontoon at the small craft harbour SW in the main harbour. Alternatively you can enquire about vacant fingerberths or tying up alongside a dock.



Looking southeast over the guest pontoon at Uthaug. The harbour entrance is just to the left of the photograph.

**For The Boat:** Water and electricity are available on the pontoon. Diesel is available.

**For The Crew:** There is a toilet and shower in the small red clubhouse.

**Things To Do:** When the mole harbour was built in 1924, it was located W of the old settlement of Uthaug. The settlement has now grown out as far as the moles, but you can walk to the E mole, then stroll down Sjøgata to see the lovely restored buildings from the old days. Sjøgata ends in a small beach for those sizzling hot summer days!

The [Uthaugsgården museum](#) is worth a visit.

During WWII, 195 Russian POWs were held in Guldteigbrygga, the building on the docks by the pontoon harbour. The building is now managed by the local coastal heritage foundation ([Kjeungen Kystlag](#)).

[Kjeungskjær Lighthouse](#), 2 nm W, can be rented.

## Djupfest

63°46.9' N, 09°34.65' E

Last Visited: 2007

[Google](#)

Djupfest is a convenient stop on the way N from **Trondheim**. No facilities.

**Anchorage, Moorings:** There is room alongside the floating dock for one, maybe two, visiting boats in this pleasant well-protected but small harbour. Boats larger than 40' in length would probably have difficulty manoeuvring due to lack of space, especially in strong N winds.

**Things To Do:** There is plenty of very nice walking on small local roads.





## Steinvikbukta (Valsfjorden)

63°48.5' N, 09°39' E

Last Visited: 2014

[Google](#)

Ignore the windmills and quarry factory on your way in and you will find a well-protected anchorage in beautiful surroundings.

**Anchorage, Moorings:** Anchor in 6 m depth with good holding.



## Sandnesvågen

63°51.1' N, 09°45.4' E

Last Visited: 2011

[Google](#)

**Approaches:** Well-lit approach.

**Anchorage, Moorings:** It is possible to go alongside in the small harbour on the 25 m long pontoon. Alternatively, you can anchor in among the buoys in 10 m depth; sand bottom with some weed.



Looking east over the docks at Sandnesvågen.

**For The Boat:** The small harbour provides diesel.

**For The Crew:** There is a Coop store and laundry in the village. The harbour has a facilities building.

## Lysøysundet

63°53.2' N, 09°52' E

Last Visited: 2010

[Google](#)

DNL, Vol. 4, aerial photos

This harbour is located on the mainland side of Lysøysundet.

**Approaches:** Approach from the NE. Due to extensive fish farming between Veddersholmen and Lysøya, it is best to pass N of the perch N of Veddersholmen.

**Anchorage, Moorings:** You can moor to the first pontoon to port after passing the old factories. The pontoon is signposted Lysøysund Veteranbåthavn. Guest places are mostly on the outside of the pontoon.

You can also moor at the second long pontoon, which belongs to Lysøysundet Båtlag. Visiting boats should moor on the N side (outside) of this pontoon, alongside the main pontoon or else alongside one of the two fingerpiers. The pontoons are exposed to NE winds. There is another pontoon along the shore but it is shallow alongside.

It is also possible to anchor further in the sound, which is well marked with wood perches and pointers. Boats with a mast height > 20 m must anchor before the overhead cable. Boats with a mast height < 20 m will find a pleasant anchorage past the cable, SW in Lysøyvågen, in 13 to 15 m depth. There are several mooring rings on the NW side of the bay.

**For The Boat:** Water and electricity are available on both pontoons.



Looking east/northeast at the old factory buildings in Lysøysundet. The Veteranbåthavn pontoon is by the red buildings and the Båtlag pontoon is just visible on the left of the photo.

**For The Crew:** There are toilets, showers (for a fee) and laundry facilities in the Lysøysundet Båtlag clubhouse by the S-most pontoon. There is a shop with groceries and a P.O.

**Things To Do:** Åfjorden and area have a long tradition of wooden boat-building and Lysøysundet is a centre for the coastal heritage of the area. Every August there is a coastal heritage event (Kystkulturdagene). There is a *café*.



## Asen (N)

63°56.3' N, 09°46' E

Last Visited: 2016

[Google](#)

Asen is a lovely sheltered anchorage located between Asen and Vågsøya and between Asenleia to the W and Linesfjorden to the E.

**Anchorage, Moorings:** Anchor in 3 m depth in sand. Alternatively, there is a pontoon in the N bay with ≥ 2 m depth on the S side. If not used by locals or guests of the lighthouse it may be possible to moor alongside.

S/V *Anna* alongside the pontoon at Asen, looking north at Asenvågsøya Lighthouse.

**Things To Do:** There are beaches to explore and the lighthouse can be rented.







## Stokkøy Marina (W Stokkøya)

64°02.9' N, 09°56.5' E

Last Visited: 2016

[Google](#)

[Website](#)

This is a new marina in a new mole harbour in Sossvika, just E of the new bridge between Stokkøya and Linesøya.

**Approaches:** Approach from the SE along the Stokkøya shore, passing E of two red perches, then turn 90° to starboard through the mole opening.

Boats with air draft < 16 m can approach from the N, but need to pass S around Torsholman and then follow the SE approach as described.

Stokkøy Marina looking west with the bridge to Linesøya in the far background.



**Anchorage, Moorings:** There is alongside berthing for visitors at the pontoon marked *Gjestekai*. The harbour fee is payable using the [gomarina app](#) or the honesty box when the service building is open.

**For The Crew:** There is a small service building with toilets and kitchen facilities.

**For The Boat:** Water and electricity are available on the pontoon.

**Things To Do:** It is a 10-minute walk to the beach bar and restaurant at [Stokkøya Sjøsender](#), which has won acclaim both for its architecture and the food served. Try the local beer—it is brewed in the building next to the marina.



The beach bar at Stokkøya Sjøsender, 10 minutes' walk from Stokkøy Marina.

## Stokkøy Båtforening (Flatholmen)

64°02.16' N, 09°59.54' E

Last Visited: 2016

[Google](#)

The pontoons at Stokkøy Båtforening, looking south.

This is a small well-sheltered and quiet marina just SW of Harsvika.

Note the new 16 m high bridge between Stokkøya and Linesøya, 2 nm NW of the marina.



**Anchorage, Moorings:** Visitors' berths are on the outside of the outer pontoon.

**For The Boat:** There is water and electricity on the pontoons, included in the harbour dues.

**For The Crew:** There is a clubhouse with shower and laundry facilities. It is a 25-minute walk or a short boat ride to the food shop in Harsvika.

## Harsvika (SE Stokkøya)

64°02.5' N, 10°01' E

Last Visited: 2016

[Google](#)

Looking north at the pontoon outside the Harsvika shop and bunkering facilities.

**Anchorage, Moorings:** There is a quay with reasonable berthing and a pontoon outside the COOP grocery store. This is useful for shopping but exposed to the S and to wash from passing vessels.



A very snug option is the **Kuringvågen Marina** at Blindvågen, 1.5 nm to the SE, through the bridge with 30 m clearance that connects Stokkøya to Kjerkeholmen.

**For The Boat:** Diesel is available next to the shop; credit card only.

**For The Crew:** There are shops and a P.O.

**Things To Do:** There is a pub.

## Kuringvågen Marina (Blindvågen)

64°02.4' N, 10°03.7' E

Last Visited: 2011

[Google](#)

**Approaches:** To enter Blindvågen, the sheltered cove .3 nm E of Revsnes, from Stokksundet, pass either to the NE or SW of Langholmen and then pass E of the small island just N of the cove, to avoid a shoal to the SW of the island.

**Anchorage, Moorings:**

- Kuringvågen is a large pontoon complex run by Åfjordbåten Kystlag. S of the private fingerberths there is a 60 m long, deep water pontoon for visiting boats. Moor alongside. There is also one mooring buoy that may be available upon request.





Stokksundet Church (c. 1825), close to Kuringvågen Marina.

→ It is also possible to anchor in the cove at Revsnes in 20 m depth, with good holding and swinging room.

**For The Boat:** Kuringvågen Marina has water and electricity on the pontoons.

For information on leaving your boat at Guttelvik Næringspark in Revsnes for the winter, see Boat Storage Facilities in the Appendix (Volume I).



Kuringvågen Marina, looking northeast through the approaches.

**For The Crew:** At Kuringvågen Marina there are toilets, showers (for a fee) and laundry (for a fee) facilities in the clubhouse. There is a shop with a P.O. at Revsnes, 10 minutes' walk from the marina.

**Things To Do:** The Aquarius Brygge pub and restaurant is located right next to the marina. You can walk to the lovely Stokksundet church, which was moved from its original location at Kirkholmen to Revsnes.

## Sørkråkøya (S)

64°08.86' N, 10°09.45' E

Last Visited: 2013

[Google](#)

This is a small marina owned and run by a local boatclub. There are no facilities or clubhouse.

There is a salmon processing plant holding area in the marina, therefore this is a zero discharge zone. There is some noise when the boats deliver salmon.

**Anchorage, Moorings:** The triangular pontoon SW in the marina is dedicated for visitors.

**For The Boat:** Water and electricity are available on the pontoon. Fuel is available a short distance NE from the marina in a red boathouse. It is self-service, card only. Our contributor suggests you walk to inspect the facilities prior to going by boat.





**Things To Do:** There is nice walking on the island.

## Roan (NE Berfjorden)

64°10.8' N, 10°12.5' E

Last Visited: 2013

[Google](#)

DNL, Vol. 4, sketch map

**Anchorage, Moorings:** There is good holding in firm sand in 9 m depth in the well-sheltered area behind the mole extending N from Meholmen.

There are two mole harbours inside the bay but both are active fishing ports and do not seek visitors. There are visitors' berths at Kråkøy Marina, Hongsand, 2 nm SW.

*S/V Milvina* anchored off the mole harbours at Roan.



**For The Crew:** There is a grocery store with a limited selection.

## Annsteinsundet (W Værøya)

64°11.70' N, 10°04.15' E

Last Visited: 2014

[Google](#)

This is an exquisite little community on a small island in the archipelago of Almeningsværet.

**Approaches:** The Annsteinsundet sailingclub pontoons are located just S of the 13 m high overhead power cables in Annsteinsundet, the passage between Annsteinen and Værøya. Approach from the S is not limited by air draft.

**Anchorage, Moorings:** Tie up to a pontoon in the sailingclub if available. Alternatively, anchor in Annsteinsundet, a charted anchorage.

**For The Boat:** Electricity is available on the pontoons.

**Things To Do:** There is limited but pleasant walking through the community and around the island.

## Bessaker

64°14.9' N, 10°19.2' E

Last Visited: 2016

[Google](#)

DNL, Vol. 4, aerial photo

[Website](#)

This is a useful stopover very near the main passageway.

Note that a mole connecting Løaholmen with the mainland was completed in 2012 and a new marina inside the mole, Vikbukta, was completed in 2016.

Bessaker hosts a popular annual fishing competition the 3rd weekend of July.







Kaura Lighthouse in the offshore approaches to Bessaker, looking southeast.

Looking northeast over the old visitors' pontoon next to the shop in Bessaker.

**Approaches:** From Kaura Lighthouse, 5 nm WSW, the windmill farm above Bessaker is conspicuous in good visibility. Entry to the bay from here is clear.



**Anchorage, Moorings:** Vikbukta, the new marina .7 nm NE of the village harbour, has a well-sheltered solid new guest pontoon, though in bleak surroundings. The old guest pontoon in the village harbour is still in place, though reduced in size, but is exposed to NE winds and only suitable in settled weather.

**For The Boat:** Water and electricity (for an extra charge) are available on the pontoon and diesel is available.

**For The Crew:** Bessaker has a shop with a P.O.

**Things To Do:** There are paths up to the windmill farm and an associated visitors' cabin with panoramic views. The paths are not marked and not easy to find—enquire locally.

## Sørjervågen

64°16.30' N, 10°24.50' E

Last Visited: 2014

[Google](#)

**Approaches:** Enter Sørjerfjorden from the NNE, leaving Skjærbaken (covered at HW) to starboard, or enter from the NNW passing between the perches on Skjærbaken and Kvalen.

Note the 25 m overhead cable in the entrance to Sørjerfjorden.

**Anchorage, Moorings:** Anchor in the middle of the cove with good swinging room and good holding.

**Things To Do:** There are great views from the top of the rock to the S of the anchorage.





## Grisvågen

64°17.02' N, 10°16.77' E

Last Visited: 2014

[Google](#)

The anchorage at Grisvågen, near Ytre Skjervøya/Indre Skjervøya.

Our contributors entered this lovely remote anchorage in gale force NNW winds and weathered a NNW Force 6, gusting higher, with no problems.



Despite a few boat sheds in the bay, this is a peaceful and scenic anchorage.

In SW winds, you may prefer to seek shelter in the mole harbour between **Indre and Ytre Skjervøya**.

**Approaches:** Enter from the S, passing between Tjeldholmskjæret and Indre Skjervøya.

**Anchorage, Moorings:** Anchor in 7 to 9 m depth, W of the private moorings. The holding is good and there are mooring rings ashore.

**Things To Do:** There are good views from the top of the rock hill on the S side of the anchorage.

## Ytre Skjervøya/Indre Skjervøya

64°17.7' N, 10°18' E

Last Visited: 2006

[Google](#)

DNL, Vol. 4, aerial photo

This is a small community with 20 permanent residents known as Skjervøya.

**Approaches:** Enter from the E, passing between Indre and Ytre Skjervøya.

**Anchorage, Moorings:** On the NE side of the mole there is a pontoon system with room for a 10 m long boat. The pontoon is marked *Gjestebrygge*. Alternatively, enquire about mooring at a private dock.



Looking north across the inner harbour at Skjervøya with the small guest pontoon in the foreground.

**For The Crew:** There is a shop with basic provisions open a couple of hours a day and when the express boat from Sandviksberget is in harbour.



## Vingsand

64°20.9' N, 10°27.6' E

Last Visited: 2009

[Google](#)

DNL, Vol. 4, aerial photo & sketch map

Vingsand is a small mole harbor 2.7 nm S of **Setervågen**.

**Anchorage, Moorings:** There are two small pontoons for visitors, one on the E side and one on the W.

**For The Boat:** Fuel is available and electricity is available for an extra charge.

**For The Crew:** There is a shop, toilets, showers, and laundry facilities.

**Things To Do:** The pub is open Friday, Saturday and Sunday evenings in the season. There is a small art gallery at the quay.

## Setervågen

64°23.7' N, 10°28.8' E

Last Visited: 2011

[Google](#)

DNL, Vol. 4, aerial photo & sketch map

Looking east over the floating pontoons at Setervågen.

This is a scenic mole harbour at the SW tip of a large mainland peninsula. Once a fishing harbour, it is now being developed as a resort.

**Anchorage, Moorings:** There is a floating pontoon.



**For The Boat:** There is a fueling station on the fishing quay and fuel is available in **Vingsand**, 3 nm SSW. Electricity (for an extra charge) is available on the wharf.

**For The Crew:** There is a new facilities building with showers, toilets and laundry.

**Things To Do:** A short walk to the top of the rocky hill, or toward the lighthouse, provides fine views. There is a restaurant that operates in the season.

## Småværet

64°26.3' N, 10°33' E

Last Visited: 2010

[Google](#)

DNL, Vol. 4, aerial photo & sketch map

This is a small village with a couple of permanent residents, which is busy in the summer with holiday makers. It is popular with local boaters due to the pleasant pub and small shop.

Sadly, much of the village, including the dock area, was badly damaged in a fire in January 2014. It is not clear when the harbour will once again be able to accommodate visitors.

**Approaches:** Approach from the NW, passing W of the small islands and the landfill. Once S of the small island Mauraan, head E and then N into the





Wall art at Brygga Pub,  
Småværet.

harbour. While there is a useful sketch in *Den Norske Los*, Vol. 4, there is sufficient detail in the chart for this approach.

The direct approach from the N is best left to locals.

### **Anchorage, Moorings:**

Moor at the council dock SE in the harbour or at the dock or pontoon in front of Brygga Pub where there is 3 m depth alongside (depending on availability during the rebuild after the fire.) Pay in the shop.



Småværet inner harbour with  
S/V Anna moored at the pontoon  
in front of the pub. Looking  
southwest.



**Things To Do:** Enjoy the pleasant Brygga pub and neighbouring small shop.

### **Hasvåg (Skutnesbukta)**

64°26.7' N, 10°35.4' E

Last Visited: 2010

[Google](#)

This is a small very crowded mole harbour that partially dries out at low tide. Probably useful only in an emergency.

Sadly, most of the buildings in the village were lost to a large fire in January 2014.

**Approaches:** There is a buoyed approach channel from the W and a marked approach from the N.

**Anchorage, Moorings:** It is possible to anchor just outside the moles in 8 m depth or you can tie up to a fishing vessel.

## Kvaløyseteren

64°28.55' N, 10°41.8' E

Last Visited: 2011

[Google](#)

DNL, Vol. 4, sketch map

Kvaløyseteren harbour, looking west/northwest through the mole entrance.

This is a small mole harbour in pretty surroundings.



Note that the area SW of Leiskjær Light (64°27' N, 10°32' E) may break dangerously when a swell is running.

**Approaches:** Approach from the W through the opening in the mole.

**Anchorage, Moorings:** Moor alongside the visitors' pontoon, which is the 25 m long pontoon at the end of the pontoon system. There is 3 m depth alongside.

Alternatively, you can anchor off the beach SE on Kvaløya, .5 nm SW.

**For The Crew:** Toilets, showers and laundry facilities are located in the clubhouse.

## Lauvsnes

64°29.95' N, 10°53.5' E

Last Visited: 2011

[Google](#)

DNL, Vol. 4, aerial photos

Lauvsnes is the administrative centre for the Flatanger municipality. It is a useful pitstop on the inner passage through the archipelago but best avoided in strong winds from the Wly quadrant.

**Approaches:** Approach from the NW with all hazards well marked.

If your air draught is under 15 m, you can approach from the NE under the 15 m high bridge and through the narrow but well-marked Toppundet.

**Anchorage, Moorings:** Moor alongside the new 100 m long pontoon, with more than 3 m depth alongside. In strong winds from the W enquire about mooring at the pontoon S in Lauvsneselva or anchor in the bight E of Lauvøyneset, .6 nm NNW.



The Lauvsnes visitors' pontoon, looking west.

**For The Boat:** Electricity, water and fuel are available.





**For The Crew:** Toilets, showers and laundry (for a charge) facilities are available at Stranda Båtförening, past the pub. There is a shop across the road from the pontoon.



The Lauvsnes visitors' pontoon, looking southeast.

**Things To Do:** Walk to Storfjellet for views of the town and skerries. The Zanzibar Inn serves food and liquid refreshments and might be a good place to enquire about where to observe the eagles for which the region is famous.

### Villa Havn (Villa/Værsøya)

64°32.7' N, 10°42.6' E

Last Visited: 2009

[Google](#)

This is the site of the first coal-burning lighthouse in Norway, built in 1839. At the time it was the only lighthouse N of Trondheimsfjorden.



S/V Anna alongside the wooden wharf at Villa Havn, looking north.

**Anchorage, Moorings:** There is a wooden wharf for visitors—the first wharf to starboard as you approach the sound between Villa and Værsøya. It is approximately 15 m long with 6 m depth alongside. There is also a pontoon suitable for smaller boats. Alternatively, you can anchor in the sound.

**Things To Do:** The old lighthouse is open to visitors for a small charge. For exercise you can walk to the summit of Villa (alt 108 m) for views of the skerries.



## Jensøya (E)

64°35.15' N, 10°49.8' E

Last Visited: 2013

[Google](#)

*S/V Milvina* anchored at Jensøya with the south entrance on the right side of the picture. Note the perch in the entrance.

This is a scenic anchorage in an area with many eagles.

**Approaches:** Approach from the SW or the N.

**Anchorage, Moorings:** Anchor in 8 m depth. There are mooring bolts ashore for shorefasts. Good holding.



**Things To Do:** There are mussels in a cleft on the W side of Jensøya.

## Utvorda

64°35.65' N, 10°57' E

Last Visited: 2010

[Google](#)

DNL, Vol. 4, sketch map

**Approaches:** Approach from the SW via the intricate inner passage through the Flatanger skerries. Or approach from the N from Foldafjorden, then SW through Vordsundet, passing E of the cairn and light on Leiholmen.

**Anchorage, Moorings:** There are three new pontoons. Smaller boats can berth at the fingerpier on the S-most pontoon; larger boats can moor alongside at the end of the pontoon where the depth is more than 3 m. Pay at Sjøbua Spiseri.

**For The Crew:** Toilets are located at the camp-site.

**Things To Do:** There is a BBQ site by the parking area on the docks. If you don't feel like cooking your own dinner, Sjøbua Spiseri is well-known

for their fish dishes. They also serve coffee and cakes.

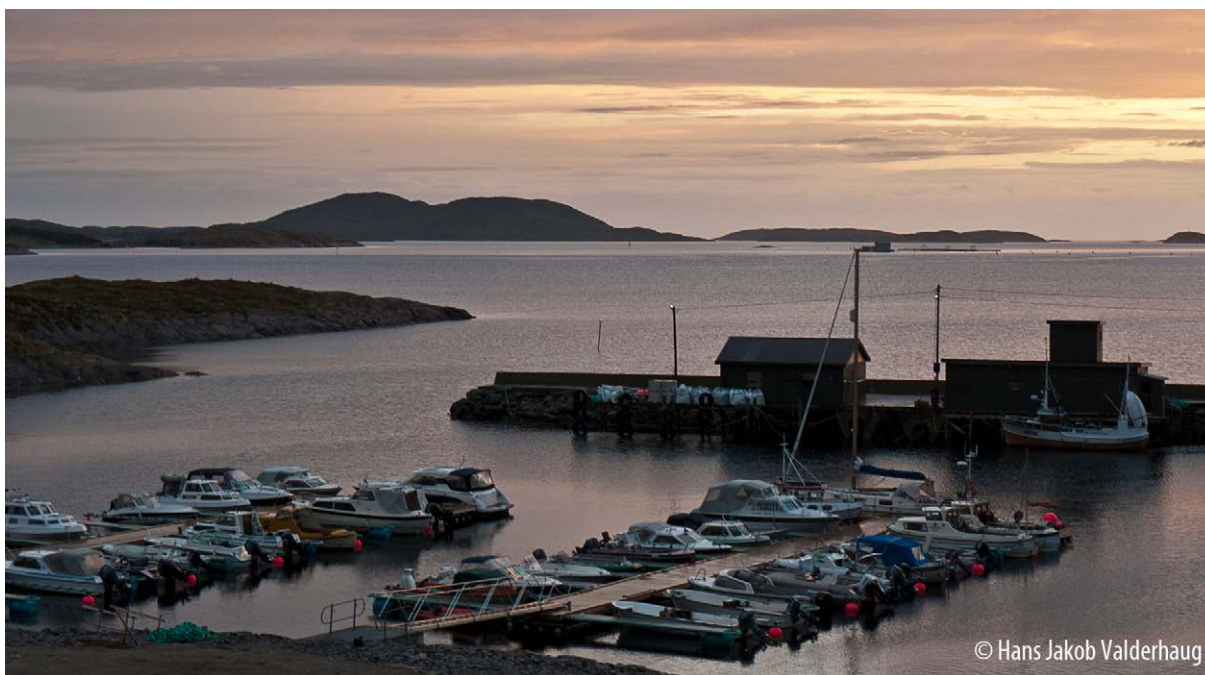
The path to Utvorda Festning begins at the docks. This is a large fort built for the occupying forces by Russian POWs during WWII. For a longer walk you can follow the sign to Fylkesvei from the gun emplacements. This makes for a 2-hour round trip, with the final 3 kms along a paved road.



Eli and Flatanger skerries seen through a gun emplacement opening.



Looking west over the harbour at Utvorda (previous page).



© Hans Jakob Valderhaug

## Hamnvika

64°36.15'N, 10°57.2'E

Last Visited: 2011

[Google](#)

*Ferie og Fritidshavner* (a cruising guide that is no longer published) and the chart disagree about the naming of this cove; on the chart this cove is unnamed and Hamnvika is used for the cove .3 nm N. We have decided to go with local usage as reported in F&E.

Note that this is a fair-weather harbour.



© Hans Jakob Valderhaug

Looking northwest over the visitors' pontoon at Hamnvika.

**Approaches:** Leave the perch at the harbour entrance to starboard.

**Anchorage, Moorings:** The trust Stiftelsen Utvorden Festning provides a 40 m long somewhat derelict visitors' pontoon with more than 2 m depth alongside at the outermost end but beware of shallow depths on the S side.

**Things To Do:** It is a 20-minute walk to **Utvorda**.



## Namsos

**64°27.98' N, 11°29.4' E**

Last Visited: 2011

[Google](#)

DNL, Vol. 4, aerial photos & sketch map

[Website](#)

Looking southeast over the visitors' pontoons at Namsos.

Namsos is a good-sized town with all facilities.

***Anchorage, Moorings:*** Namsos has a 50 m long floating pontoon for guests in front of the shopping centre as well as a few places in the small boat harbour. Note that both places are only suitable for shallow draft vessels.



## Brakstadvågen (NW Jøa)

**64°40.1' N, 11°12' E**

Last Visited: 2011

[Google](#)

Looking west over the visitors' pontoon in Brakstadvågen.

***Anchorage, Moorings:*** There is a 50 m long floating pontoon with guest spaces, but it is not advisable in strong N winds. Alternatively, there is good anchorage in the cove at the 10 m sounding, .25 nm W of the village.

***For The Boat:*** There is electricity on the pontoon (for an extra charge). There is a [sailloft](#) and chandlery 500 m from the harbour.

***For The Crew:*** There is a service building (for an extra charge). Supplies are available at Fosnes, 3 km away.



***Things To Do:*** There is a cozy pub in an old fisherman's hut, open in the season on Wed., Fri., and Sat.





## Abelvær (Litle Kalvøya/Kalvøya)

64°44.1' N, 11°11.2' E

Last Visited: 2009

[Google](#)

DNL, Vol. 4, aerial photo & sketch map

[Website](#)

Abelvær is located at the SW tip of a long string of islands running out from the mainland. Some people have found this an attractive stop, others not.

**Anchorage, Moorings:** Abelvær Båtlag provides a 50 m long visitors' pontoon in the mole harbour.

Upon request, large vessels may be able to moor along the docks SW in the sound between the islands. Alternatively, there are a couple of anchorages among the islands suitable in settled weather.

**For The Boat:** Electricity and water are available on the pontoon and a telephone number is posted regarding diesel.

**For The Crew:** There is a service building with toilets, showers, and laundry facilities. A small grocery store is located in the village, 5 minutes' walk from the harbour.



Looking south over the visitors' pontoon in Abelvær.

**Things To Do:** There is a fine beach nearby and a *café* in rather pretty old wooden buildings in the village. Norwegian author [Olav Duun](#) lived in Abelvær and the area hosts an Olav Duun festival every summer.

## Sør-Gjæslingan

64°44.5' N, 10°46.7' E

Last Visited: 2016

[Google](#)

DNL, Vol. 4, aerial photo & sketch map

[Website](#)

This is a very interesting historic out-island harbour. Once important in the cod fishery, with a population of 4000, it now has no permanent residents. It is, however, bustling in the summer, when the houses are occupied by holiday makers.

**Approaches:** The easiest approach is from the S, where Dørbrakan has a conspicuous perch with a knob on top. Leaving that to port and Kvernholmen with its cairn to starboard, will bring you into a well-marked fairway.



The Sør-Gjæslingan visitors' pontoon looking west. The new pontoon was moored alongside the old when this photo was taken.



The Sør-Gjæslingan  
visitors' pontoon looking east/  
southeast.



**Kristiansund to Rørvik**

**For The Boat:** Electricity may be available in the season, produced by a generator.

**For The Crew:** There are toilets by the shuttle boat docks on Flatholmen.

**Things To Do:** The old P.O. and shop, known as Woxengs samlinger, is open under the aegis of the Rørvik Museum. Guided tours of the old buildings may be available in the season.

## Nordøyan

64°48.4' N, 10°32.9' E

Last Visited: 2015

[Google](#)

DNL, Vol. 4, aerial photo

[Website](#)

This is a quiet and attractive harbour with a few summer residents, located 7 nm NW of **Sør-Gjæslingan**. It is impressive to note that the large SW mole was rebuilt in 1938 after a single storm demolished the old mole, which was the same size as the present one.

**Anchorages, Moorings:** There is excellent shelter in the harbour, which has a long guest pontoon with limited depth alongside, no cleats, and only a few rings to tie to.

It is also possible to hold your boat in place at the far S end of the harbour, with lines run ashore from all quarters, which is what we did.





**Things To Do:** Since the lighthouse on the SE island is now automated, there are no longer any year-round residents. If you wish to visit the lighthouse, you can dinghy around to the landing stage near the light; note that the N end of the lighthouse sound is shoal and the S end has only 2 m depth. It is interesting to see how the light accomplishes its unusual fixed and flashing pattern FFI 40 seconds.

During John Armitage's visit in May 2000 he was lucky enough to talk with a retired lighthouse keeper named Arvid Nygaard, who was on duty the night of 21 October 1962 when the Hurtigrute ship *St. Swithin*, en route from **Trondheim** to **Rørvik** in a SW gale, struck on Oksen, and sank a few cables NE, 3 nm SW of the lighthouse.

Their Mayday message gave a position SW of Gjeslengerne Light, which is 12 nm SE of Nordøyen, and it was not until the first lifeboat managed to get ashore at Nordøyen, 4 hours after the grounding, that Arvid was able to give the rescuers the correct coordinates for the wreck. There is a memorial plaque by the lighthouse. (The Norwegian book *Mayday fra St. Swithin* is interesting to look through even for those unable to read Norwegian.)

Looking north over S/Y *Sila* alongside the pontoon at Nordøyen.



© Christopher Barnes



## Bendslua

64°48.9' N, 10°38.4' E

Last Visited: 2008

[Google](#)

Looking west/southwest over the anchorage at Bendslua, with Nordøyan in the distance.

**Anchorage, Moorings:** You can anchor in this narrow slot between Benda, Hallarsøya and Storholmen in 4 to 7 m depth. You may wish to run lines ashore.



## Valøya

64°55' N, 10°47' E

Last Visited: 1996

[Google](#)

DNL, Vol. 4, sketch map

**Approaches:** Enter from the N, holding as far W as possible, in 3 m least depth, as shown on the sketch map in *Den Norske Los*, Vol. 4.

**Anchorage, Moorings:** Valøya is a mole harbour with good quays and a visitors' pontoon courtesy of [Valøya Båtförening](#).

**For The Boat:** Electricity is available for an extra charge.

## Borgan

64°57.98' N, 10°54.5' E

Last Visited: 2008

[Google](#)

DNL, Vol. 4, sketch map

**Anchorage, Moorings:** There is a floating pontoon or else you can anchor off the dock in 10 m depth.





## Straumsøya (E)

64°51.9' N, 11°16.1' E

Last Visited: 2007

[Google](#)

DNL, Vol. 4, sketch maps (see Rørvik)

**Anchorage, Moorings:** You can anchor in 10 m depth in thick kelp on loose sand in satisfactory holding in the anchorage on the E side of the island.

There is a second anchorage at the S end of the island (65°51.8' N, 11°15.6' E) where one contributor reports that the slope shelves more steeply than shown on the chart, making anchoring difficult.



The south anchorage at Straumsøya, looking southwest, with Rørvik in the background.

© Hans Jakob Valderhaug

Both anchorages are only large enough for one boat to swing at anchor. It is also possible to anchor to the W of Aunholman in 20 m depth, 1 nm N of Straumsøya.

## Rørvik (SE Vikna)

64°51.6' N, 11°13.7' E

Last Visited: 2016

[Google](#)

DNL, Vol. 4, aerial photos & sketch maps

There are Nature and Bird Reserves at Tjørnsøyvågen, SW Vikna; Borganøya and Frelsøya, NW of Vikna; and Kvaløya and Raudøya, N of Vikna.

**Approaches:** This substantial mole harbour is located .5 nm N of the bridge (41 m clearance) over Nærøysundet.

**Anchorage, Moorings:** Mooring for visiting boats is available alongside two pontoons N in the harbour, to port after the rescue boat station. Alternatively, you can moor to the outermost fingerberth at one of the pontoons further into the harbour. Pay at the honesty box on the wall of the clubhouse.

If full, enquire about mooring at the pontoon in the fishing harbour, in the SW corner of the main harbour, inside the berth for the fuel pump; pay the berthing fee at the metre.

The harbourmaster can be reached at Tel.: +(47) 64 51 11 13.

If you prefer to anchor, there are 2 anchoring possibilities at **Straumsøya**, 1 nm NE.



**For The Boat:** Water is available on the pontoons and there are a few electrical outlets. Fuel is available at the fuel pontoon in the fishing harbour using Norwegian cards and at the attended Minol facility N of the commercial wharves. The Minol facility has a small vessel pontoon with 6 m alongside at half-tide. As they are also a retailer for LPG Norge, you may be able to get your propane tanks refilled here.

Rørvik is home to Hansvik AS, who previously produced fibreglass boats locally. While their current series are produced in Croatia, they may be able to assist with repairs of fibreglass boats. There is a chandlery and diesel mechanic.

For information on leaving your boat here for the winter, see Boat Storage Facilities in the Appendix (Volume I).

**For The Crew:** The clubhouse has a toilet and, for a fee, laundry and showers. There are supermarkets, a P.O. and a bank. There is a bus to the national railway at Grong and an airport with flights to **Trondheim**.

**Things To Do:** The Nordveg Kystkultur Senter (coastal heritage centre), which opened in 2004, has an interesting exhibition.

The N-bound and S-bound coastal express ships (Hurtigrute) both dock here at the same time every evening, offering you an opportunity to compare the different generations of ships used.

If you are interested in ancient cave drawings, you may wish to visit the Rørvik Museum and get further information on the drawings at Solsemhola, which can be accessed from the anchorage at **Solsemvågen**, but only by prior arrangement.

Looking southeast over Rørvik harbour.



© Hans Jakob Valderhaug

The tourist centre has trail maps.

The museum has a restaurant that comes highly recommended.