



We have removed the West Coast of Sweden chapter from this volume because:

- It was a legacy from the 1986 1st Edition of the Norwegian Cruising Guide when there were no English-language guides to the Swedish coast. That is no longer the case.
- Our information was getting out-of-date with no plans to sail in Sweden anytime soon.
- Having a chapter on Sweden in a guide to Norway doesn't make sense.

We have provided you with a copy of this legacy chapter as a courtesy because you have bought our guide in the past. Please note that:

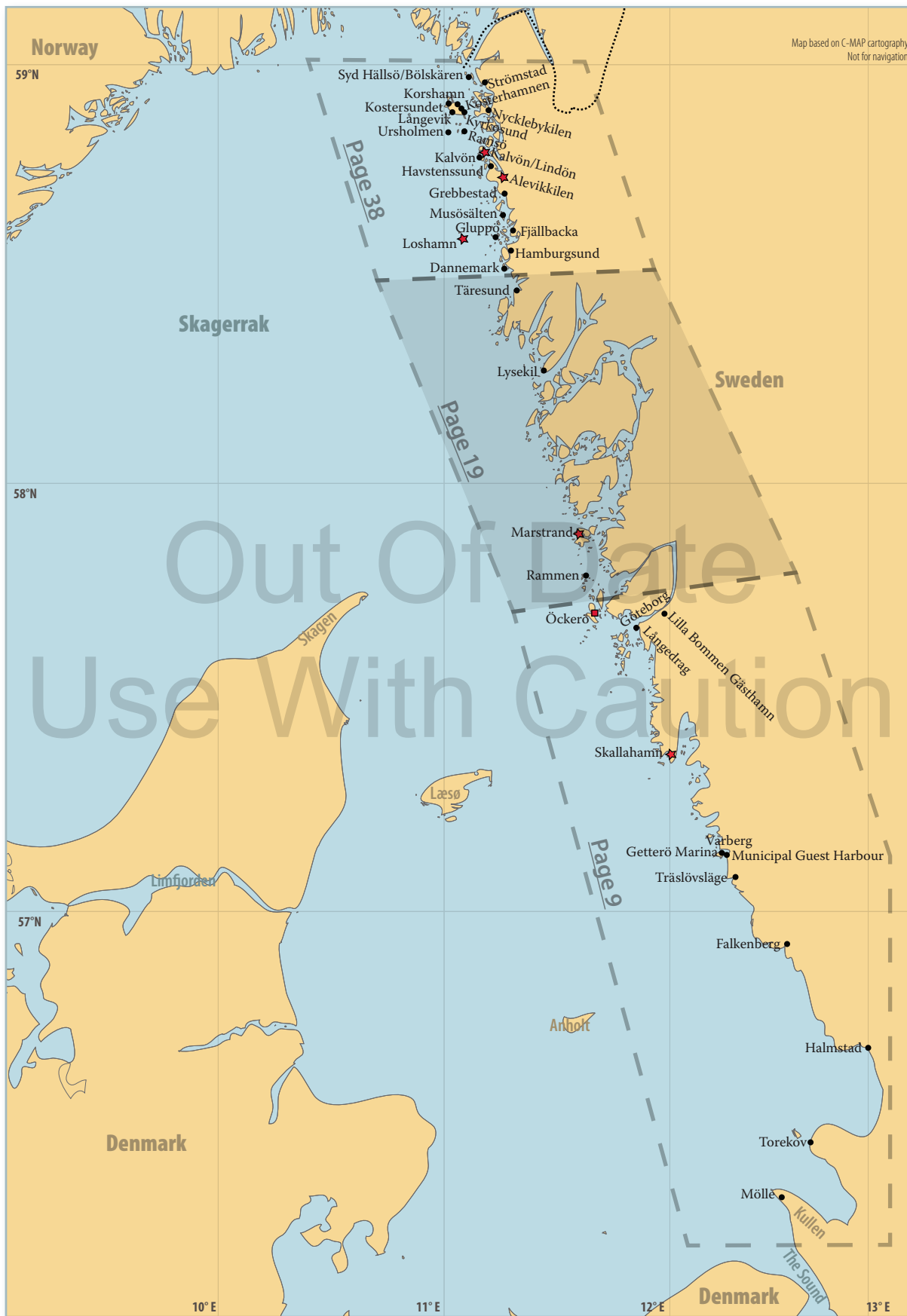
- **We no longer sell the guide as a PDF but it can be purchased from both [Apple iTunes](#) and [Google Play](#)**
- **We will no longer be updating this chapter.**
- **Some of the links do not work since it is no longer part of the parent book.**

Out Of Date

Use With Caution

This chapter has not been updated for years and should be used with caution.

Swedish West Coast





Charts

Swedish Charts at 1:50,000: 923 to 925, 931 to 936, 9312, 9313 and 9321; Norwegian Chart 1. Swedish Chart at 1:15,000: Kosters södra skärgård



Architecture at Torekov (above) and on the Härmanö side of Gullholmen (right).

The Swedish coast between the Sound and Varberg is rather bleak, although there are useful harbours a daysail apart, which we have described in this chapter. An alternative is to use the Danish island of Anholt as a stop-over on the passage between the Sound and the skerries south of Göteborg. Anholt has a large and very good harbour, one of Europe’s most magnificent beaches and really very little else—one of our favourites!

North of Göteborg most of the distance can be covered inside the *skärgård* (sheltering islands) with many different routes possible. This part of the coast is not unlike the Norwegian east coast, except that the islands are mostly bare and rocky, without the trees that are so much a part of Norway’s scenery.

To maintain consistency with the rest of the Guide, we have listed the harbours in order from south to north.

Landfalls and Favourites:

Öckerö makes a good landfall harbour after a crossing from Læsø, the Danish island at 57° 16’ N, 11° 00’ E, or mainland Denmark.

Our favourite harbours on the Swedish west coast depend on the season. In July and the first half of August (the main holiday season), anchorages such as Skallahamn, Tjuvsund, Kalvön/Lindön and Alevikkilen are good choices. Outside these few weeks we prefer to moor in the lovely small settlements of Gullholmen, Käringön and Smögen, or in settled weather between the islands at Loshamn in Väderöarna. Marstrand is worth a visit no matter what the season; however, in the main season try to arrive early in the afternoon for a berth at the main pontoon, or anchor in Utkäften and take the dinghy to Marstrand.



Mölle to Öckerö

Mölle

56°17' N, 12°29.55' E

Last Updated: 2011

[Google](#)

[Website](#)

The old bathing wharf at Ransvika, with Mölle harbour in the background.

This artificial harbour lies on the S side of the magnificent promontory of Kullen, some 2 nm ESE of its point. Mölle is a pleasant, typically Swedish village, looking freshly scrubbed and shining. It is only 16 nm from Elsinore (Helsingør) and 35 nm from Copenhagen.





Approaches: Coming from the N, remember that in good visibility Kullen looks like an island, as the land E of the W 4 miles is low lying.

Approach from well N of W, or in the white sector of the main light at night, to avoid the shoal that extends WNW from the pier. Its end is marked by a green buoy; once this is identified, pass close N of it and then steer straight for the pier head. Inside the pier, turn sharp to starboard into the harbour. Do not go beyond the smaller pier to the E as it is shoal inside.

Anchorage, Moorings: Moor alongside in the inner basin. If crowded, set an anchor from the stern and tie bow-to or look for vacant pile berths along the mole. Double berthing fees are charged if dues are not volunteered at the harbour office upon arrival.

Mölle harbour, looking southwest.



© Hans Jakob Valderhaug

For The Boat: Water and electricity are available on the dock. Fuel is available.

For The Crew: Toilets are open 24 hours and are well-maintained. WiFi is included in the harbour fee.

Things To Do: There are several hotels, restaurants and *cafés* to visit or you can shop at the gallery and pottery store. If you want some exercise there is a footpath to the lighthouse on Kullen. There are buses to the lighthouse in the season.

A short walk along the path to Kullen takes you to Ransvika, a bathing area used by generations of holiday makers. The *café* alone makes the walk worthwhile.

Torekov

56°25.7' N, 12°37.5' E

Last Updated: 2011

[Google](#)

[Website](#)

Torekov is a pretty but often crowded harbour, useful for those who wish to break the long passage N of **Mölle**.

The island Hallands Väderö, which lies at the entrance to Torekov, is a familiar name to Swedish mariners, as it divides coastal forecasting areas. Hallands Väderö is a nature reserve. Its west shore is out of bounds year round as a seal protectorate and there are several bird sanctuaries where seasonal restrictions apply. Anchoring is not allowed in the large bay on the SE shore (Stora Sandhamn).



Above: A small building on the docks at Torekov houses a large collection of name boards from ships that have wrecked on Hallands Väderö and surrounding shoals.

Right: Taken from the boat slip at Torekov, looking north over the small boat basin and out over the outer harbour and mole towards the entrance.

Approaches: The entrance, which lies E of the S end of Hallands Väderö, is well marked and lighted with two sets of leading lights at night. Enter by the buoyed channel and proceed into the inner harbour (depth 2.5 m).

Anchorage, Moorings: It is possible to moor between piles in the outer basin or, in settled weather, alongside the wavebreaker inside the E mole. The inner harbour is dredged to 2.3 m depth and there is alongside mooring. Pay parking-metre style.

For The Boat: Water, electricity and diesel are available.



For The Crew: There are toilets, showers and WiFi (for a charge).

Looking southeast over the visitors' berths alongside the wavebreaker at Torekov's outer harbour.



Things To Do: There are several restaurants and *cafés*. If you are interested in shipwrecks, there is a small maritime museum near the inner harbour, in the shape of the stern of a ship. There is also a large collection of name boards from ships that have wrecked on Hallands Väderö and surrounding shoals kept in a small building on the docks. You can visit Hallands Väderö on the small passenger vessel that runs from Torekov.

Halmstad

56°39.748 N, 12°51' E

Last Updated: 2020

[Google](#)

[Website](#)

[Website - harbour](#)

Halmstad is a lovely town at the mouth of the River Nissan and makes for a good stop between **Torekov** and **Falkenberg**.

A city with over 90,000 inhabitants, Halmstad is the seat of Halmstad Municipality and the capital of Halland County.

Approaches: Few off-lying dangers. A dredged channel leads from a safe water buoy to the harbour entrance. A well-marked channel leads past the commercial port on the starboard side and into the river.



Anchorage, Moorings: On entering the river the Halmstad Segelsällskap (HSS) harbour is immediately on the port side. Further up the river, on the east side, the local yacht club has narrow fingerpier berths facing the quay. Immediately downstream of those, below the large red crane, larger yachts can moor alongside the quay. Berths marked with green tags are available.

For The Boat: Water and electricity are available at both marinas. Pay at the machine.

For The Crew: Toilets, showers and laundry are available at both marinas. The codes change at noon each day. It is a 10-minute walk into the town from the yacht club, but about twice that from the HSS marina. All shopping is available. Halmstad has a train station on the line from **Göteborg** to Copenhagen, so is a useful place for crew changes. The train station is very close to the yacht club marina.

Things To Do: Halmstad is a pleasant town with some old buildings, restaurants, bars and *cafés*.

Falkenberg

56°53.8' N, 12°29.7' E

Last Updated: 2011

[Google](#)

[Website](#)

This is a rather commercial harbour at the mouth of the River Ätran, protected by moles and breakwaters. The town itself is a popular holiday resort.



Looking southwest over the yacht club pile berths at Falkenberg.

Approaches: All offshore hazards are well marked. There are several windmills on the N inner mole that make a conspicuous landmark and there is a sector light on the N mole. Two sets of leading marks (red triangles pointing towards each other) and leading lights lead through the opening in the mole. Proceed up the river past the shipyard, following the leading marks.

There is also an opening in the mole facing SE, used by locals.

Anchorage, Moorings: The yacht club located SE in the harbour welcomes visitors. Vacant fingerberths and pile moorings are marked with green tags. There are also several wooden docks where it is possible to moor alongside, both at the yacht club and further up the river towards the bridge.



For The Boat: Water, electricity and diesel are available at the yacht club.



Strolling the banks of the River Ätran makes for a lovely evening activity in Falkenberg.

the old part of town. If you would rather spend time in the water, there is a large beach S of the harbour.

If you are stuck in Falkenberg in bad weather, you may wish to watch the DVD *Farvel Falkenberg (Farewell Falkenberg)*, a critically acclaimed movie about coming of age in Falkenberg.

For The Crew: There are toilets, showers and laundry facilities at the clubhouse. There is also a clubroom with a TV, books and magazines. There are good shops, a bank and a train station.

Things To Do: There are restaurants and the museum is worth a visit. For a nice evening stroll, head up the S bank of the River Ätran, across one of the bridges up towards the power station, and then back down the N side of the river. You can finish up with a walk on the cobbled streets of



Träslövsläge

57°03.5' N, 12°16.1' E

Last Updated: 2011

[Google](#)

[Website](#)

This is a small fishing village and summer resort, and a pleasant suburb of **Varberg**. There is some surge here with W winds, when Varberg is a better choice.

Approaches: Enter past the outer breakwater and into the small boat harbour to starboard through a short well-marked channel. There is limited room to manoeuvre once inside the marina. Large vessels may wish to pass on into the main harbour or enquire beforehand about availability of docking space in the marina (Tel: +(46) 340 670707).



Looking northwest through the yacht harbour entrance at Träslövsläge.

Anchorage, Moorings: In the yacht harbour, moor alongside the dock by the restaurant, or look for a green tag at a pile mooring or finger-berth.

In the main harbour, berth as opportunity offers on the S or E side (the N side is shoal), probably alongside a fishing boat, or continue still farther into the inner harbour and berth where possible.

For The Boat: Electricity is available on the docks in the yacht harbour. There is fuel on the S quay of the main harbour. Fuel and water are available in the yacht harbour. There is a boatyard with a slip that can undertake engine and hull repairs.

For The Crew: Toilets and showers are available at the yacht harbour. There are some shops in the village and frequent bus service to Varberg where there is a wide selection of shopping.



Things To Do: There is a restaurant in the marina and a beach nearby.

A sailboat enters through the outer breakwaters at Träslövsläge. The entrance to the yacht harbour is on the left of the photograph.



Varberg

57°06.7' N, 12°14.2' E

[Google](#)

[Website](#)

The municipal guest harbour has a rather commercial character but is well protected behind double moles and is central to all facilities. Getterö Marina is in rural surroundings.

Approaches: Identify the light buoy WNW of Subbeberget Lighthouse. From here follow the well-marked fairway through the mole opening, which is marked by a double set of leading lights.

For the municipal docks, head NE keeping three green buoys to starboard and then take a 180° turn around the inner mole. For Getterö Marina turn to port after entering through the outer mole, and pass through one of two narrow openings in the wooden inner mole.

Varberg—Municipal Guest Harbour

57°06.6' N, 12°14.6' E

Last Updated: 2011

Anchorage, Moorings: Moor alongside the E side of the basin or look for a vacant pile mooring (identified by a green marker).

Looking southeast into the Varberg Municipal Guest Harbour.



For The Boat: Water and electricity are available.

For The Crew: There is a good service building including laundry facilities. There is a wide range of shopping. There is free WiFi at the library and at several *cafés*. There is ferry service to Grenå in Denmark and a train station.



Things To Do: There is a beach and a nicely restored old beach house with a sauna. You can walk the grounds of the old castle and there is a popular walk along the waterfront to the lighthouse.

Varberg—Getterö Marina

57°06.7' N, 12°13.8' E

Last Updated: 2007

[Website](#)

Looking northwest over Getterö Marina at Varberg, from outside the outer moles.

Anchorage, Moorings: Vacant pile berths are marked with green tags.



© Hans Jakob Valderhaug

For The Boat: Water, electricity and fuel are available. Eliasson boat yard and boat storage is located nearby and they stock some chandlery items. They also have a diesel mechanic.

Looking northwest over Getterö Marina at Varberg.

Things To Do: There is a restaurant, a BBQ area and a beach. From midsummer until the end of August



© Hans Jakob Valderhaug

there is a shuttle boat across the harbour to Varberg's inner harbour. The rest of the year it is a 5-km walk to the city centre.

Skallahamn

57°21.5' N, 11°59.5' E

Last Updated: 2011

[Google](#)

Looking northeast over S/V *Anna* tied to old mooring rings on the west side of the bay at Skallahamn.

This anchorage, known since ancient times, is protected from all directions except the S, and is subject to swell in SW gales.



© Hans Jakob Valderhaug

Approaches: Access is straightforward from the W and S.



© Hans Jakob Valderhaug

Old mooring ring at Skallahamn.

Anchorage, Moorings: The holding is good in 6 m depth, with a mud bottom. There are mooring bolts on shore and a SXX mooring buoy NW in the bay. Note that the moorings N in the bay are private.

Many boats prefer the anchorage just W of Skallahamn in the NW part of Malö Bay. A nice summer day will see 10 to 20 boats moored here with bows to the shore and an anchor from the stern. You may find better protection from the S in Malö Bay.

Things To Do: There is a small beach on the W shore.

Göteborg

[Website](#)

Göteborg is a nice town with all possible facilities and berthing possibilities in two locations: Långedrag and the Lilla Bommen Gästhamn.

For The Boat: If you need non-Swedish charts you can order online at Nautic. SeaSea chandlery at Redegatan 1 offers a 15% discount to mariners berthed at Långedrag.

For The Crew: Göteborg is a transportation hub for the W coast with trains, ferries, an international airport, etc. It's a good place to change crews and to clear Swedish Customs.

Göteborg—Långedrag

57°40' N, 11°50.7' E

Last Updated: 2021

[Google](#)

This protected artificial yacht harbour is the HQ of the Royal Göteborg Yacht Club.



© Hans Jakob Valderhaug

Looking west over the marina at Långedrag, Göteborg.

Approaches: The easiest approach is from the SW, leaving Smörbåden light to starboard.

Anchorage, Moorings: Moor with stern lines to mooring posts. Vacant spots are marked with green tags. Contact the marina at Tel: +46 (0) 703 399 398.



For The Boat: There is water and electricity on every pier and fuel in Hinsholmskilen, the next bay to the S.

For The Crew: WiFi is available for an additional charge. Groceries, bakery and a post-in-shop are available 20 minutes' walk away in the direction of the city centre. It is a 30-minute tram ride to the city centre.

Göteborg—Lilla Bommen Gästhamn

57°42.7' N, 11°57.9' E

Last Updated: 2009

[Google](#)

Though located right in downtown Göteborg, Lilla Bommen Gästhamn is better than might be expected. Like any inner city yacht harbour it gets sizzling hot on calm summer days but we have spent a very enjoyable week here early in June preparing for a transit of the Trollhättan/Göta canal system.



Looking east at Lilla Bommen Gästhamn, Göteborg.

Anchorage, Moorings: The marina is located on the S bank of the Göta River between the Göteborg opera house and the barque *Viking*. There is some wash from the ferries that come and go in the outer part of the harbour and some noise from traffic in the innermost part of the harbour. There is no anchoring in the harbour—you pick up fixed offshore lines (lazy lines) attached to the pontoon and use them to moor stern/bow-to.

The charge outside peak season is negotiable if you are planning a longer stay.

Contact the marina at +(46) (0) 31 15 40 05. Some berths can be pre-booked or through the GoMarina app.

For The Boat: Water and electricity are available. Electricity is an additional charge.

For The Crew: All facilities. The harbour is just a footbridge away from one of Göteborg's biggest shopping centres with shops to serve most needs, including a liquor store.

Öckerö (SE)

57°42.36' N, 11°39.70' E

Last Updated: 2015

[Google](#)

[Website](#)

This is a good landfall harbour after a crossing from Læsø, the Danish island at 57°16' N, 11°00' E, or mainland Denmark. All facilities are available.



Approaches: From offshore, Trubaduren Lighthouse (57°35.70' N, 11°38.00' E) is conspicuous and stands in clear water. Further approach is well marked and can be made in all weathers. The initial approach is the main passageway for ships to **Göteborg** and is used by large vessels that may have limited manoeuvrability. From the main passageway, head N in sheltered water inside the islands to Öckerö.

Guest berths can be found in Fiskehamnen, the fishing harbour.

Anchorage, Moorings: There are two visitors' pontoons for smaller vessels SW in Fiskehamnen. Larger vessels can moor alongside the large pontoon ahead and slightly to port on entry into Fiskehamnen. Both will accommodate deep draft yachts.

Boats with draft < 1.8 m may wish to consider Nimbushammen (run by the United Church of Sweden), .3 nm N of Fiskehamnen.



Looking north over Trubaduren Lighthouse in the approaches to Göteborg. Vinga Lighthouse is in the distance.



S/V Anna alongside the guest berth in Nimbushammen, at Öckerö, looking north.

For The Boat: Electricity (with a service card that can be purchased at the vending machine in the harbour office) and water are available on the pontoons and diesel is available in the harbour. There is a boatyard and a chandlery.

For The Crew: There is a service building in Fiskehamnen; entry cards can be purchased at the vending machine in the harbour office. There is bus and ferry service to Göteborg.

Things To Do: There are several restaurants close to the guest harbour. There are BBQ facilities on the quay.



Rammen to Tåresund



Swedish West Coast

Rammen

57°47' N, 11°37.9' E

Last Updated: 2011

[Google](#)

This island anchorage, some 12 nm from **Långedrag**, is very busy with day trippers, mostly in motorboats, and has a tricky approach.

Approaches: The leading marks (2), when approaching from the W, are barely visible. On transit from the NW, the marks (3) are visible, but this approach has less than 2 m depth. The SXX guide suggests that the easiest approach is to hug the S shore, where there is 2 m depth.

Looking east at the leading marks into Rammen anchorage. They're not exactly obvious!



© Hans Jakob Valderhaug



Anchorage, Moorings: Anchor from the stern with lines to mooring bolts ashore. There is 2 m depth on the W side of the inlet. There is no room to swing at anchor.



Looking north over Rammen anchorage.

© Hans Jakob Valderhaug

For The Crew: There are basic toilet facilities and garbage disposal.

Utkäften (S Klåverön)

57°51.7' N, 11°35.2' E

Last Updated: 2011

[Google](#)

This is our preferred wild anchorage in the **Marstrand** area.

Approaches: Entry from the SW is easiest: After leaving the red buoy .4 nm SE of Ramholmen to port, head towards the S tip of Karlsholmen and you will avoid the charted shoals.



Looking north over Utkäften anchorage with Marstrand's Carlsten Castle in the background.

© Hans Jakob Valderhaug

Anchorage, Moorings: There is a large area for anchoring and many mooring bolts ashore. The anchorage is exposed to the SW.

Larger boats will prefer to anchor further out in the bay. Smaller vessels may wish to go right in to the NE end of the bay. Watch out for a 1.5 m shoal just S of the two small islands N in the bay. Passing E of this you will have an exposed rock near the E shore of the bay. It is possible to get right inside the NE end of the bay by passing between these two obstacles. Anchor in 4 to 6 m depth; mud bottom.

For The Crew: There are basic toilet facilities and garbage disposal.



Things To Do: There are sand beaches to explore.

Marstrand

57°53.1' N, 11°35.25' E

Last Updated: 2015

[Google](#)

[Website](#)

Looking southeast over Marstrand harbour.



This is a protected and popular harbour in a sound. If you only choose to spend money on one *gästhamn* (guest harbour), this is not a bad choice. It is wise to arrive not too late in the afternoon as space may be hard to come by, especially when the large regattas are taking place.

Keep an eye out for the blue Linfärge, a ferry that does not have its own propulsion but crawls on a big wire that runs across the sound. The wire quickly drops to the bottom as the ferry crosses, but it is necessary to keep from crossing its path while it is underway.

Approaches: Approach from the N or S. If coming from seaward, the tower of Carlstens Festning, W of the town, is a conspicuous landmark.

Anchorage, Moorings: The guest harbour on the W side of the sound (Marstrandsöen) will accommodate more than 200 boats. There is no anchoring allowed; rather, there are heavy mooring lines to the docks that you take to your transom as a stern mooring (lazy lines). There are also some fingerberths that it may be possible to reserve (see their website). In strong W or SW winds avoid the S-most dock if possible.

The nearby harbours of Åstol and Dyrön offer more peace and quiet at the same price.

For The Boat: Electricity is available on the dock.

Fuel is available from the small basin S of the ferry stop on the E (Koöen) side. Rutgerson Marin (Swedish deck gear manufacturer) has its production facilities on the Koöen (E) side of the sound.

For The Crew: All facilities. The best food shopping is on the E (Koöen) side. It is possible to buy alcohol if you order 24 hours in advance. There is an



Looking south over Marstrand harbour, taken from Koöen.

The old fort at Marstrand, looking northeast.



ATM on the E side of the inlet. You can take the Linfärge across and pay on the way back.

Things To Do: There are lovely old buildings to see and the old fort is worth a visit. There are plenty of pubs and *cafés* and yachty clothes stores.

Söholmen (N Instön)

57°54.4' N, 11°38.5' E

Last Updated: 2011

[Google](#)

This anchorage is well protected from the prevailing summer winds (NW to SW).

Approaches: Coming from the W (the passage to the E of Instön requires passing under an 18 m bridge), you will pass the small lighthouse and the small islands of Nordholmarna. You will then see the three blue SXX buoys SW in the bay. Head SW, keeping the small round island of Tärneskär to port.

Looking southeast over the anchorage at Söholmen on Instön. The sailboat is moored on one of the three SXX buoys.



Anchorage, Moorings: Anchor in 5 to 8 m depth in rather loose mud. In N winds, the anchorage approximately 5 nm further SW at **Utkäften** is preferable.

Stenungsund

58°04.2' N, 11°48.9' E

Last Updated: 2012

[Google](#)

[Website](#)

Tjörn rundt, the W coast's largest racing event, begins and ends here.

Approaches: If your boat's vertical clearance is less than 21 m (the clearance at the bridge between Orust and Mjörn), the approach between Orust and Tjörn is the preferred one due to the lovely scenery. Otherwise, if your vertical clearance is greater than 21 m, you can approach from the S, passing under the bridge between Almoen and Kalloen with a vertical clearance of 43 m, and then entering Stenungsund from the N (note the bridge with 13 m vertical clearance that crosses Stenungsund, blocking direct access from the S).



Anchorage, Moorings: Spaces for visiting boats are found NE in the harbour in the nook by the shopping centre. Tie up bow-to with a stern line to a mooring buoy.



Looking south down the sound at Stenungsund.

© Hans Jakob Valderhaug

For The Boat: Water, electricity and diesel are available.

Gasoltankning at Verkstadsvägen 5, though developed to provide propane for cars, also states they can fill marine propane tanks. Primagaz at Kraftverksvägen, a 30 min walk out of town, used to be able to fill propane and butane tanks but we have no recent information on this.

For The Crew: There are toilets and showers at the dock. There's a wide range of shopping in the town and rail connections.

Slubbersholmen/Mollön

58°03.8' N, 11°27' E

Last Updated: 2011

[Google](#)

This is a wild anchorage in a bay on the W coast of Mollön, sheltered by the smaller island of Slubbersholmen. Note that strong W winds would make this anchorage untenable.



Looking south over the anchorage at Slubbersholmen/Mollön.

© Hans Jakob Valderhaug



Approaches: Approach from the W, passing N of Slubbersholmen.

Anchorage, Moorings: Anchor in 10 m depth in good holding in mud. In W and NW winds go as far N in the bay as possible; swinging room here is limited somewhat by the 3 SXX mooring buoys. There are mooring bolts ashore.

For The Crew: There are basic toilet facilities on Slubbersholmen.

Things To Do: There is a little sandy beach at the E end of the N Slubbersholmen shore, popular with children (of all ages...).

Käringön

58°06.75' N, 11°22' E

Last Updated: 2011

[Google](#)

[Website](#)

[Website - harbour](#)

This is a delightful small offshore island harbour that is very crowded in high season. The inner harbour provides full shelter but the outer pontoon harbour is exposed to N winds.

Approaches: If approaching from seaward, pass close S of Måseskär (marked with a *kummel*) and steer NE for the first buoy of the well-marked channel. The entrance to the inner harbour is narrow, facing N into protected water, but if it is blowing hard from that direction, enter slowly under engine as there is often no room to manoeuvre and it can prove difficult to stop.

Looking northeast over the pontoons at Käringön.



© Hans Jakob Valderhaug

Anchorage, Moorings: A large pontoon with mooring buoys for stern/bow lines is in place N of the inner harbour. There is mooring on both sides but the outside (the NE side) is exposed to winds from the N.

There is also some space in the old inner harbour basin, beyond the berths for the express boat and rescue vessel. The harbourmaster allows



rafts of up to 4 boats before putting up a sign marked *Fullt* and placing red tape on the outermost boat.

Anchoring is possible in the bay, depending on wind direction. Note the clearly marked submerged pipe.

For The Boat: Water and electricity and some chandlery items are available. There is a pump out station.

For The Crew: There is a service building including laundry facilities. There is a shop, a fish store, a hostel and a hotel. There's an express boat to Hälleviksstrand.

Things To Do: You can eat and drink at a number of pubs and *cafés* and a couple of gourmet restaurants—the most famous one being Peterson's Krog.



Grindebacken (E Härmanö)

58°09.3' N, 11°23.5' E

Last Updated: 2011

[Google](#)

Härmanö is quite a large island, with **Gullholmen** being the major settlement on its NE shore. Grindebacken is a very small settlement on its E shore and this anchorage is just S of the village. **Käringön** is just 2 nm S.

Anchorage, Moorings: This anchorage is well protected, except from the NE, with good holding, except for in the very SW part of the bay where it is shallow with sea grass and poor holding. (Swedish W coast sailors seem very fond of Danforth-type anchors and this type of bottom probably explains why.)

The area around and NE of the blue SXX buoy is well suited for anchoring. Anchor there in 4 to 8 m depth; mud bottom.

Looking south over the anchorage at Grindebacken.





Gullholmen (NE Härmanö)

58°10.7' N, 11°24.3' E

Last Updated: 2011

[Google](#)

[Website](#)

Looking southeast out of the harbour at Gullholmen.

Gullholmen is the oldest fishing village on the Swedish W coast. It is very pretty and the harbour in the village is very full in the summer season. The island of Orust (to the East of Gullholmen) is home to many Swedish boat builders.



Looking northwest over boats moored Scandinavian-style in Gullholmen harbour.



Swedish West Coast

Use

Caution

Anchorage, Moorings: Enter the main harbour through the narrow opening N of the mole. At the pontoon for visiting boats, moor bow-to with an anchor from the stern in season or alongside out of season. There are some mooring buoys for stern lines inside the S mole. The harbourmaster can be reached at +(46) (0) 702 09 8802.

If there's no room here, the anchorage at **Grindebacken** is an alternative, 1.3 nm S of the village.

For The Boat: Water and electricity (for an extra charge) are available. There is a pump out station. All other facilities are available at Ellös, 2 nm ENE.

For The Crew: There are toilets, showers and WiFi.

Things To Do: The museum near the S end of Gullholmen is worth a visit. There is a pub and restaurant and walks on Härmanö.



Gullholmen basement door.



Knarrevike Kile

58°16' N, 11°33' E

Last Updated: 2013

[Google](#)

Looking southeast at S/V *Anna* anchored at Knarrevike Kile.

While not particularly attractive, this inlet does offer excellent protection from all wind directions.

Approaches: Approach from the SE through Rörbäcke Kile where there are SXX buoys in the W arm of the bay.

Anchorage, Moorings: Anchor in 3 to 4 m depth in soft mud along the W shore of the bay, the E shore being more private due to summer homes. There are two charted cables in the bay: one where the bay is at its narrowest and the other further N.



© Hans Jakob Valderhaug

Bassholmen (NE)

58°14.52' N, 11°30.42' E

Last Updated: 2013

[Google](#)

[Website](#)

This is a popular harbour in the intricate passage between Skaftölandet and the mainland. The old boatyard and docks are in use by [Föreningen Allmogebåtar](#), a volunteer organization caring for smaller wooden workboats.

Bassholmen is a nature reserve.

Approaches: Approach from the N under the 16 m high bridge; from the E through Strömmarna (The Currents); or from the S through the narrow but well-marked passage between Skaftölandet and Flatön.

Anchorage, Moorings: Moor to the quay in front of the boatyard—in high season with an anchor from the stern—with > 2 m depth in most places. The small inner basin E of the buildings is shallow and usually occupied by traditional craft.

There are anchorages to the E of the island; SXX buoys limit swinging room.



© Eli Husum

Looking southwest over the docks at Bassholmen.

For The Boat: Electricity is available on the dock for an extra charge.

For The Crew: There is a new service building and a seasonal kiosk.

Things To Do: The boatyard has many small traditional craft on exhibit and still builds and restores wooden boats. If you are lucky you may get one of the old-timers to show you around. Föreningen Allmogebåtar pub-





lishes a series of leaflets on wooden boats. While the text is all in Swedish, lovers of traditional craft may find these interesting.

There is nice walking in the area.

Fiskebäckskil

5814.6' N, 11°27.7' E

Last Updated: 2011

[Google](#)

Who can resist a marina with the name Lyckans Slip (The Boatyard of Happiness)? Nestled below the old church and graveyard the harbour is as scenic as it is peaceful. The old village of Fiskebäckskil has many nicely restored buildings and is today a popular summer resort.

Approaches: Approach from the N, passing either side of Mansholmen.

Looking northwest over Fiskebäckskil harbour with Lysekil in the far background.



Anchorage, Moorings: Lyckans Slip is SW in the bay. The N side of one of the pontoons is reserved for visitors and is clearly marked. Lazy lines are provided.

For The Boat: Fuel, water and electricity (for an extra charge) are available. Some chandlery items are available. There is a full-service boatyard with a diesel mechanic.

For The Crew: There are some groceries in the *café* and a grocery store and small bakery a 10-minute walk from the docks. There is bus service to Uddevalla, and a small ferry to **Lysekil**.

Things To Do: With a *café* on the docks, a couple of pizzerias, and a restaurant at the conference centre, there are many opportunities to eat out. To burn off those calories, you can walk the narrow, cobbled streets, ending up on Softeberget to watch the sunset in the Kattegat. Or, for the more ambitious walker, there is a marked foot and cycle path to Grunnesund (part of Kuststigen Bohuslän). If you just feel like sitting, there is a beach.

Tjuvsund

58°15.8' N, 11°29.6' E

Last Updated: 2011

[Google](#)

While the Bohuslän coast is an excellent cruising ground, it does tend to get crowded in high summer. This anchorage is a bit off the beaten track and offers all-weather protection and usually room to swing at anchor—a rarity in these parts in July and early August.



Approaches: Approach from the S through the narrow inner passageway and under the 16 m high bridge. If approaching from the N (no height restrictions), pass E of Lindholmen. The final approach is N of Kedholmen.



Looking east over the anchorage at Tjuvsund. The boat furthest away is tied to the SXX mooring buoy.

Anchorage, Moorings: There is a large area with 3 to 5 m depth W of the SXX mooring buoy. Good holding in mud.

Lysekil

58°16.3' N, 11°26.4' E

Last Updated: 2012

[Google](#)

[Website](#)

Lysekil is a major port with all the facilities of a larger town. In 1990 there was a large fire aboard the *Scandinavian Star*, one of the ferries passing between **Oslo** and Copenhagen. Despite a massive rescue operation, 159 people died in the fire, and the tragedy is still a riddle for Norwegian and Danish investigators. The ship was towed to Lysekil, and for many the name of this port brings back pictures of the still-smoking ship docked here.

Looking southwest over Fiskhamnen, Lysekil with Fiskebäckskil in the background.



Approaches: From the sea the approach is straightforward and the town is easily identified by its tall church spire.



Anchorage, Moorings: There are three places with guest spaces in Lysekil:

- Fiskhamnen is the fishing harbour but is used as a visitors' basin during the high season. Lazy lines are provided, with a few alongside berths. This basin is well sheltered behind the mole, hence very popular.
- Nordhamnen is a new pontoon marina approached from the Saltöfjord. It is sheltered inside a wavebreaker. Lazy lines are provided.
- Havsbadet, to the S of the town, has two basins with guest spaces.

Pay with a bank card in the machine provided.

ed.

Other options, preferable in strong Wlies, would be the marina Lyckans Slip in the quaint town of **Fiskebäckskil** across the bay to the S or the anchorage at **Tjuvsund**.

For The Boat: Fuel is available in Fiskhamnen and Nordhamnen. The fuel outlet in Fiskhamnen has Campinggaz® cylinders (probably due to business from camper vans). Drevia boatyard by Fiskhamnen has a 50-ton hoist. There are many boatyards in the vicinity.

Looking east over Nordhamnen, Lysekil. Visitors' berths are alongside the wavebreaker.

Looking north over Havsbadet, Lysekil. The cathedral is in the background and the open air bath is in the foreground.





Things To Do: There is a nice walk around the small peninsula Stångenes Huvud, a nature reserve. Or you can walk to the old tower for views of the cathedral and parts of the town. There is an aquarium. If you build up an appetite there are numerous restaurants and pubs in the town.

Lilla Kornö

58°18.5' N, 11°22.05' E

Last Updated: 2015

[Google](#)

This pleasant little fishing village is inhabited only in the summer.



Looking north/northwest over the harbour at Lilla Kornö.

© Hans Jakob Valderhaug

Anchorage, Moorings: Enter between the moles. There are mooring buoys on the N side of the harbour; use a kedge anchor if mooring on the S side.

There is also a small harbour N on Stora Kornö, 4 nm SE of Lilla Kornö. Tie alongside the inside of the N mole.

For The Boat: Electricity is available on the S dock. Water is available from a pump in the village, drawn from a well. If possible, it is better to get water elsewhere.



© Hans Jakob Valderhaug

For The Crew: There are showers and basic toilet facilities 200 m S along the path.

The small mole harbour at Stora Kornö, looking northeast towards Lilla Kornö.

Karlsvik or Näverkärrenskilen

58°20.7' N, 11°22.5' E

Last Updated: 2009

[Google](#)

This anchorage is located at the entrance to the Brofjord, N of Lysekil. It is our favourite anchorage between Göteborg and Smögen, despite its nearness to the oil refinery on the other side of the Brufjord. The area around the bay has been farmed since the 1500s.

Näverkärren is a nature reserve and the bay to its S is called Näverkärrenskilen by sailors and locals but Karlsvik by the authorities who make the charts.



Approaches: The bay is entered from the SE and protected from the S by the small island Grötö. You pass E of Grötö to enter the anchorage. Further protecting the anchorage to the W is a narrow piece of land named Sladholmerna—a bit confusing as it is actually connected to the mainland and not a separate *holme* (rock).

Anchorage, Moorings: Anchor in mud with grass in 3 m depth in Karlsvik itself, off the sandy beach, or use some of the mooring bolts in the Grötö/Sladholmerna/Karlsvik basin. It is somewhat exposed in SE winds. In S and SW winds you will find the best protection in the bight N of Grötö and E of Sladholmerna—these almost connect and provide excellent protection.

Looking south over the anchorage at Karlsvik, also known as Näverkärskilen.



Things To Do: There are nice walks ashore and a beach.

Malmö

58°20.9' N, 11°20.7' E

[Google](#)

There are two harbours in the village on Malmö's E side. Large boats will prefer the ease of the marina pontoons at Malmö Marina. If comfortable with mooring Scandinavian-style, boats < 35' in length will find excellent protection in the peaceful old fishing harbour.

Looking northwest over Malmö Fishing Harbour with the Malmö Marina at the top right of the photograph.



For The Crew: There is basic shopping in the village.



Things To Do: There are restaurants by the marina.

If you are interested in a swim, there are lovely small beaches on the E coast and it is possible to swim from the flat rocks on the W shore.

The Bohuslän Kuststigen (coastal path) runs around the S side of the island through a landscape that varies from lush forest to barren quarry remains.

Malmö—Marina

58°21' N, 11°20.6' E

Last Updated: 2007

[Website](#)

Approaches: The approach is straightforward from the E.

Anchorage, Moorings: The marina has a large pontoon complex with some T-berths. You may also moor outside the wooden wave breaker but expect some wash here.

For The Boat: There is water and electricity on the pontoons and diesel N of the pontoons. The yard has lift out facilities.

Malmö—Fishing Harbour

58°20.7' N, 11°20.7' E

Last Updated: 2007

[Website](#)

Approaches: Malmö Fishing Harbour is located in the N bight between Malmö and Kalven. Approach from the NW, passing **Malmö Marina**. There are spaces for visiting boats in the approaches but the best protection is found inside the harbour itself.

Anchorage, Moorings: Moor bow-to the well-padded concrete docks with a stern anchor. Alternatively, you can moor alongside the wooden docks in the approaches.

For The Boat: Electricity and water are available.

Keö

58°21.9' N, 11°19.7' E

Last Updated: 2007

[Google](#)

This is a useful anchorage near the main passageway and with less traffic than the area around **Langö/Hampholmarna** and **Smögen**.

Approaches: Approach from the SE, rounding Björnholmen and passing between the red and green perches into the anchorage.

Anchorage, Moorings: Anchor in 4 to 5 m depth NNE of Keö, noting the blue buoy



© Hans Jakob Valderhaug

reserved for SXX members. The SXX guide describes the holding as poor here for plough-type anchors but we have not experienced this.

For The Boat: All facilities can be found at **Malmö Marina**.

Things To Do: There is walking ashore on Keö if you don't mind the rather ample 'left-behinds' from the grazing sheep and cattle.

Looking north into the anchorage, taken from the island of Keö.



The beach by the anchorage is soft mud; the beach NE on Keö is more appealing.

Langö/Hampholmarna

58°20.9' N, 11°16' E

Last Updated: 2003

[Google](#)

Looking northeast over *S/V Anna* moored alongside the rocks at Langö/Hampholmarna. The main passageway along the coast passes between the rocks and the settlement of Fisketången, which can be seen in the background.

The area around **Kungshamn** and **Smögen** is one of the busiest on the Swedish W coast in the summer season. This handy anchorage, located between Langö and Ampholmarna, is near the settlements yet away from the crowds. Langö (meaning long island, of which there are many in the Swedish Archipelago!) is located 1 nm ESE of the town of Smögen. Ampholmarna are small islands/large rocks.



© Hans Jakob Valderhaug

Approaches: Enter from the NE.

Anchorages, Moorings: There are anchorages on both sides of the small promontory inside Ampholmarna. There is room to swing at anchor but most boats choose to pass a line ashore. There may be some wash from passing boats.

Smögen

58°21.2' N, 11°13.3' E

Last Updated: 2020

[Google](#)

[Website](#)

Smögen, 1 nm to the W of **Kungshamn**, is a famous and picturesque fishing town located S on the island of Hasselön, which is connected to the mainland by a 26 m high bridge. Since the outside of Hasselön is rather exposed, hundreds of boats pass under the bridge daily in the summer.

If carrot juice, Brahms violin concertos and uninterrupted sleep are your thing, Smögen in peak season is not your harbour. If you are young in body or heart, it may be just what you are looking for: This sleepy fishing harbour attracts a young and thirsty crowd in summer.

Approaches: Enter the narrow sound between Hasselön and Kleven from the E.

Use with Caution



Above: Hällö Lighthouse in the approaches to Smögen, looking northwest on a calm day.



Above: Pengeskjärbådan light with Hällö Lighthouse in the background, looking south from Kleven, Smögen, on a blustery day.

Right: Looking west/northwest over boats berthed alongside in Smögen during the quiet season. In summer you are required to use the lazy lines supplied.

Anchorage, Moorings: This well-sheltered harbour is in the narrow sound between Hasselön and Kleven. Visitors' berths are located on the N (Smögen) side of the sound, using lazy lines provided. Some berths can be pre-booked.

For the less party-hungry there are visitors' berths at the marina NE on Hasselön, immediately N of the bridgehead (Hasselösund Gästhamn). Or head for the nearby anchorages at **Keö** and **Langö/Hampholmarna**.

For The Boat: Diesel and water are available. There is a diesel mechanic, a sailmaker and a chandlery. Large boats can be hauled at Smögenvarvet (up to 30 tonnes by crane or 400 tonnes on the slip).

For The Crew: There are several shops and an internet *café* in peak season only.

Things To Do: There are several restaurants and night clubs.



Kungshamn

58°21.7' N, 11°14.8' E

Last Updated: 2020

[Google](#)

[Website](#)

Looking southeast over Kungshamn's guest harbour.

This is a protected harbour in a small village. Previously a centre for the large quarry industry in the islands, today it is an active fishing community supplying a substantial local canning industry. While reputedly quieter than **Smögen**, the berths are close to the restaurants and bars of a bustling summer town.



Approaches: From offshore, from a position E of Hällö Light, two orange beacons can be seen E of the conspicuous bridge. Keep these in line at



about 025° until the triangular marks W of the bridge come in line. Hold this new line until the harbour entrance opens up. Approach from the N is through the lovely and yacht-friendly Soten Canal (the bridge has no fixed opening hours but opens when a boat approaches).

Anchorage, Moorings: The S basin is for visiting boats and provides good shelter. Moor alongside or with a stern anchor as indicated. Berths are also located outside the mole, with finger piers or with a buoy for a stern line. Some of the fingerberths can be reserved. Pay parking-metre style.

One contributor reports that it is also possible to anchor S of Husholmen Island (note the charted underwater cable), about 1.3 nm N of Kungshamn, in 11 m depth with good holding in coarse sand. The anchorage is open to the W but provides okay shelter in light to moderate W winds.

Looking south/southwest over Kungshamn's visitors' basin. Hallö Lighthouse is in the background.



For The Boat: There is water, electricity (for an extra charge), diesel, and some chandlery available. Fisketången, the E part of town, is the home of Arcona Yachts and Kongshamn Marininredning, with a 65-ton travellift, a slipway, and a wide range of services.

For The Crew: All stores are available, with a grocery store on the dock, and a liquor store (Systembolaget) a 10-minute walk through town towards Fisketången, next to the library. Access to the facilities building is available for an extra charge.

Things To Do: There are many restaurants and bars. From the old part of town there is a path to the bathing area S of town. There is also a path to the hilltop with the large antennae and old sailing mark, from where good



views of Hållö Light and the S approaches can be had. It's worthwhile to walk to the old village at Fisketången with its beautiful old houses. There is a shuttle boat to Smögen.

Hunnebostrand

58°26.4'N, 11°17.6'E

Last Updated: 2020

[Google](#)

[Website](#)

[Website - harbour](#)

Hunnebostrand is a useful harbour N of the Soten Canal. It's quieter here than at **Smögen**, even though Hunnebostrand claims to be Sweden's third largest guest harbour.

Approaches: From the N, you can pass through narrow but clearly marked Tåresundet. If coming from the W, or if you find Tåresundet too intimidating, you can choose from a number of other marked approaches through the archipelago to Nordfjorden. From Nordfjorden, pass N of Göransö, leaving the mole to starboard.



Hunnebostrand looking northwest.

Anchorage, Moorings: Moor bow-to at one of the two pontoons using a buoy for a stern line, where provided, or setting an anchor from the stern.

For The Boat: Water, electricity and diesel are available. The boatyard in the SW basin will lift large boats, with most repair facilities available.

For The Crew: You will find groceries and a bakery 700 m up the road, beyond the pretty church.

Things To Do: There is a nice small restaurant on the docks in the old chapel (*bedehus*). You can follow the marked path, which starts on the E side of the hill past the shops, to the top of Södre Höge Berget.



Täresund

58°27.8' N, 11°17.4' E

Last Updated: 2020

[Google](#)

This pleasant anchorage N of the narrow Täresund offers good protection in all but strong W winds. As it can be approached from both N and S, it is a good choice if you for some reason need to reach an anchorage under sail.

S/V *Anna* anchored just north of Täresund, looking northeast.



© Hans Jakob Valderhaug

Approaches: From the N, pass E of two green buoys. From the S, pass through the narrow Täresund, leaving the two green buoys to port.

Anchorage, Moorings: There is a wide anchoring area in 2.5 to 4 m depth with a sand and mud bottom. There is some wash from passing boats. If this becomes troublesome, or strong winds from the SW are forecast, better protection may be found behind Långö, 1.5 nm NNE.

The surrounding archipelago is a popular summer destination and many of the islands have mooring bolts for landlines.

Things To Do: Visit the glacial potholes (giant's kettles) on Alvö, an island nature reserve W of the anchorage.



© Hans Jakob Valderhaug

The giants' kettles on Alvö, an island reserve near Täresund.

Dannemark to the Norwegian Border

The anchorage at Dannemark, looking east (next page).



© Hans Jakob Valderhaug



Dannemark (N)

58°30.8' N, 11°15.8' E

Last Updated: 2020

[Google](#)

This anchorage is S of the narrow but lovely passage through **Hamburgsund** and on the main passage N to S.

The islands Dannemark and Ulöen are both nature reserves.

Anchorage, Moorings: There are 3 SXX buoys in the anchorage but there is still plenty of room to anchor. Anchor in 2 to 4 m depth in mud with some rocks. It is reported that seaweed may cause problems with holding further out in the anchorage.

For The Boat: There is garbage disposal.

Things To Do: There are nice walks ashore and sand beaches.

Looking north over the docks, village and north approach to Hamburgsund (below).



Hamburgsund

58°33' N, 11°16.2' E

Last Updated: 2011

[Google](#)

[Website](#)

[Website- harbour](#)

Approaches: As charted. Keep a keen eye on the movements of the cable ferry and lower sails if crossing the path of the ferry (as is clearly signposted).

Anchorage, Moorings: It is possible to anchor in places in the S part of the sound, but shallows limit swinging room. There are visitors' berths just



Signpost on an isolated rock in the south approaches to Hamburgsund.

© Hans Jakob Valderhaug



S of the cable ferry, on both sides of the sound. Both are clearly marked with the standard blue “G” signs.

For The Boat: There is a boatyard with a crane. They will undertake mechanical repairs. Diesel, electricity and water are available, as is some chandlery.

For The Crew: Toilets are available on both sides of the sound, and a service building with the usual amenities on the mainland side. There are several shops in the village.

Things To Do: There are several restaurants. You can walk around the N part of Hamburgö—the two road systems are connected by a pleasant footpath (*Elefantstigen*/The Elephant Trail). The walk takes you past a beach on the W shore of the island, worth bringing swimming gear for. On a windy day a walk to the outlook post by the antenna structure on Hamburgö will provide views of the skerries, and an insight into why so many fishermen have lost their lives in these waters over the years.

Loshamn (SE Storö)

58°34.55' N, 11°04.15' E

Last Updated: 2014

[Google](#)

[Website](#)

Loshamn is located on Storö, one of the many offshore islands in the group called Väderöarna, and is surprisingly sheltered given its location; however, a first visit should be made in settled conditions and preferably outside the main holiday season. On calm summer days there will be boats moored throughout the island group.

Note that the Väderöarna islands are a nature reserve; landing restrictions are in effect April 1st to Aug 15th for many of the smaller islands, and the bay Sollidbågen, E of the harbour, is a no-anchoring zone. Loshamn and the area around the hostel and lookout are not part of the reserve.



Above: Graffiti at Väderöarna, the island group where Loshamn is located, dating to the early 1600s.

Sailboats tied to the docks in Strömsund, on the west side of Storö, northwest of Loshamn, looking northwest.



Approaches: This is easiest from the NE, passing between Storö and Ärholmen. The final part of the approach is aided by two sets of leading marks (white blobs painted on the rock). The first set holds you to the W

Sailboats on the wharfs at Loshamn on Storö in the island group Väderöarna, looking southwest.

to keep you S of a shallow spot and the second set takes you on a Nly heading through the narrow mole opening. The rocks that you have now cleared are usually also marked by private markers, so this is not as difficult as it sounds. If approaching from the SW be aware of the charted 1 m rock between Stångholmen and Ramnö.



Use With Caution

Anchorage, Moorings: Moor alongside the well-padded wood docks on the W side of the harbour. There is limited room for manoeuvring once inside the moles.

Alternatively, boats with drafts of < 2 m can moor alongside docks in Strömsund, on the W side of Storö. No berthing fees are charged at this location.

For The Crew: There are toilets and garbage disposal.

Things To Do: The small hostel and restaurant is open throughout the year. Borrow the key at the bar and walk to the old pilot lookout for excellent views of the islands and Skagerrak.





Gluppö (E)

58°34.9' N, 11°12.9' E

Last Updated: 2011

[Google](#)

This is a popular anchorage in the skerries W of Fjällbacka.

Note that the islands immediately S of Gluppö, W and S of Getryggen, are now designated a peaceful anchorage (*Hänsynsområden*); special regulations apply to engine use and the handling of garbage, etc.



Boats anchored at Gluppö.

Approaches: Enter from the N. Apparently it is also possible to enter from the S but we have not attempted it.

Anchorage, Moorings: Anchor in mud to 10 to 14 m depth. There are numerous mooring bolts all around the basin. There is a 1 m shoal S in the basin marked by a private marker.

Fjällbacka

58°35.9' N, 11°16.7' E

Last Updated: 2020

[Google](#)

[Website](#)

[Website - harbour](#)

This pretty village with a large guest harbour is among the most popular on the Bohuslän coast and is rather busy in high season.

Anchorage, Moorings: There are two pontoons with buoys for stern lines, or moor alongside the wave breakers as indicated. The pontoons are somewhat exposed in strong winds from the W. Some of the berths may be pre-booked.

An alternative for larger boats may be a fingerberth at the Richters dock, N of the municipal moorings.

There are several anchorages near the village if it's too crowded for you here.

Yachts are invited to winter at the visitors' pontoons at a reasonable cost. Because the pontoons are somewhat exposed, it would be advisable to hire a local caretaker.



Knivsklyftan, 2 minutes' walk from the harbour at Fjällbacka.



For The Boat: There is water and electricity (for an extra charge) on the pontoons. Diesel is available. Charts are available at the bookshop at the top of the hill.



Looking north over the harbour at Fjällbacka.

For The Crew: There are toilets and showers and a supermarket.

Things To Do: You can walk through the crack in the rock overhanging the harbour (Knivsklyftan), from where there are steps up to Vetteberget for views of the town and the surrounding skerries. There are several restaurants and pubs if you are hungry and thirsty after your walk.

Camilla Läckberg's best-selling crime stories (available in English) are all set in Fjällbacka, so what better place could there be to indulge in her literary universe?

Musösälten

58°38.2' N, 11°14.3' E

Last Updated: 2003

[Google](#)

This is a well-protected anchorage between **Grebbestad**, a settlement 3 nm N of Musösälten, and **Fjällbacka**.

Approaches: Enter from the NE, keeping close to Björnåsen. Pass either side of the two small islands in the inlet. There is 2 m depth on either side of the islands though long sea grass on the bottom may confuse your echo sounder. Avoid the W entrance where there is less than 1 m of water.



Looking northeast over the anchorage at Musösälten.



Anchorage, Moorings: The SXX has 2 buoys in the lagoon. Anchor in 3 to 5 m depth, avoiding a couple of shallower areas in the W part of the bay. The bottom is soft mud.

Grebbestad

58°41' N, 11°15.3' E

Last Updated: 2007

[Google](#)

[Website](#)

Looking north into inner Grebbestad harbour.

This is a fishing village and popular tourist resort, which is rather boisterous in mid-summer with its many pubs and restaurants. The island archipelago W of the town is considered by many to be the most beautiful part of the Bohuslän *skärgård*.



Approaches: Approach from the SW with all hazards clearly marked, given that you are familiar with the Mk (*märke*) in Swedish charts: a white square with a black centre painted directly on the rock surface. If approaching after dark, use the Otterön sector light and the leading lights on Svinnäs and the mainland. A daytime approach is also possible from the S, passing between Rösholmen and the tourist development at Tanumsstrand.

Looking south/southwest over the approaches to Grebbestad harbour and the visitors' pontoons.



Anchorage, Moorings: There is a large guest harbour along the SE harbourfront where mooring buoys for stern lines are provided. From mid-summer and for the following 6 to 8 weeks you should select your mooring with special care: If you are moored directly in front of the pubs you must expect to be a part of the party. More peace and quiet will be found along the inside of the wave arrester and along the mole between Vadskär and the mainland. While you may be allowed to moor alongside the wave arrester, you are otherwise expected to moor Scandinavian style: bow-to the dock with an anchor from the stern.



For The Boat: Water, electricity (for an extra charge) and diesel are available. There is a chandlery. Grebbestad Båtförvaring has a travel lift and full marina facilities, including winter storage.

For information on leaving your boat here for the winter, see Boat Storage Facilities in the Appendix (Volume I).

For The Crew: There is good shopping in Grebbestad, including a liquor store.

Things To Do: There are pubs, restaurants, a nightclub and a beach S of the harbour.

You can walk the path to the hill behind the town for panoramic views of the *skärgård*, from **Hamburgsund** in the S to Väderöarna in the SW and the Koster islands to the NW.

Havstenssund

58°45' N, 11°10.7' E

Last Updated: 2014

[Google](#)

[Website](#)

Looking at the pontoon north in the harbour at Havstenssund.

Anchorage, Moorings: There are places for visiting boats alongside pontoons to the N and S in the harbour.



For The Boat: Diesel and water are available.

For The Crew: There are toilets, showers and a shop in the marina.

Things To Do: There is a seasonal *café*.



S/V Anna at anchor in Alevikkilen, looking west (next page).

© Hans Jakob Valderhaug



Alevikkilen

58°44.58' N, 11°12.7' E

Last Updated: 2014

[Google](#)

This is an all-weather anchorage a bit away from the main passageway.

Approaches: Approach from the N, passing between Havsten and the mainland, and then up the narrow fjord.

Anchorages, Moorings: Anchor in 5 m depth in the bay, before the (un-charted) submarine cable N in the bay. The bottom is mud with good holding. The marina at Sannäs on the E side of the fjord has visitors' berths.

Things To Do: It takes 45 minutes to walk to **Havstenssund**.



Kalvön (SW Kalvö)

58°45.95' N, 11°08.75' E

Last Updated: 2013

[Google](#)

This small old fishing harbour on the SW side of Kalvön is suitable in settled weather.

Approaches: Enter from the N. There is 3 m depth between the mole heads.



The old fishing harbour at Kalvön, looking southeast.

Anchorages, Moorings: Moor either side of the rough pier, Scandinavian style in season or alongside in the off-season. There is limited room to manoeuvre on the inside of the pier where it shallows rapidly. Pay in the honesty box.

It is also possible to anchor in the bay NW of the mole harbour, but there is limited swinging room due to private moorings.

For The Crew: There are basic toilet facilities ashore.



Kalvön/Lindön

58°46.6' N, 11°09.2' E

Last Updated: 2013

[Google](#)

This is a peaceful well-protected anchorage inside the nature reserve of Trossö/Kalvön/Lindön, close to **Havstenssund** and the main inshore N to S passageway. A dirt road, built as relief work during the 1930s, connects the three islands. There were plans to connect the islands to the mainland with a bridge at Havstenssund but this never materialized and there have been no permanent residents since 1967.

Approaches: The approach is straightforward from the S. Note the shallows between Killingen and Långnäs, which makes approach from that direction impractical.



Looking north/northeast over the anchorage at Kalvön/Lindön.

© Hans Jakob Valderhaug

Anchorage, Moorings: The holding is good in a bottom of mud with sand/shells. There are several SXX buoys but still plenty of room to swing at anchor.

Things To Do: The 'road' makes for a lovely walk, with interesting vegetation and bird-life. The grazing cattle of the Scottish Highland breed may look scary but are apparently very friendly.

Koster Islands

The Koster Islands are a popular holiday resort—as there are almost no cars it is a paradise for hikers and cyclists. Parts of the archipelago became Kosterhavet National Park in 2009. Most of Syd-Koster and parts of Nord-Koster remain outside the Park; however, most of the waters around Nord-Koster, including the sound between Nord- and Syd-Koster, is a no-anchoring zone.

The detailed charts from the private company Hydrographica, in scale 1:10,000, are available as paper charts and are also integrated into electronic charts from Navionics and BlueChart/Garmin. Charts from NV Verlag include charts at 1:20,000 for the same area.

The Koster Islands contain a multitude of small anchorages for the intrepid gunkholer as well as commercial harbours that cater to visiting boats—Brevik, **Kyrkosund** and Ekenäs on Syd-Koster; **Kostersundet** and Vetnet on Nord-Koster. Given the islands' popularity, the harbours tend to be crowded.



Koster Islands—Ramsö

58°50' N, 11°04' E

Last Updated: 2009

[Google](#)

[Website](#)

This is the S-most harbour in the Koster Islands. Though no longer in use as a fishing harbour, the old harbour and surrounding buildings are well preserved.

Note that the harbour is crowded with Norwegian boats at weekends and during summer weeks so you should plan for an early arrival if possible.

Approaches: Approach from the N through the mole entrance.

Anchorage, Moorings: The visitors' docks are a 90° turn to port after the taxi boat dock. There is limited room to manoeuvre. In the busy season anchor from the stern and moor bow-to; moor alongside out of season. There is 2.5 m depth alongside.

For The Crew: There are basic toilet facilities and water is available from a hand pump.



© Hans Jakob Valderhaug

Above: Restored fisherman's house at Ramsö.



© Hans Jakob Valderhaug

Ramsö harbour, looking northwest.

Things To Do: There are nice walks on the island with a beach on the N shore.

Koster Islands—Ursholmen

58°50.05' N, 10°59.6' E

Last Updated: 2013

[Google](#)

Although a popular cruising area, the skerries S and W of Syd-Koster do not offer many harbours for deep draft vessels. An exception is this harbour at Sweden's most Wly lighthouse. You will need the detailed 1:15,000 chart (Kosters Södra Skärgård), incorporated in most small craft portfolios and electronic chart packages. Few of the numerous submerged rocks are marked so a good depth sounder, flat water, and good visibility are also required!

Ursholmen is a nature reserve but access is allowed year-round. See the chart for bird and seal sanctuaries in the surrounding skerries.

Approaches: The final approach should be made from the NE, passing W of Inre Ursholmen. This is the most Ely possible passage and is visually



more apparent than the chart may suggest. There is more than 2.5 m depth in the narrow approach. The charted signpost on the E shore in the final approach was missing in 2013.

Anchorage, Moorings: Locals seem to prefer mooring with lines from the bow to Yttre Ursholmen and an anchor from the stern. This gives easy access to facilities on the main island but allows for some interesting manoeuvres should an E wind spring up during the night. Larger boats will prefer to moor E in the basin, alongside the rockface of Inre Ursholmen. There are mooring bolts ashore on both islands.

For The Boat: There is a fresh water pump on Yttre Ursholmen.



Ursholmen, in the skerries southwest of Syd-Koster, is Sweden's most westerly lighthouse. Looking west.

For The Crew: Garbage bins and basic toilet facilities are located on Yttre Ursholmen.

Things To Do: There is a small museum on Yttre Ursholmen; enquire at one of the houses about getting the key.

Koster Islands—Kyrkosund (SE Syd-Koster)

58°52.1' N, 11°03.5' E

Last Updated: 2020

[Google](#)

This is our favourite harbour in the Koster Islands as there is a bit more room than at the other harbours, and it feels more peaceful as there are no pubs and the express boat does not dock here.

Approaches: Approach from the E, passing close to the light on Lilla Brattskär, and then head towards the opening in the mole.



Anchorage, Moorings: You can tie alongside the docks on the island at the E end of the mole or alongside the pontoon extending from the middle of the mole. There are also new docks W in the harbour.



Looking south over the harbour and mole at Kyrkosund.

© Hans Jakob Valderhaug

For The Boat: Electricity and garbage disposal are available.

For The Crew: There are basic toilet facilities.

Things To Do: There is a small *café* just up the road and a beach. You can rent bicycles to tour the island or else do so on foot.

Out of Date
Use With Caution



© Hans Jakob Valderhaug

Although the plan for the new National Park forbids anchoring off any beach, it seems anchoring will be allowed outside the markings shown on this chart posted onshore at Kosterhamnen (next page).



Koster Islands—Kosterhamnen (E Syd-Koster)

58°52.9' N, 11°03.1' E

Last Updated: 2020

[Google](#)

Note that this lovely bay on the E coast of Syd-Koster is now part of Kosterhavet National Park, with part of the bay designated as a no anchoring zone and with anchoring on the same spot only allowed for 48 hours.

The boundaries of the no anchoring area are reflected on the latest official chart, and in the chartlet at the beginning of this section, though the park brochure given to boaters is rather vague about the boundaries. In practice, the no anchoring zone prohibits anchoring within about .2 nm of the beach.



Looking north over the anchorage and ferry terminal at Kosterhamnen.

Anchorage, Moorings: Anchor E of the buoys indicating the no-anchoring area of the National Park. The bottom is sand/mud and the anchorage is exposed to the E.

There are a multitude of other anchoring possibilities in the Koster Islands and there are visitors' berths at nearby **Korshamn (Ekenås)**.

Things To Do: There are nice walks ashore or it is possible to rent a bicycle.

Koster Islands—Korshamn (Ekenås, NE Syd-Koster)

58°53.65' N, 11°02.9' E

Last Updated: 2020

[Google](#)

This is a popular harbour E on Syd-Koster.



Looking south over the visitors' berths at Korshamn, Ekenås. It is peaceful here out of season.

Anchorage, Moorings: Visitors' berths are available alongside the dock just N of the ferry quay. Deep draft boats will prefer the outside or end of the dock. Shallow draft boats may moor alongside the inner face of the



dock. The fingerberths on the pontoon N of the dock are narrow and suitable for small boats only. Fingerberths for visitors may also be available at the pontoons N of the mole; however, these berths are exposed in N'lies.

For The Boat: Electricity is available. A black water pump is installed S of the docks.

For The Crew: There is a service building with toilets and showers. There is a small kiosk in the hotel and it is a half-hour walk to the shop in the centre of the island. There are regular express boats to **Strömstad**.

Things To Do: There is a hotel with a restaurant. Bicycles are available for rent. As there are no cars, Koster is a great place for hiking and cycling. Visit Naturum, the National Park visitors' centre.

Koster Islands—Kostersundet (Nord-Koster)

58°53.7' N, 11°00.9' E

Last Updated: 2013

[Google](#)

[Website - harbour](#)

This harbour is located on the N side of the sound between the two Koster islands. It is teeming with boats of all sizes in mid-summer, when you would be wise to arrive early in the day for a berth.

Approaches: You can approach from the N from open Kosterfjorden or from the S through the intricate Koster archipelago.



Looking south over the visitors' pontoon at Kostersundet.

Anchorage, Moorings: There are two pontoons for visiting boats on the N side of the sound, both E of the small unmanned cable ferry. Moor alongside or use the buoys on the S pontoon for a stern/bow line. There is no anchoring. Some berths can be pre-booked.

For The Boat: Electricity is available for an extra charge.

For The Crew: There is a shop and *café* open in the summer season. Out of season you can dinghy across to Syd-Koster for a grocery store that is open year-round. The express boat from **Strömstad** docks here and at **Ekenäs**.

Things To Do: Visit Ekenäs where there is a hotel with a bar and the naturum visitors' centre for the Kosterhavet National Park.



Koster Islands—Långevik (NW Syd-Koster)

58°53'N, 11°00.30' E

Last Updated: 2015

[Google](#)

Right: Anchorage at Långevik, looking southwest.

In winds from the N and E this is a good alternative to **Kosterhamnen** or the crowded docks in **Kostersundet**.

Approaches: While the anchorage can be



© Hans Jakob Valderhaug

approached from the S through the skerries, we find the easiest approach is from the N after passing W through Kostersundet. Once through the sound, head S, then SE, leaving the rocks and one small island (Teneskär) to port, before heading N into the bay.

Anchorage, Moorings: Anchor in 3 to 4 m depth in sand with good holding.



© Hans Jakob Valderhaug

Looking west towards the shipping lanes up the Oslofjord, from Valfjellet, the highest point on Syd-Koster.

Things To Do: It is a short walk to the farmshop and *café* **Kosters Trädgårdar** at Långegårde. From there you can hike to the top of Valfjäll (alt 50 m), the highest point on Syd-Koster.

Nycklebykilen (N Tjärnö)

58°53.3'N, 11°09.9' E

Last Updated: 2020

[Google](#)

While not the most scenic anchorage in this area, this bay provides excellent protection in anything except NWlies. The road following the E shore of the bay seems to carry little traffic at night.

Approaches: Approach from the W as charted, passing mussel farms (unlit). Passage from the E is hampered by a 14 m high bridge.

Anchorage, Moorings: Anchor in 5 to 10 m depth in excellent holding in mud. There are some private moorings and docks towards the bottom of the bay.



© Hans Jakob Valderhaug

Looking north over the anchorage at Nycklebykilen.



Strömstad

58°56.3' N, 11°09.8' E

Last Updated: 2020

[Google](#)

[Website](#)

[Website - harbour](#)

Looking southeast over
Strömstad inner harbour.

This is a first-rate harbour only 5 nm by sea from the Norwegian border and is a good place to clear Swedish Customs if coming from Norway. The town is a popular wateringhole for thirsty Norwegians.

Approaches: The entrance is now straightforward from the NW, passing between the old mole to port and the new mole to starboard. There is a conspicuous 6-sided clubhouse on the S mole.



© Hans Jakob Valderhaug

Anchorage, Moorings: Mooring for visiting boats is located inside the wave breaker or in the town centre. Places inside the wave breaker are exposed to winds from the SW but are less noisy than mooring in the town centre. There are now fingerberths in the town centre, somewhat reducing the need for rafting.

Note that the N harbour is for commercial vessels only.

Places for visiting boats may also be found at the marina at Lökholmen, .5 nm NW of the town harbour; at Strömstad Marina in Kecalviken, or at Strömstad Spa and Resort Yachthamn.

Looking northwest over
the marinas in Kecalviken,
Strömstad.



© Hans Jakob Valderhaug

Alternatively, in settled weather you can anchor .6 nm W of the harbour, in 6 to 10 m depth, between Nötholmen and Killingholmen, and



dinghy into the city. It is important to stay well to the W, as it gets very shallow, very quickly, if you continue E into the passage.

For The Boat: There is water on the dock and diesel is available.

For information on leaving your boat here for the winter, see Boat Storage Facilities in the Appendix (Volume I).

For The Crew: Toilets and showers are located near the docks and there is good shopping in the town. Swedish Customs is open when ferries to and from Norway arrive and depart. There are bus connections N to **Oslo**, train connections S along the Bohuslän coast, and ferry service to **Sandefjord**.



Syd Hällsö/Bölskären

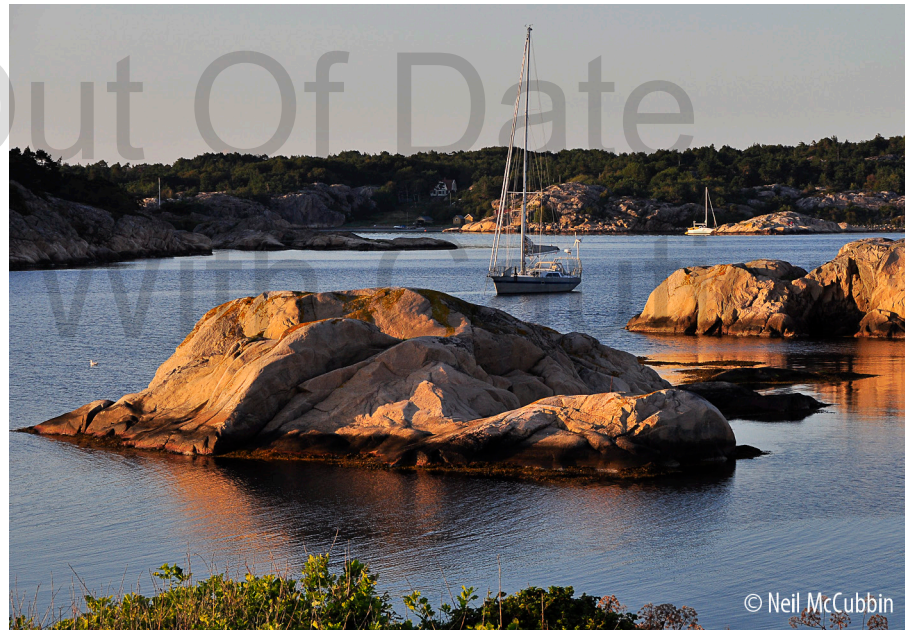
58°56.95' N, 11°05.5' E

Last Updated: 2011

[Google](#)

Located less than 2 nm from the border, this anchorage is the next best thing to being in Norway! No facilities.

Anchorage, Moorings: There is room to swing at anchor here, though locals prefer to tie to the rocks. This anchorage provides fairly good shelter in good holding.



Sailboats anchored at Syd Hällsö.